

Datasheet for ABIN7265744

**anti-ABCG1 antibody**[Go to Product page](#)**1** Image

## Overview

Quantity:	100 µL
Target:	ABCG1
Reactivity:	Human
Host:	Rabbit
Clonality:	Monoclonal
Conjugate:	This ABCG1 antibody is un-conjugated
Application:	Western Blotting (WB)

## Product Details

Purpose:	ABCG1 Rabbit mAb
Immunogen:	A synthesized peptide derived from human ABCG1
Isotype:	IgG
Cross-Reactivity:	Human, Mouse, Rat
Characteristics:	Monoclonal Antibodies
Purification:	Affinity purification

## Target Details

Target:	ABCG1
Alternative Name:	ABCG1 ( <a href="#">ABCG1 Products</a> )
Background:	The protein encoded by this gene is a member of the superfamily of ATP-binding cassette

## Target Details

(ABC) transporters. ABC proteins transport various molecules across extra- and intra-cellular membranes. ABC genes are divided into seven distinct subfamilies (ABC1, MDR/TAP, MRP, ALD, OABP, GCN20, White). This protein is a member of the White subfamily. It is involved in macrophage cholesterol and phospholipids transport, and may regulate cellular lipid homeostasis in other cell types. Six alternative splice variants have been identified. [provided by RefSeq, Jul 2008],ABC8,WHITE1,ABCG1,Cancer,Cardiovascular,Cell Type Marker,Cell Type Marker\_Astrocyte marker,Endocrine & Metabolism,Lipid Metabolism,Lipid Metabolism\_Cholesterol Metabolism,Lipids,Lipids\_Lipoproteins/Apolipoproteins,Neurodegenerative Diseases Markers,Neurodegenerative Diseases\_Amyloid Plaque and Neurofibrillary Tangle Formation in Alzheimers Disease,Neuroscience,Signal Transduction,ABCG1

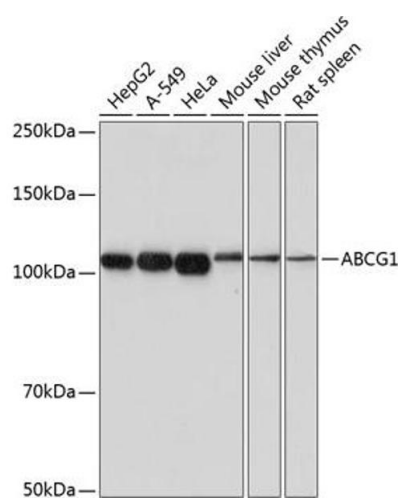
Molecular Weight:	110kDa
Gene ID:	9619
UniProt:	<a href="#">P45844</a>
Pathways:	<a href="#">Lipid Metabolism</a>

## Application Details

Application Notes:	WB,1:500 - 1:2000
Restrictions:	For Research Use only

## Handling

Format:	Liquid
Buffer:	PBS with 0.02 % sodium azide,0.05 % BSA,50 % glycerol, pH 7.3.
Preservative:	Sodium azide
Precaution of Use:	This product contains Sodium azide: a POISONOUS AND HAZARDOUS SUBSTANCE which should be handled by trained staff only.
Storage:	-20 °C
Storage Comment:	Store at -20°C. Avoid freeze / thaw cycles.



Western Blotting

**Image 1.** Western blot analysis of extracts of various cell lines, using antibody (ABIN7265744) at 1:1000 dilution. Secondary antibody: HRP Goat Anti-Rabbit IgG (H+L) (ABIN1684268 and ABIN3020597) at 1:10000 dilution. Lysates/proteins: 25 µg per lane. Blocking buffer: 3 % nonfat dry milk in TBST. Detection: ECL Basic Kit (RM00020). Exposure time: 90s.