

Datasheet for ABIN7265749

anti-ATAD2 antibody[Go to Product page](#)**1** Image

Overview

| | |
|--------------|--------------------------------------|
| Quantity: | 100 µL |
| Target: | ATAD2 |
| Reactivity: | Human |
| Host: | Rabbit |
| Clonality: | Monoclonal |
| Conjugate: | This ATAD2 antibody is un-conjugated |
| Application: | Western Blotting (WB) |

Product Details

| | |
|-------------------|--|
| Purpose: | ATAD2 Rabbit mAb |
| Immunogen: | A synthesized peptide derived from human ATAD2 |
| Isotype: | IgG |
| Cross-Reactivity: | Human |
| Characteristics: | Monoclonal Antibodies |
| Purification: | Affinity purification |

Target Details

| | |
|-------------------|--|
| Target: | ATAD2 |
| Alternative Name: | ATAD2 (ATAD2 Products) |
| Background: | A large family of ATPases has been described, whose key feature is that they share a |

Target Details

conserved region of about 220 amino acids that contains an ATP-binding site. The proteins that belong to this family either contain one or two AAA (ATPases Associated with diverse cellular Activities) domains. AAA family proteins often perform chaperone-like functions that assist in the assembly, operation, or disassembly of protein complexes. The protein encoded by this gene contains two AAA domains, as well as a bromodomain. [provided by RefSeq, Jul 2008],ANCCA, CT137, PRO2000,Cancer,Endocrine & Metabolism,Epigenetics & Nuclear Signaling,Nuclear Receptor Signaling,Nuclear Receptor Signaling_Nuclear hormone receptors,Signal Transduction,ATAD2

Molecular Weight: 180kDa

Gene ID: 29028

UniProt: [Q6PL18](#)

Application Details

Application Notes: WB,1:500 - 1:2000

Restrictions: For Research Use only

Handling

Format: Liquid

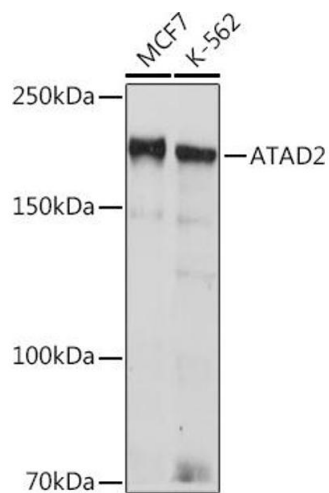
Buffer: PBS with 0.02 % sodium azide,0.05 % BSA,50 % glycerol, pH 7.3.

Preservative: Sodium azide

Precaution of Use: This product contains Sodium azide: a POISONOUS AND HAZARDOUS SUBSTANCE which should be handled by trained staff only.

Storage: -20 °C

Storage Comment: Store at -20°C. Avoid freeze / thaw cycles.



Western Blotting

Image 1. Western blot analysis of extracts of various cell lines, using Rabbit mAb (ABIN7265749) at 1:1000 dilution. Secondary antibody: HRP Goat Anti-Rabbit IgG (H+L) (ABIN1684268 and ABIN3020597) at 1:10000 dilution. Lysates/proteins: 25 µg per lane. Blocking buffer: 3 % nonfat dry milk in TBST. Detection: ECL Basic Kit (RM00020). Exposure time: 90s.