

Datasheet for ABIN7265752
anti-ATP2A1/SERCA1 antibody

3 Images

[Go to Product page](#)

Overview

Quantity:	100 µL
Target:	ATP2A1/SERCA1 (ATP2A1)
Reactivity:	Human
Host:	Rabbit
Clonality:	Monoclonal
Conjugate:	This ATP2A1/SERCA1 antibody is un-conjugated
Application:	Western Blotting (WB), Immunofluorescence (IF)

Product Details

Purpose:	SERCA1/ATP2A1 Rabbit mAb
Immunogen:	A synthesized peptide derived from human SERCA1/ATP2A1
Isotype:	IgG
Cross-Reactivity:	Human, Mouse, Rat
Characteristics:	Monoclonal Antibodies
Purification:	Affinity purification

Target Details

Target:	ATP2A1/SERCA1 (ATP2A1)
Alternative Name:	ATP2A1 (ATP2A1 Products)
Background:	This gene encodes one of the SERCA Ca(2+)-ATPases, which are intracellular pumps located in

Target Details

the sarcoplasmic or endoplasmic reticula of muscle cells. This enzyme catalyzes the hydrolysis of ATP coupled with the translocation of calcium from the cytosol to the sarcoplasmic reticulum lumen, and is involved in muscular excitation and contraction. Mutations in this gene cause some autosomal recessive forms of Brody disease, characterized by increasing impairment of muscular relaxation during exercise. Alternative splicing results in three transcript variants encoding different isoforms. [provided by RefSeq, Oct 2013],ATP2A, SERCA1,Calcium Signaling,Cancer,Cardiovascular,Cardiovascular diseases,Cardiovascular diseases_Heart disease,Cardiovascular diseases_Hypertension,Endocrine & Metabolism,Heart,Neurodegenerative Diseases,Neuroscience,Signal Transduction,ATP2A1

Molecular Weight: 110kDa

Gene ID: 487

UniProt: [O14983](#)

Pathways: [Ribonucleoside Biosynthetic Process](#)

Application Details

Application Notes: WB,1:500 - 1:2000,IF,1:50 - 1:200

Restrictions: For Research Use only

Handling

Format: Liquid

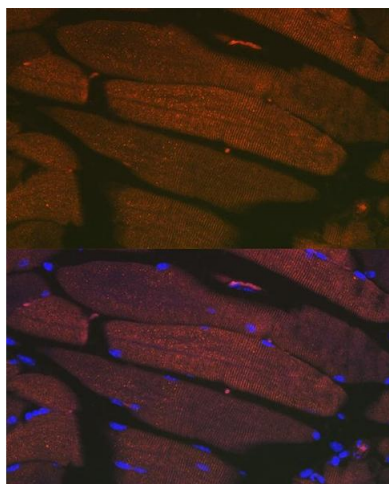
Buffer: PBS with 0.02 % sodium azide,0.05 % BSA,50 % glycerol, pH 7.3.

Preservative: Sodium azide

Precaution of Use: This product contains Sodium azide: a POISONOUS AND HAZARDOUS SUBSTANCE which should be handled by trained staff only.

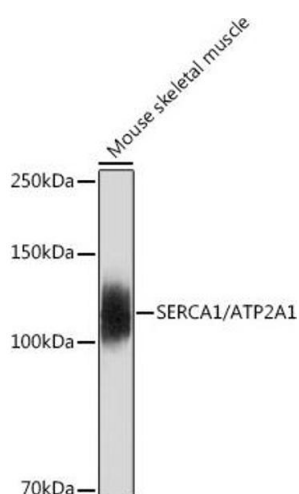
Storage: -20 °C

Storage Comment: Store at -20°C. Avoid freeze / thaw cycles.



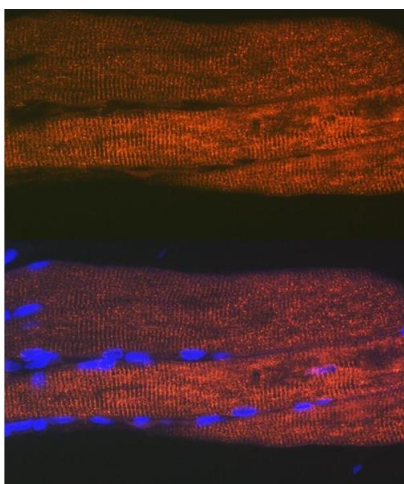
Immunofluorescence

Image 1. Immunofluorescence analysis of mouse bone marrow cells using SERC/ Rabbit mAb (9639) at dilution of 1:100 (40x lens). Blue: DAPI for nuclear staining.



Western Blotting

Image 2. Western blot analysis of extracts of Mouse skeletal muscle, using SERC/ Rabbit mAb (9639) at 1:500 dilution. Secondary antibody: HRP Goat Anti-Rabbit IgG (H+L) (ABIN1684268 and ABIN3020597) at 1:10000 dilution. Lysates/proteins: 25 µg per lane. Blocking buffer: 3 % nonfat dry milk in TBST. Detection: ECL Basic Kit (RM00020). Exposure time: 30s.



Immunofluorescence

Image 3. Immunofluorescence analysis of rat bone marrow cells using SERC/ Rabbit mAb (9639) at dilution of 1:100 (40x lens). Blue: DAPI for nuclear staining.