

Datasheet for ABIN7265763
anti-ATP6V1B2 antibody (AA 262-511)[Go to Product page](#)

1 Image

Overview

Quantity:	100 µL
Target:	ATP6V1B2
Binding Specificity:	AA 262-511
Reactivity:	Human
Host:	Rabbit
Clonality:	Polyclonal
Conjugate:	This ATP6V1B2 antibody is un-conjugated
Application:	Western Blotting (WB)

Product Details

Purpose:	ATP6V1B2 Rabbit pAb
Immunogen:	Recombinant fusion protein containing a sequence corresponding to amino acids 262-511 of human ATP6V1B2 (NP_001684.2).
Sequence:	NLANDPTIER IITPRLALTT AEFLAYQCEK HVLVILTDMS SYAEALREVS AAREEVPGRR GFPGYMYTDL ATIYERAGRV EGRNGSITQI PILTMPNDDI THPIPDLTGY ITEGQIYVDR QLHNRQIYPP INVLPSSLRL MKSAIGEGMT RKDHADVSNQ LYACYAIGKD VQAMKAVVGE EALTSDDLLY LEFLQKFERN FIAQGPYENR TVFETLDIGW QLLRIFPKEM LKRIPQSTLS EFYPRDSAKH
Isotype:	IgG
Cross-Reactivity:	Human, Mouse, Rat
Characteristics:	Polyclonal Antibodies

Product Details

Purification: Affinity purification

Target Details

Target: ATP6V1B2

Alternative Name: ATP6V1B2 ([ATP6V1B2 Products](#))

Background: This gene encodes a component of vacuolar ATPase (V-ATPase), a multisubunit enzyme that mediates acidification of eukaryotic intracellular organelles. V-ATPase dependent organelle acidification is necessary for such intracellular processes as protein sorting, zymogen activation, receptor-mediated endocytosis, and synaptic vesicle proton gradient generation. V-ATPase is composed of a cytosolic V1 domain and a transmembrane V0 domain. The V1 domain consists of three A, three B, and two G subunits, as well as a C, D, E, F, and H subunit. The V1 domain contains the ATP catalytic site. The protein encoded by this gene is one of two V1 domain B subunit isoforms and is the only B isoform highly expressed in osteoclasts.,ATP6V1B2,ATP6B1B2,ATP6B2,DOOD,H057,VATB,VPP3,Vma2,ZLS2,Cancer,Signal Transduction,Endocrine & Metabolism,Mitochondrial metabolism,Mitochondrial markers,Neuroscience,ATP6V1B2

Molecular Weight: 56kDa

Gene ID: 526

UniProt: [P21281](#)

Pathways: [Transition Metal Ion Homeostasis](#), [Proton Transport](#)

Application Details

Application Notes: WB,1:500 - 1:2000

Restrictions: For Research Use only

Handling

Format: Liquid

Buffer: PBS with 0.02 % sodium azide,50 % glycerol, pH 7.3.

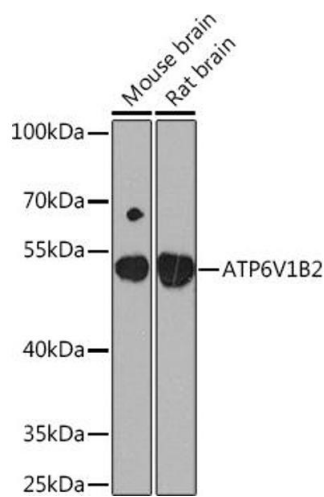
Preservative: Sodium azide

Precaution of Use: This product contains Sodium azide: a POISONOUS AND HAZARDOUS SUBSTANCE which should be handled by trained staff only.

Handling

Storage:	-20 °C
Storage Comment:	Store at -20°C. Avoid freeze / thaw cycles.

Images



Western Blotting

Image 1. Western blot analysis of extracts of various cell lines, using V1B2 Rabbit pAb at 1:1000 dilution. Secondary antibody: HRP Goat Anti-Rabbit IgG (H+L) (ABIN1684268 and ABIN3020597) at 1:10000 dilution. Lysates/proteins: 25 µg per lane. Blocking buffer: 3 % nonfat dry milk in TBST. Detection: ECL Basic Kit (RM00020). Exposure time: 90s.