



Datasheet for ABIN7265768  
**anti-ATP12A antibody (AA 890-980)**



[Go to Product page](#)

1 Image

Overview

Quantity:	100 µL
Target:	ATP12A
Binding Specificity:	AA 890-980
Reactivity:	Human
Host:	Rabbit
Clonality:	Polyclonal
Conjugate:	This ATP12A antibody is un-conjugated
Application:	Western Blotting (WB)

Product Details

Purpose:	ATP12A Rabbit pAb
Immunogen:	Recombinant fusion protein containing a sequence corresponding to amino acids 890-980 of human ATP12A (NP_001172014.1).
Sequence:	YFTVYAQEGF LPRTLINLRV EWEKDYVNDL KDSYQEWTR YQREYLEWTG YTAFFVGILV QQIADLIIRK TRRNSIFQQG LFRNKVIWVG I
Isotype:	IgG
Cross-Reactivity:	Human
Characteristics:	Polyclonal Antibodies
Purification:	Affinity purification

## Target Details

---

Target:	ATP12A
Alternative Name:	ATP12A ( <a href="#">ATP12A Products</a> )
Background:	<p>The protein encoded by this gene belongs to the family of P-type cation transport ATPases. This gene encodes a catalytic subunit of the ouabain-sensitive H<sup>+</sup>/K<sup>+</sup> -ATPase that catalyzes the hydrolysis of ATP coupled with the exchange of H(+) and K(+) ions across the plasma membrane. It is also responsible for potassium absorption in various tissues. Two transcript variants encoding different isoforms have been found for this gene.,ATP12A,ATP1AL1,HK,Cancer,Signal Transduction,Endocrine &amp; Metabolism,ATP12A</p>
Molecular Weight:	115kDa/116kDa
Gene ID:	479
UniProt:	<a href="#">P54707</a>
Pathways:	<a href="#">Proton Transport</a> , <a href="#">Ribonucleoside Biosynthetic Process</a>

## Application Details

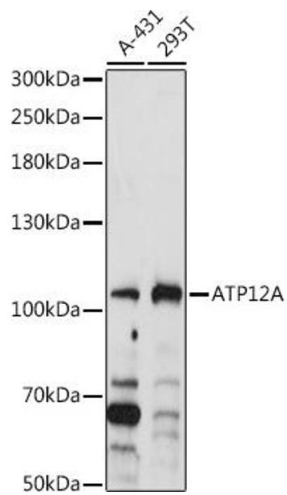
---

Application Notes:	WB,1:500 - 1:2000
Restrictions:	For Research Use only

## Handling

---

Format:	Liquid
Buffer:	PBS with 0.02 % sodium azide,50 % glycerol, pH 7.3.
Preservative:	Sodium azide
Precaution of Use:	This product contains Sodium azide: a POISONOUS AND HAZARDOUS SUBSTANCE which should be handled by trained staff only.
Storage:	-20 °C
Storage Comment:	Store at -20°C. Avoid freeze / thaw cycles.



### Western Blotting

**Image 1.** Western blot analysis of extracts of various cell lines, using A antibody (ABIN7265768) at 1:1000 dilution. Secondary antibody: HRP Goat Anti-Rabbit IgG (H+L) (ABIN1684268 and ABIN3020597) at 1:10000 dilution. Lysates/proteins: 25 µg per lane. Blocking buffer: 3 % nonfat dry milk in TBST. Detection: ECL Basic Kit (RM00020). Exposure time: 5s.