

Datasheet for ABIN7265772
anti-ATP1B1 antibody



[Go to Product page](#)

4 Images

Overview

Quantity:	100 µL
Target:	ATP1B1
Reactivity:	Human
Host:	Rabbit
Clonality:	Monoclonal
Conjugate:	This ATP1B1 antibody is un-conjugated
Application:	Western Blotting (WB), Immunohistochemistry (IHC)

Product Details

Purpose:	ATP1B1 Rabbit mAb
Immunogen:	A synthesized peptide derived from human ATP1B1
Isotype:	IgG
Cross-Reactivity:	Human, Mouse, Rat
Characteristics:	Monoclonal Antibodies
Purification:	Affinity purification

Target Details

Target:	ATP1B1
Alternative Name:	ATP1B1 (ATP1B1 Products)
Background:	The protein encoded by this gene belongs to the family of Na ⁺ /K ⁺ and H ⁺ /K ⁺ ATPases beta

Target Details

chain proteins, and to the subfamily of Na⁺/K⁺ -ATPases. Na⁺/K⁺ -ATPase is an integral membrane protein responsible for establishing and maintaining the electrochemical gradients of Na and K ions across the plasma membrane. These gradients are essential for osmoregulation, for sodium-coupled transport of a variety of organic and inorganic molecules, and for electrical excitability of nerve and muscle. This enzyme is composed of two subunits, a large catalytic subunit (alpha) and a smaller glycoprotein subunit (beta). The beta subunit regulates, through assembly of alpha/beta heterodimers, the number of sodium pumps transported to the plasma membrane. The glycoprotein subunit of Na⁺/K⁺ -ATPase is encoded by multiple genes. This gene encodes a beta 1 subunit. Alternatively spliced transcript variants encoding different isoforms have been described, but their biological validity is not known. [provided by RefSeq, Mar 2010],ATP1B,Calcium Signaling,Cancer,Endocrine & Metabolism,Neuroscience,Signal Transduction,ATP1B1

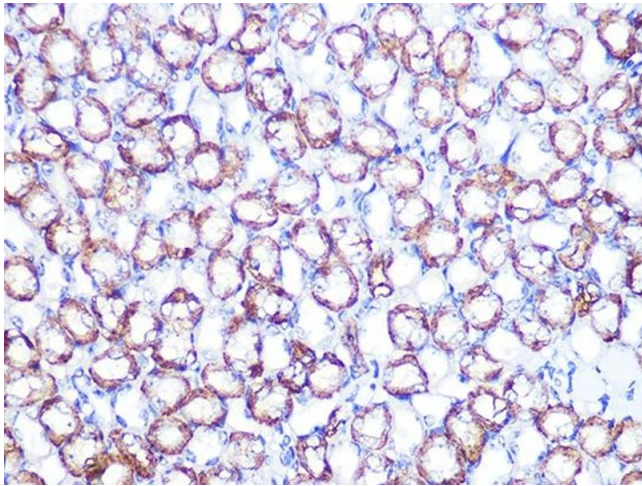
Molecular Weight:	40-50kDa
Gene ID:	481
UniProt:	P05026
Pathways:	Thyroid Hormone Synthesis , Ribonucleoside Biosynthetic Process , SARS-CoV-2 Protein Interactome

Application Details

Application Notes:	WB,1:500 - 1:2000,IHC,1:50 - 1:200
Restrictions:	For Research Use only

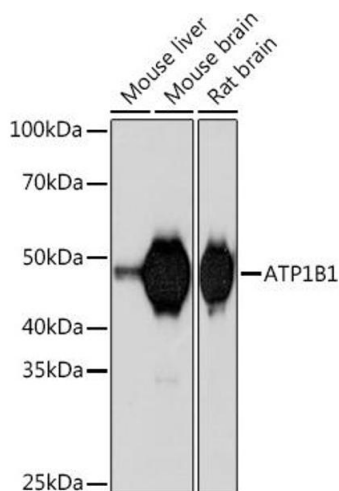
Handling

Format:	Liquid
Buffer:	PBS with 0.02 % sodium azide,0.05 % BSA,50 % glycerol, pH 7.3.
Preservative:	Sodium azide
Precaution of Use:	This product contains Sodium azide: a POISONOUS AND HAZARDOUS SUBSTANCE which should be handled by trained staff only.
Storage:	-20 °C
Storage Comment:	Store at -20°C. Avoid freeze / thaw cycles.



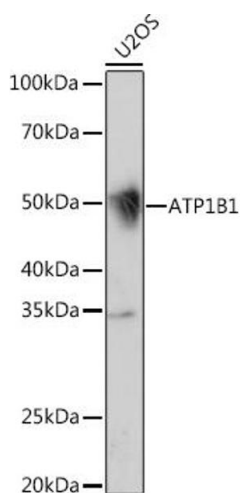
Immunohistochemistry

Image 1. Immunohistochemistry of paraffin-embedded mouse kidney using B1 Rabbit mAb (ABIN7265772) at dilution of 1:100 (40x lens). Perform microwave antigen retrieval with 10 mM PBS buffer pH 7.2 before commencing with IHC staining protocol.



Western Blotting

Image 2. Western blot analysis of extracts of various cell lines, using B1 Rabbit mAb (ABIN7265772) at 1:1000 dilution. Secondary antibody: HRP Goat Anti-Rabbit IgG (H+L) (ABIN1684268 and ABIN3020597) at 1:10000 dilution. Lysates/proteins: 25 µg per lane. Blocking buffer: 3 % nonfat dry milk in TBST. Detection: ECL Basic Kit (RM00020). Exposure time: 90s.



Western Blotting

Image 3. Western blot analysis of extracts of U2OS cells, using B1 Rabbit mAb (ABIN7265772) at 1:1000 dilution. Secondary antibody: HRP Goat Anti-Rabbit IgG (H+L) (ABIN1684268 and ABIN3020597) at 1:10000 dilution. Lysates/proteins: 25 µg per lane. Blocking buffer: 3 % nonfat dry milk in TBST. Detection: ECL Enhanced Kit (RM00021). Exposure time: 30s.

Please check the [product details page](#) for more images. Overall 4 images are available for ABIN7265772.