



Datasheet for ABIN7265777
anti-ATR antibody (pThr1989)



[Go to Product page](#)

4 Images

Overview

Quantity:	100 µL
Target:	ATR
Binding Specificity:	pThr1989
Reactivity:	Human
Host:	Rabbit
Clonality:	Polyclonal
Conjugate:	This ATR antibody is un-conjugated
Application:	Western Blotting (WB), Immunohistochemistry (IHC)

Product Details

Purpose:	Phospho-ATR-T1989 Rabbit pAb
Immunogen:	A phospho synthetic peptide corresponding to residues surrounding T1989 of Human ATR.
Isotype:	IgG
Cross-Reactivity:	Human, Mouse, Rat
Characteristics:	Phosphorylated Antibodies
Purification:	Affinity purification

Target Details

Target:	ATR
Alternative Name:	ATR (ATR Products)

Target Details

Background: The protein encoded by this gene belongs to the PI3/PI4-kinase family, and is most closely related to ATM, a protein kinase encoded by the gene mutated in ataxia telangiectasia. This protein and ATM share similarity with *Schizosaccharomyces pombe rad3*, a cell cycle checkpoint gene required for cell cycle arrest and DNA damage repair in response to DNA damage. This kinase has been shown to phosphorylate checkpoint kinase CHK1, checkpoint proteins RAD17, and RAD9, as well as tumor suppressor protein BRCA1. Mutations of this gene are associated with Seckel syndrome. An alternatively spliced transcript variant of this gene has been reported, however, its full length nature is not known. Transcript variants utilizing alternative polyA sites exist.,ATR,FCTCS,FRP1,MEC1,SCKL,SCKL1,Epigenetics & Nuclear Signaling,Chromatin Modifying Enzymes,Phosphorylation,DNA Damage & Repair,Cancer,Tumor suppressors,Signal Transduction,Kinase,Serine/threonine kinases,Cell Biology & Developmental Biology,Apoptosis,Mitochondrial Control of Apoptosis,Cell Cycle,G1/S Checkpoint,G2/M DNA Damage Checkpoint,Protein phosphorylation,ATR

Molecular Weight: 294kDa/297kDa/301kDa

Gene ID: 545

UniProt: [Q13535](#)

Pathways: [Positive Regulation of Response to DNA Damage Stimulus](#)

Application Details

Application Notes: WB,1:500 - 1:2000,IHC,1:50 - 1:200

Restrictions: For Research Use only

Handling

Format: Liquid

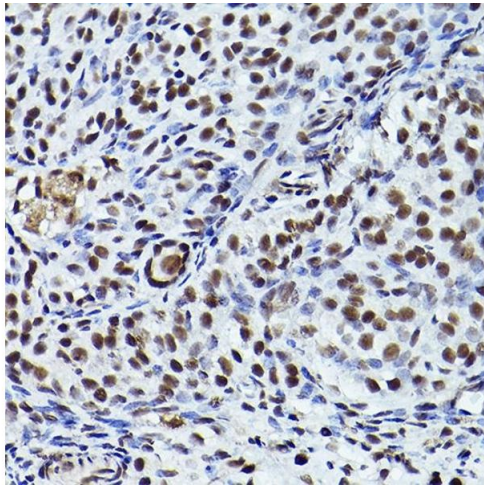
Buffer: PBS with 0.02 % sodium azide,50 % glycerol, pH 7.3.

Preservative: Sodium azide

Precaution of Use: This product contains Sodium azide: a POISONOUS AND HAZARDOUS SUBSTANCE which should be handled by trained staff only.

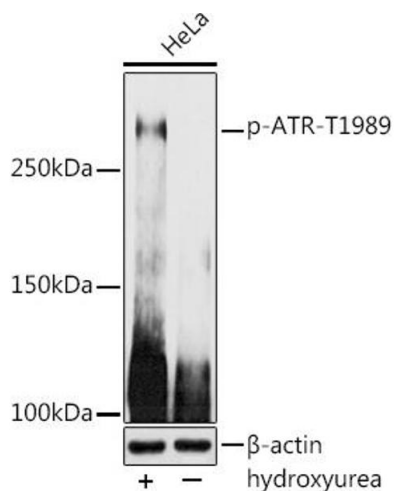
Storage: -20 °C

Storage Comment: Store at -20°C. Avoid freeze / thaw cycles.



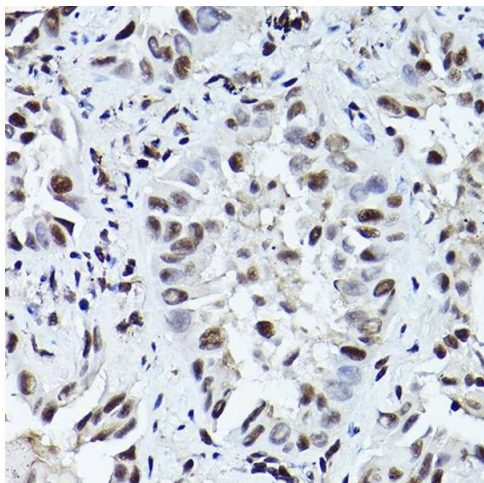
Immunohistochemistry

Image 1. Immunohistochemistry of paraffin-embedded rat ovary using Phospho-ATR-T1989 Rabbit pAb (ABIN7265777) at dilution of 1:200 (40x lens). Perform high pressure antigen retrieval with 10 mM citrate buffer pH 6.0 before commencing with IHC staining protocol.



Western Blotting

Image 2. Western blot analysis of extracts of HeLa cells, using Phospho-ATR-T1989 antibody (ABIN7265777) at 1:1000 dilution. HeLa cells were treated by Hydroxyurea (4 mM) at 37 °C for 20 hours. Secondary antibody: HRP Goat Anti-Rabbit IgG (H+L) (ABIN1684268 and ABIN3020597) at 1:10000 dilution. Lysates/proteins: 25 μ g per lane. Blocking buffer: 3 % nonfat dry milk in TBST. Detection: ECL Basic Kit (RM00020). Exposure time: 180s.



Immunohistochemistry

Image 3. Immunohistochemistry of paraffin-embedded human lung cancer using Phospho-ATR-T1989 Rabbit pAb (ABIN7265777) at dilution of 1:200 (40x lens). Perform high pressure antigen retrieval with 10 mM citrate buffer pH 6.0 before commencing with IHC staining protocol.

Please check the [product details page](#) for more images. Overall 4 images are available for ABIN7265777.