



Datasheet for ABIN7265788

anti-ATG12 antibody



[Go to Product page](#)

3 Images

Overview

Quantity:	100 µL
Target:	ATG12
Reactivity:	Human
Host:	Rabbit
Clonality:	Monoclonal
Conjugate:	This ATG12 antibody is un-conjugated
Application:	Western Blotting (WB), Immunohistochemistry (IHC), Immunoprecipitation (IP)

Product Details

Purpose:	ATG12 Rabbit mAb
Immunogen:	A synthesized peptide derived from human Apg12.
Isotype:	IgG
Cross-Reactivity:	Human, Mouse, Rat
Characteristics:	Monoclonal Antibodies
Purification:	Affinity purification

Target Details

Target:	ATG12
Alternative Name:	ATG12 (ATG12 Products)
Name:	

Target Details

Background: Autophagy is a process of bulk protein degradation in which cytoplasmic components, including organelles, are enclosed in double-membrane structures called autophagosomes and delivered to lysosomes or vacuoles for degradation. ATG12 is the human homolog of a yeast protein involved in autophagy (Mizushima et al., 1998 [PubMed 9852036]). [supplied by OMIM, Mar 2008], ATG12, APG12, APG12L, FBR93, HAPG12, Apg12, Apoptosis, Autophagy, Autophagy_ATGs, Cancer, Cardiovascular, Cell Biology & Developmental Biology, Endocrine & Metabolism, Heart, Immunology & Inflammation, Mitochondrial metabolism, Signal Transduction, Tumor suppressors, Ubiquitin, ATG12

Molecular Weight: 22,55kDa

Weight:

Gene ID: 9140

UniProt: [O94817](#)

Pathways: [Autophagy](#)

Application Details

Application Notes: WB, 1:500 - 1:2000, IHC, 1:50 - 1:200, IP, 1:50 - 1:200

Restrictions: For Research Use only

Handling

Format: Liquid

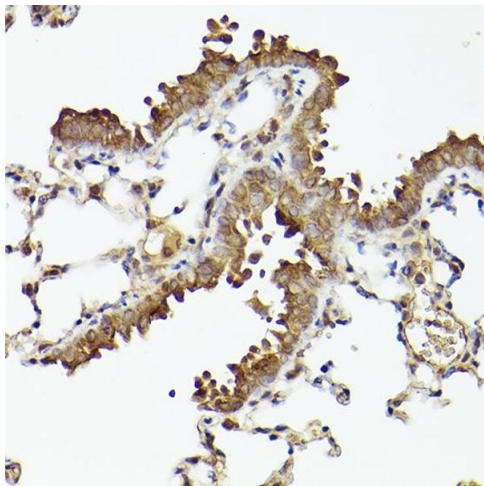
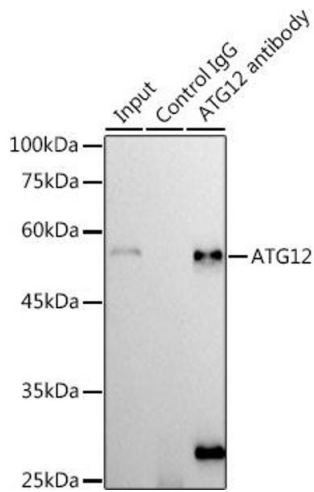
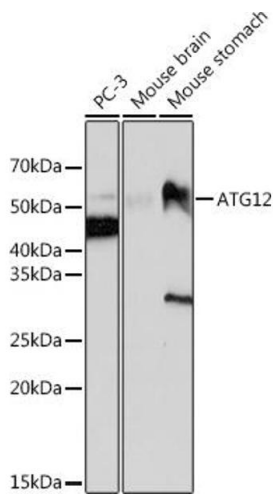
Buffer: PBS with 0.02 % sodium azide, 0.05 % BSA, 50 % glycerol, pH 7.3.

Preservative: Sodium azide

Precaution of Use: This product contains Sodium azide: a POISONOUS AND HAZARDOUS SUBSTANCE which should be handled by trained staff only.

Storage: -20 °C

Storage Comment: Store at -20°C. Avoid freeze / thaw cycles.



Western Blotting

Image 1. Western blot analysis of extracts of various cell lines, using antibody (ABIN7265788) at 1:1000 dilution. Secondary antibody: HRP Goat Anti-Rabbit IgG (H+L) (ABIN1684268 and ABIN3020597) at 1:10000 dilution. Lysates/proteins: 25 µg per lane. Blocking buffer: 3 % nonfat dry milk in TBST. Detection: ECL Basic Kit (RM00020). Exposure time: 3 min.

Immunoprecipitation

Image 2. Immunoprecipitation analysis of 300 µg extracts of 293T cells using 3 µg antibody (ABIN7265788). Western blot was performed from the immunoprecipitate using antibody (ABIN7265788) at a dilution of 1:500.

Immunohistochemistry

Image 3. Immunohistochemistry of paraffin-embedded mouse lung using Rabbit mAb (ABIN7265788) at dilution of 1:100 (40x lens). Perform high pressure antigen retrieval with 10 mM citrate buffer pH 6.0 before commencing with IHC staining protocol.