

Datasheet for ABIN7265806
anti-BCL11A antibody



[Go to Product page](#)

2 Images

Overview

Quantity:	100 µL
Target:	BCL11A
Reactivity:	Human
Host:	Rabbit
Clonality:	Monoclonal
Conjugate:	This BCL11A antibody is un-conjugated
Application:	Western Blotting (WB), Immunohistochemistry (IHC)

Product Details

Purpose:	CTIP1/BCL11A Rabbit mAb
Immunogen:	A synthesized peptide derived from human CTIP1/BCL11A
Isotype:	IgG
Cross-Reactivity:	Human, Mouse, Rat
Characteristics:	Monoclonal Antibodies
Purification:	Affinity purification

Target Details

Target:	BCL11A
Alternative Name:	BCL11A (BCL11A Products)
Background:	This gene encodes a C2H2 type zinc-finger protein by its similarity to the mouse Bcl11a/Evi9

Target Details

protein. The corresponding mouse gene is a common site of retroviral integration in myeloid leukemia, and may function as a leukemia disease gene, in part, through its interaction with BCL6. During hematopoietic cell differentiation, this gene is down-regulated. It is possibly involved in lymphoma pathogenesis since translocations associated with B-cell malignancies also deregulates its expression. Multiple transcript variants encoding several different isoforms have been found for this gene. [provided by RefSeq, Jul 2008],BCL11A-L, BCL11A-S, BCL11A-XL, BCL11a-M, CTIP1, DILOS, EVI9, HBFQTL5, ZNF856,Epigenetics & Nuclear Signaling,Neuroscience,Signal Transduction,Transcription Factors,BCL11A

Molecular Weight: 120kDa

Gene ID: 53335

UniProt: [Q9H165](#)

Pathways: [Regulation of Cell Size](#)

Application Details

Application Notes: WB,1:500 - 1:2000,IHC,1:50 - 1:200

Restrictions: For Research Use only

Handling

Format: Liquid

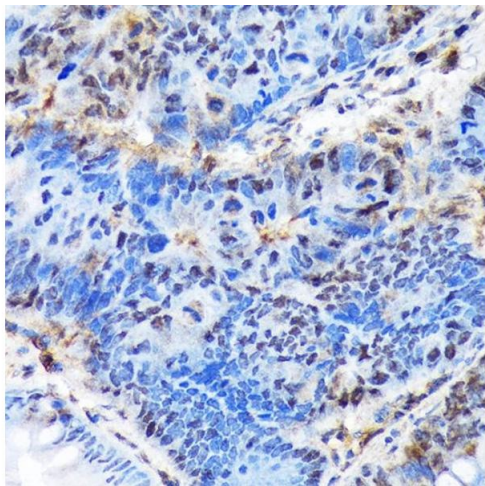
Buffer: PBS with 0.02 % sodium azide,0.05 % BSA,50 % glycerol, pH 7.3.

Preservative: Sodium azide

Precaution of Use: This product contains Sodium azide: a POISONOUS AND HAZARDOUS SUBSTANCE which should be handled by trained staff only.

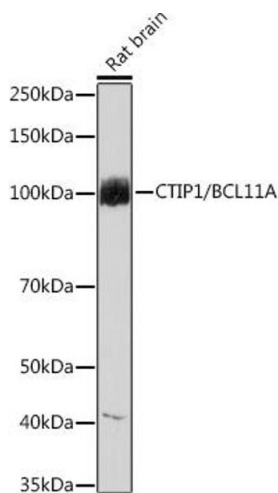
Storage: -20 °C

Storage Comment: Store at -20°C. Avoid freeze / thaw cycles.



Immunohistochemistry

Image 1. Immunohistochemistry of paraffin-embedded human colon carcinoma using CTIP1/BCL11A Rabbit mAb at dilution of 1:100 (40x lens). Perform microwave antigen retrieval with 10 mM Tris/EDTA buffer pH 9.0 before commencing with IHC staining protocol.



Western Blotting

Image 2. Western blot analysis of extracts of Rat brain, using CTIP1/BCL11A Rabbit mAb at 1:1000 dilution. Secondary antibody: HRP Goat Anti-Rabbit IgG (H+L) (ABIN1684268 and ABIN3020597) at 1:10000 dilution. Lysates/proteins: 25 µg per lane. Blocking buffer: 3 % nonfat dry milk in TBST. Detection: ECL Basic Kit (RM00020). Exposure time: 60s.