



[Go to Product page](#)

Datasheet for ABIN7265810

anti-Bcl-2 antibody

7 Images

Overview

Quantity:	100 µL
Target:	Bcl-2 (BCL2)
Reactivity:	Human
Host:	Rabbit
Clonality:	Monoclonal
Conjugate:	This Bcl-2 antibody is un-conjugated
Application:	Western Blotting (WB), Immunohistochemistry (IHC), Immunoprecipitation (IP)

Product Details

Purpose:	Bcl-2 Rabbit mAb
Immunogen:	A synthesized peptide derived from human Bcl-2.
Isotype:	IgG
Cross-Reactivity:	Human, Mouse, Rat
Characteristics:	Monoclonal Antibodies
Purification:	Affinity purification

Target Details

Target:	Bcl-2 (BCL2)
Alternative Name:	BCL2 (BCL2 Products)
Background:	This gene encodes an integral outer mitochondrial membrane protein that blocks the apoptotic

Target Details

death of some cells such as lymphocytes. Constitutive expression of BCL2, such as in the case of translocation of BCL2 to Ig heavy chain locus, is thought to be the cause of follicular lymphoma. Alternative splicing results in multiple transcript variants. [provided by RefSeq, Feb 2016],Bcl-2,PPP1R50,BCL2,Apoptosis,Apoptosis_Bcl 2 family,Apoptosis_Inhibition of Apoptosis,Apoptosis_Mitochondrial Control of Apoptosis,Autophagy,Cancer,Cell Biology & Developmental Biology,Death Receptor Signaling Pathway,Endocrine & Metabolism,Immunology & Inflammation,Invasion and Metastasis,Mitochondrial metabolism,Mitochondrial metabolism_Mitochondrial markers,Neurodegenerative Diseases,Neuroscience,PI3K-Akt Signaling Pathway,Protein phosphorylation,Signal Transduction,Stem Cells,Tumor biomarkers,BCL2

Molecular Weight: 26kDa

Gene ID: 596

UniProt: [P10415](#)

Pathways: [MAPK Signaling](#), [PI3K-Akt Signaling](#), [Apoptosis](#), [Caspase Cascade in Apoptosis](#), [Regulation of Muscle Cell Differentiation](#), [Cell-Cell Junction Organization](#), [Skeletal Muscle Fiber Development](#), [Autophagy](#), [Smooth Muscle Cell Migration](#), [Negative Regulation of intrinsic apoptotic Signaling](#)

Application Details

Application Notes: WB,1:500 - 1:2000,IHC,1:50 - 1:200,IP,1:50 - 1:200

Restrictions: For Research Use only

Handling

Format: Liquid

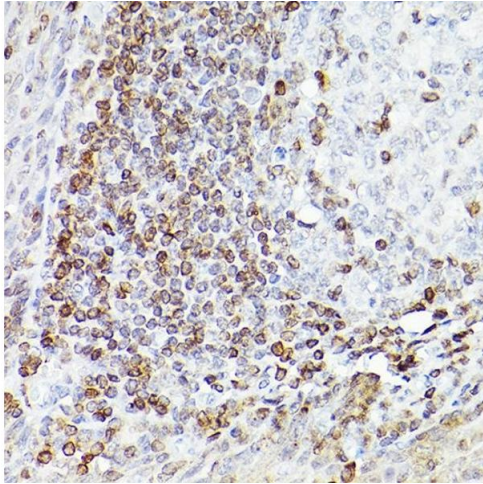
Buffer: PBS with 0.02 % sodium azide,0.05 % BSA,50 % glycerol, pH 7.3.

Preservative: Sodium azide

Precaution of Use: This product contains Sodium azide: a POISONOUS AND HAZARDOUS SUBSTANCE which should be handled by trained staff only.

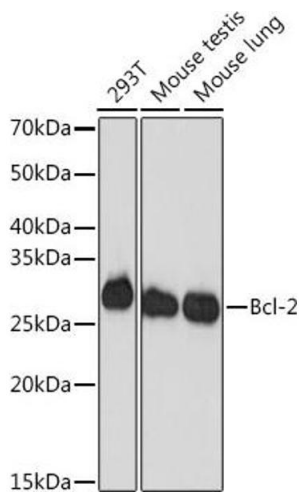
Storage: -20 °C

Storage Comment: Store at -20°C. Avoid freeze / thaw cycles.



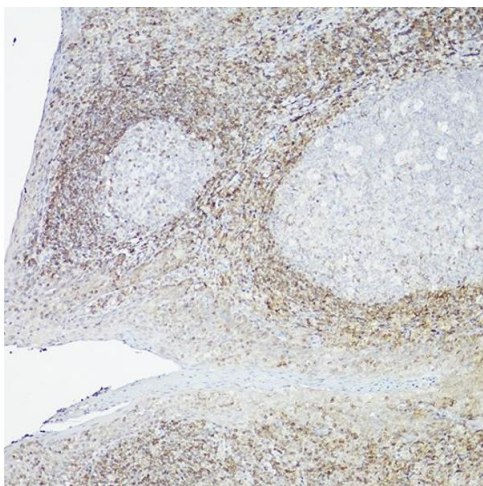
Immunohistochemistry

Image 1. Immunohistochemistry of paraffin-embedded Human tonsil(400X) using Bcl-2 antibody (ABIN7265810) at dilution of 1:100 (40x lens).Perform high pressure antigen retrieval with 10 mM citrate buffer pH 6.0 before commencing with IHC staining protocol.



Western Blotting

Image 2. Western blot analysis of extracts of various cell lines, using Bcl-2 antibody (ABIN7265810) at 1:1000 dilution.Secondary antibody: HRP Goat Anti-Rabbit IgG (H+L) (ABIN1684268 and ABIN3020597) at 1:10000 dilution.Lysates/proteins: 25 µg per lane.Blocking buffer: 3 % nonfat dry milk in TBST.Detection: ECL Basic Kit (RM00020).Exposure time: 3 min.



Immunohistochemistry

Image 3. Immunohistochemistry of paraffin-embedded Human tonsil(100X) using Bcl-2 antibody (ABIN7265810) at dilution of 1:100 (40x lens).Perform high pressure antigen retrieval with 10 mM citrate buffer pH 6.0 before commencing with IHC staining protocol.

Please check the [product details page](#) for more images. Overall 7 images are available for ABIN7265810.