

Datasheet for ABIN7265818
anti-BRAF antibody (AA 350-449)



[Go to Product page](#)

2 Images

Overview

Quantity:	100 µL
Target:	BRAF
Binding Specificity:	AA 350-449
Reactivity:	Human
Host:	Rabbit
Clonality:	Polyclonal
Application:	Western Blotting (WB), Immunohistochemistry (IHC)

Product Details

Purpose:	B-Raf Rabbit pAb
Immunogen:	Recombinant fusion protein containing a sequence corresponding to amino acids 350-449 of human B-Raf (NP_004324.2).
Sequence:	DEDHRNQFGQ RDRSSSAPNV HINTIEPVNI DDLIRDQGFR GDGGSTTGLS ATPPASLPGS LTNVKALQKS PGPQREKSS SSSSEDRNRMK TLGRDSSDD
Isotype:	IgG
Cross-Reactivity:	Human, Mouse, Rat
Characteristics:	Polyclonal Antibodies
Purification:	Affinity purification

Target Details

Target:	BRAF
Alternative Name:	BRAF (BRAF Products)
Background:	<p>This gene encodes a protein belonging to the raf/mil family of serine/threonine protein kinases. This protein plays a role in regulating the MAP kinase/ERKs signaling pathway, which affects cell division, differentiation, and secretion. Mutations in this gene are associated with cardiofaciocutaneous syndrome, a disease characterized by heart defects, mental retardation and a distinctive facial appearance. Mutations in this gene have also been associated with various cancers, including non-Hodgkin lymphoma, colorectal cancer, malignant melanoma, thyroid carcinoma, non-small cell lung carcinoma, and adenocarcinoma of lung. A pseudogene, which is located on chromosome X, has been identified for this gene.,BRAF,B-RAF1,B-raf,BRAF1,NS7,RAFB1,Cancer,Signal Transduction,G protein signaling,G2/M DNA Damage Checkpoint,Kinase,Serine/threonine kinases,Tyrosine kinases,ErbB-HER Signaling Pathway,MAPK-Erk Signaling Pathway,Cell Biology & Developmental Biology,Apoptosis,Inhibition of Apoptosis,Cell Cycle,Cell differentiation,ESC Pluripotency and Differentiation,Immunology & Inflammation,T Cell Receptor Signaling Pathway,IL-6 Receptor Signaling Pathway,Neuroscience,BRAF</p>
Molecular Weight:	84kDa
Gene ID:	673
UniProt:	P15056
Pathways:	MAPK Signaling , RTK Signaling , Neurotrophin Signaling Pathway , Ribonucleoprotein Complex Subunit Organization , Hepatitis C , Autophagy

Application Details

Application Notes:	WB,1:500 - 1:2000,IHC,1:50 - 1:200
Restrictions:	For Research Use only

Handling

Format:	Liquid
Buffer:	PBS with 0.02 % sodium azide,50 % glycerol, pH 7.3.
Preservative:	Sodium azide
Precaution of Use:	This product contains Sodium azide: a POISONOUS AND HAZARDOUS SUBSTANCE which

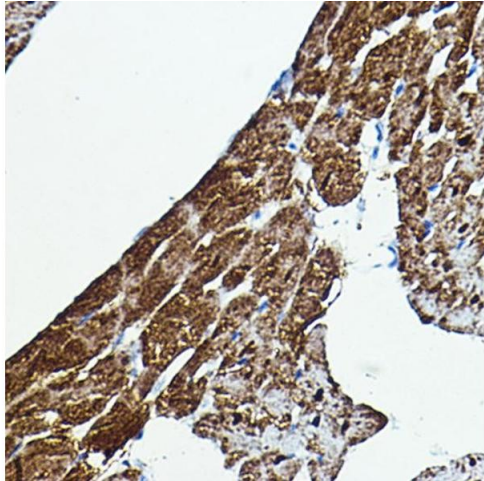
Handling

should be handled by trained staff only.

Storage: -20 °C

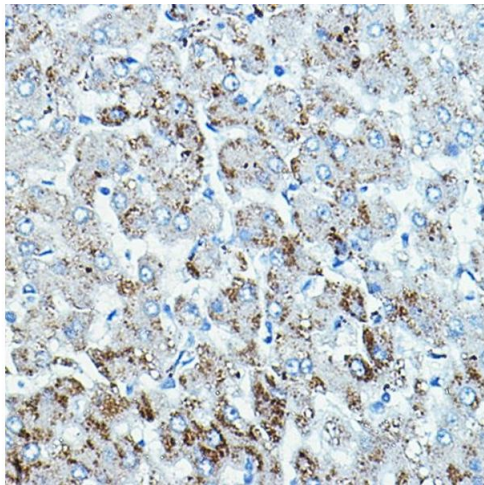
Storage Comment: Store at -20°C. Avoid freeze / thaw cycles.

Images



Immunohistochemistry

Image 1. Immunohistochemistry of paraffin-embedded rat heart using B-Raf Rabbit pAb (ABIN7265818) at dilution of 1:100 (40x lens). Perform high pressure antigen retrieval with 10 mM citrate buffer pH 6.0 before commencing with IHC staining protocol.



Immunohistochemistry

Image 2. Immunohistochemistry of paraffin-embedded human liver using B-Raf Rabbit pAb (ABIN7265818) at dilution of 1:100 (40x lens). Perform high pressure antigen retrieval with 10 mM citrate buffer pH 6.0 before commencing with IHC staining protocol.