

Datasheet for ABIN7265820  
**anti-BIRC2 antibody**



[Go to Product page](#)

2 Images

## Overview

Quantity:	100 µL
Target:	BIRC2
Reactivity:	Human
Host:	Rabbit
Clonality:	Monoclonal
Conjugate:	This BIRC2 antibody is un-conjugated
Application:	Western Blotting (WB), Immunohistochemistry (IHC)

## Product Details

Purpose:	clAP1 Rabbit mAb
Immunogen:	A synthesized peptide derived from human clAP1.
Isotype:	IgG
Cross-Reactivity:	Human, Rat
Characteristics:	Monoclonal Antibodies
Purification:	Affinity purification

## Target Details

Target:	BIRC2
Alternative Name:	BIRC2 ( <a href="#">BIRC2 Products</a> )
Background:	The protein encoded by this gene is a member of a family of proteins that inhibits apoptosis by

## Target Details

binding to tumor necrosis factor receptor-associated factors TRAF1 and TRAF2, probably by interfering with activation of ICE-like proteases. This encoded protein inhibits apoptosis induced by serum deprivation and menadione, a potent inducer of free radicals. Alternatively spliced transcript variants encoding different isoforms have been found for this gene. [provided by RefSeq, Jan 2012],API1,HIAP2,Hiap-2,MIHB,RNF48,c-IAP1,cIAP1,BIRC2,Apoptosis,Apoptosis\_Caspases,Apoptosis\_Death receptors & ligands,Apoptosis\_Inhibition of Apoptosis,Cancer,Cell Biology & Developmental Biology,Death Receptor Signaling Pathway,Endocrine & Metabolism,Immunology & Inflammation,Invasion and Metastasis,Ubiquitin,Ubiquitin\_Ubiquitin-Proteasome Signaling Pathway,BIRC2

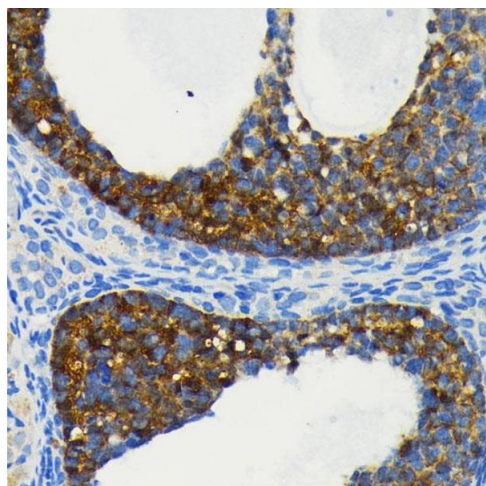
Molecular Weight:	70kDa
Gene ID:	329
UniProt:	<a href="#">Q13490</a>
Pathways:	<a href="#">Apoptosis</a> , <a href="#">Caspase Cascade in Apoptosis</a> , <a href="#">Activation of Innate immune Response</a> , <a href="#">Toll-Like Receptors Cascades</a>

## Application Details

Application Notes:	WB,1:500 - 1:2000,IHC,1:50 - 1:200
Restrictions:	For Research Use only

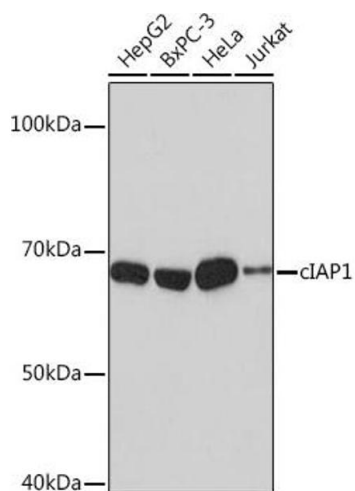
## Handling

Format:	Liquid
Buffer:	PBS with 0.02 % sodium azide,0.05 % BSA,50 % glycerol, pH 7.3.
Preservative:	Sodium azide
Precaution of Use:	This product contains Sodium azide: a POISONOUS AND HAZARDOUS SUBSTANCE which should be handled by trained staff only.
Storage:	-20 °C
Storage Comment:	Store at -20°C. Avoid freeze / thaw cycles.



### Immunohistochemistry

**Image 1.** Immunohistochemistry of paraffin-embedded rat ovary using cI antibody at dilution of 1:100 (40x lens). Perform microwave antigen retrieval with 10 mM PBS buffer pH 7.2 before commencing with IHC staining protocol.



### Western Blotting

**Image 2.** Western blot analysis of extracts of various cell lines, using cI antibody at 1:1000 dilution. Secondary antibody: HRP Goat Anti-Rabbit IgG (H+L) (ABIN1684268 and ABIN3020597) at 1:10000 dilution. Lysates/proteins: 25 µg per lane. Blocking buffer: 3% nonfat dry milk in TBST. Detection: ECL Basic Kit (RM00020). Exposure time: 3 min.