

Datasheet for ABIN7265827
anti-BANF1 antibody (AA 1-89)[Go to Product page](#)

1 Image

Overview

Quantity:	100 µL
Target:	BANF1
Binding Specificity:	AA 1-89
Reactivity:	Human
Host:	Rabbit
Clonality:	Polyclonal
Conjugate:	This BANF1 antibody is un-conjugated
Application:	Western Blotting (WB), Immunohistochemistry (IHC)

Product Details

Purpose:	BANF1 Rabbit pAb
Immunogen:	A synthetic peptide corresponding to a sequence within amino acids 1-89 of human BANF1 (NP_001137457.1).
Sequence:	MTTSQKHRDF VAEPMGKPV GSLAGIGEV L GKKLEERGFD KAYVVLGQFL VLKKDEDLFR EWLKDTCGAN AKQSRDCFGC LREWCDAFL
Isotype:	IgG
Cross-Reactivity:	Human, Mouse, Rat
Characteristics:	Polyclonal Antibodies
Purification:	Affinity purification

Target Details

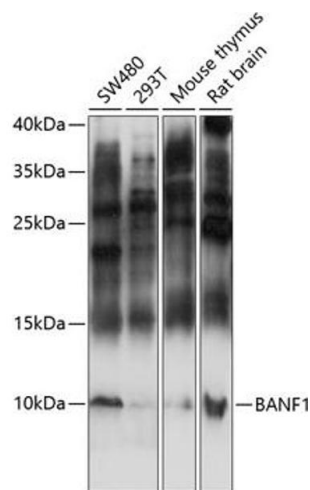
Target:	BANF1
Alternative Name:	BANF1 (BANF1 Products)
Background:	<p>The protein encoded by this gene was first identified by its ability to protect retroviruses from intramolecular integration and therefore promote intermolecular integration into the host cell genome. The protein forms a homodimer which localizes to both the nucleus and cytoplasm and is specifically associated with chromosomes during mitosis. This protein binds to double stranded DNA in a non-specific manner and also binds to LEM-domain containing proteins of the nuclear envelope. This protein is thought to facilitate nuclear reassembly by binding with both DNA and inner nuclear membrane proteins and thereby recruit chromatin to the nuclear periphery. Alternative splicing results in multiple transcript variants encoding the same protein.,BANF1,BAF,BCRP1,D14S1460,NGPS,BANF1</p>
Molecular Weight:	10kDa
Gene ID:	8815
UniProt:	O75531

Application Details

Application Notes:	WB,1:500 - 1:2000,IHC,1:50 - 1:100
Restrictions:	For Research Use only

Handling

Format:	Liquid
Buffer:	PBS with 0.02 % sodium azide,50 % glycerol, pH 7.3.
Preservative:	Sodium azide
Precaution of Use:	This product contains Sodium azide: a POISONOUS AND HAZARDOUS SUBSTANCE which should be handled by trained staff only.
Storage:	-20 °C
Storage Comment:	Store at -20°C. Avoid freeze / thaw cycles.



Western Blotting

Image 1. Western blot analysis of extracts of various cell lines, using B antibody (ABIN7265827) at 1:3000 dilution. Secondary antibody: HRP Goat Anti-Rabbit IgG (H+L) (ABIN1684268 and ABIN3020597) at 1:10000 dilution. Lysates/proteins: 25 µg per lane. Blocking buffer: 3 % nonfat dry milk in TBST. Detection: ECL Basic Kit (RM00020). Exposure time: 90s.