



[Go to Product page](#)

Datasheet for ABIN7265829
anti-BCAM antibody (AA 352-547)

1 Image

Overview

Quantity:	100 µL
Target:	BCAM
Binding Specificity:	AA 352-547
Reactivity:	Human
Host:	Rabbit
Clonality:	Polyclonal
Conjugate:	This BCAM antibody is un-conjugated
Application:	Western Blotting (WB)

Product Details

Purpose:	CD239/BCAM Rabbit pAb
Immunogen:	Recombinant fusion protein containing a sequence corresponding to amino acids 352-547 of human CD239/CD239/BCAM (NP_005572.2).
Sequence:	KTLELRVAYL DPLELSEGV LSLPLNSSAV VNCVHGLPT PALRWTKDST PLGDGPMLSL SSITFDSNGT YVCEASLPTV PVLRSRTQNFT LLVQGSPELK TAEIEPKADG SWREGDEVTL ICSARGHPDP KLSWSQLGGS PAEPIGRQG WVSSSLTLKV TSALSRDGIS CEASNPHGNK RHVFHFGTVS PQTSQA
Isotype:	IgG
Cross-Reactivity:	Mouse
Characteristics:	Polyclonal Antibodies

Product Details

Purification: Affinity purification

Target Details

Target: BCAM

Alternative Name: BCAM ([BCAM Products](#))

Background: This gene encodes Lutheran blood group glycoprotein, a member of the immunoglobulin superfamily and a receptor for the extracellular matrix protein, laminin. The protein contains five extracellular immunoglobulin domains, a single transmembrane domain, and a short C-terminal cytoplasmic tail. This protein may play a role in epithelial cell cancer and in vaso-occlusion of red blood cells in sickle cell disease. Polymorphisms in this gene define some of the antigens in the Lutheran system and also the Auberger system. Inactivating variants of this gene result in the recessive Lutheran null phenotype, Lu(a-b-), of the Lutheran blood group. Two transcript variants encoding different isoforms have been found for this gene. BCAM, AU, CD239, LU, MSK19, Immunology & Inflammation, CD markers, Cardiovascular, Blood, Blood Cell Antigens, BCAM

Molecular Weight: 67kDa

Gene ID: 4059

UniProt: [P50895](#)

Application Details

Application Notes: WB, 1:500 - 1:2000

Restrictions: For Research Use only

Handling

Format: Liquid

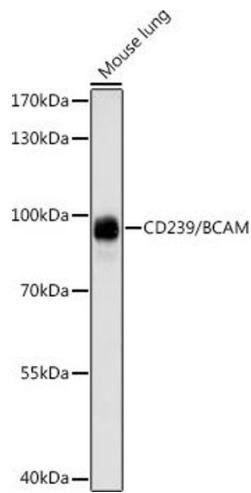
Buffer: PBS with 0.02 % sodium azide, 50 % glycerol, pH 7.3.

Preservative: Sodium azide

Precaution of Use: This product contains Sodium azide: a POISONOUS AND HAZARDOUS SUBSTANCE which should be handled by trained staff only.

Storage: -20 °C

Storage Comment: Store at -20°C. Avoid freeze / thaw cycles.



Western Blotting

Image 1. Western blot analysis of extracts of mouse lung, using CD239/CD239/BCAM antibody (ABIN7265829) at 1:1000 dilution. Secondary antibody: HRP Goat Anti-Rabbit IgG (H+L) (ABIN1684268 and ABIN3020597) at 1:10000 dilution. Lysates/proteins: 25 µg per lane. Blocking buffer: 3 % nonfat dry milk in TBST. Detection: ECL Enhanced Kit (RM00021). Exposure time: 60s.