

Datasheet for ABIN7265833
anti-BATF3 antibody (AA 1-127)



[Go to Product page](#)

1 Image

Overview

Quantity:	100 µL
Target:	BATF3
Binding Specificity:	AA 1-127
Reactivity:	Human
Host:	Rabbit
Clonality:	Polyclonal
Conjugate:	This BATF3 antibody is un-conjugated
Application:	Western Blotting (WB), Immunohistochemistry (IHC)

Product Details

Purpose:	BATF3 Rabbit pAb
Immunogen:	Recombinant fusion protein containing a sequence corresponding to amino acids 1-127 of human BATF3 (NP_061134.1).
Sequence:	MSQGLPAAGS VLQRSVAAPG NQPQPQQQQ SPEDDDRKVR RREKNRVAAQ RSRKKQTQKA DKLHEEYESL EQENTMLRRE IGKLTEELKH LTEALKEHEK MCPLLLCPMN FVPVPPRPDP VAGCLPR
Isotype:	IgG
Cross-Reactivity:	Rat
Characteristics:	Polyclonal Antibodies
Purification:	Affinity purification

Target Details

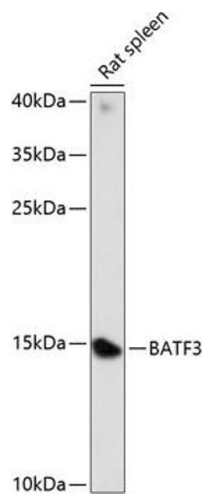
Target:	BATF3
Alternative Name:	BATF3 (BATF3 Products)
Background:	This gene encodes a member of the basic leucine zipper protein family. The encoded protein functions as a transcriptional repressor when heterodimerizing with JUN. The protein may play a role in repression of interleukin-2 and matrix metalloproteinase-1 transcription.,BATF3,JDP1,JUNDM1,SNFT,Epigenetics & Nuclear Signaling,Transcription Factors,BATF3
Molecular Weight:	14kDa
Gene ID:	55509
UniProt:	Q9NR55

Application Details

Application Notes:	WB,1:500 - 1:2000,IHC,1:50 - 1:100
Restrictions:	For Research Use only

Handling

Format:	Liquid
Buffer:	PBS with 0.02 % sodium azide,50 % glycerol, pH 7.3.
Preservative:	Sodium azide
Precaution of Use:	This product contains Sodium azide: a POISONOUS AND HAZARDOUS SUBSTANCE which should be handled by trained staff only.
Storage:	-20 °C
Storage Comment:	Store at -20°C. Avoid freeze / thaw cycles.



Western Blotting

Image 1. Western blot analysis of extracts of rat spleen, using B antibody (ABIN7265833) at 1:1000 dilution. Secondary antibody: HRP Goat Anti-Rabbit IgG (H+L) (ABIN1684268 and ABIN3020597) at 1:10000 dilution. Lysates/proteins: 25 µg per lane. Blocking buffer: 3 % nonfat dry milk in TBST. Detection: ECL Basic Kit (RM00020). Exposure time: 30s.