



[Go to Product page](#)

Datasheet for ABIN7265834
anti-PRB4 antibody (AA 178-247)

1 Image

Overview

Quantity:	100 µL
Target:	PRB4
Binding Specificity:	AA 178-247
Reactivity:	Human
Host:	Rabbit
Clonality:	Polyclonal
Conjugate:	This PRB4 antibody is un-conjugated
Application:	Western Blotting (WB)

Product Details

Purpose:	PRB4 Rabbit pAb
Immunogen:	Recombinant fusion protein containing a sequence corresponding to amino acids 178-247 of human PRB4 (NP_002714.2).
Sequence:	SPPGKPGQPP QQEGNKPQGP PPPGKPGQPP PAGGNPQQPQ APPAGKPGQP PPPPQGGRPP RPAQGQPPQ
Isotype:	IgG
Cross-Reactivity:	Human, Mouse
Characteristics:	Polyclonal Antibodies
Purification:	Affinity purification

Target Details

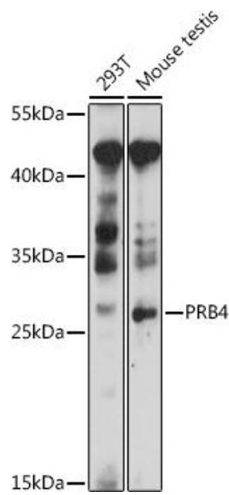
Target:	PRB4
Alternative Name:	PRB4 (PRB4 Products)
Background:	<p>This gene encodes a member of the heterogeneous family of basic, proline-rich, human salivary glycoproteins. The encoded preproprotein undergoes proteolytic processing to generate one or more mature peptides before secretion from the parotid glands. Multiple alleles of this gene exhibiting variations in the length of the tandem repeats have been identified. The reference genome encodes the "Small" allele. This gene is located in a cluster of closely related salivary proline-rich proteins on chromosome 12. Alternative splicing results in multiple transcript variants encoding different isoforms that may undergo similar proteolytic processing.,PRB4;Po,Epigenetics & Nuclear Signaling,Signal Transduction,G protein signaling,G-Protein-Coupled Receptors(GPCR),Cell Biology & Developmental Biology,PRB4</p>
Molecular Weight:	31kDa
Gene ID:	5545
UniProt:	P10163

Application Details

Application Notes:	WB,1:500 - 1:2000
Restrictions:	For Research Use only

Handling

Format:	Liquid
Buffer:	PBS with 0.02 % sodium azide,50 % glycerol, pH 7.3.
Preservative:	Sodium azide
Precaution of Use:	This product contains Sodium azide: a POISONOUS AND HAZARDOUS SUBSTANCE which should be handled by trained staff only.
Storage:	-20 °C
Storage Comment:	Store at -20°C. Avoid freeze / thaw cycles.



Western Blotting

Image 1. Western blot analysis of extracts of various cell lines, using PRB4 antibody (ABIN7265834) at 1:1000 dilution. Secondary antibody: HRP Goat Anti-Rabbit IgG (H+L) (ABIN1684268 and ABIN3020597) at 1:10000 dilution. Lysates/proteins: 25 µg per lane. Blocking buffer: 3 % nonfat dry milk in TBST. Detection: ECL Basic Kit (RM00020). Exposure time: 3 min.