



Datasheet for ABIN7265862

anti-BIM antibody



[Go to Product page](#)

2 Images

Overview

Quantity:	100 µL
Target:	BIM (BCL2L11)
Reactivity:	Human
Host:	Rabbit
Clonality:	Monoclonal
Conjugate:	This BIM antibody is un-conjugated
Application:	Western Blotting (WB)

Product Details

Purpose:	Bim Rabbit mAb
Immunogen:	A synthesized peptide derived from human Bim.
Isotype:	IgG
Cross-Reactivity:	Human, Mouse, Rat
Characteristics:	Monoclonal Antibodies
Purification:	Affinity purification

Target Details

Target:	BIM (BCL2L11)
Alternative Name:	Bim (BCL2L11 Products)
Background:	The protein encoded by this gene belongs to the BCL-2 protein family. BCL-2 family members

Target Details

form hetero- or homodimers and act as anti- or pro-apoptotic regulators that are involved in a wide variety of cellular activities. The protein encoded by this gene contains a Bcl-2 homology domain 3 (BH3). It has been shown to interact with other members of the BCL-2 protein family and to act as an apoptotic activator. The expression of this gene can be induced by nerve growth factor (NGF), as well as by the forkhead transcription factor FKHR-L1, which suggests a role of this gene in neuronal and lymphocyte apoptosis. Transgenic studies of the mouse counterpart suggested that this gene functions as an essential initiator of apoptosis in thymocyte-negative selection. Several alternatively spliced transcript variants of this gene have been identified. [provided by RefSeq, Jun 2013],BAM,BIM,BOD,Bim,BCL2L11,Apoptosis,Apoptosis_Bcl 2 family,Apoptosis_Inhibition of Apoptosis,Apoptosis_Mitochondrial Control of Apoptosis,Cancer,Cell Biology & Developmental Biology,Cell Intrinsic Innate Immunity Signaling Pathway,Endocrine & Metabolism,Immunology & Inflammation,Invasion and Metastasis,Kinase,MAPK-Erk Signaling Pathway,Neurodegenerative Diseases,Neurodegenerative Diseases_Amyloid Plaque and Neurofibrillary Tangle Formation in Alzheimers Disease,Neuroscience,PI3K-Akt Signaling Pathway,Protein phosphorylation,Signal Transduction,Bim

Molecular Weight: 22kDa

Gene ID: 10018

UniProt: [O43521](#)

Pathways: [PI3K-Akt Signaling](#), [Neurotrophin Signaling Pathway](#), [Tube Formation](#), [Positive Regulation of Endopeptidase Activity](#)

Application Details

Application Notes: WB,1:500 - 1:2000

Restrictions: For Research Use only

Handling

Format: Liquid

Buffer: PBS with 0.02 % sodium azide,0.05 % BSA,50 % glycerol, pH 7.3.

Preservative: Sodium azide

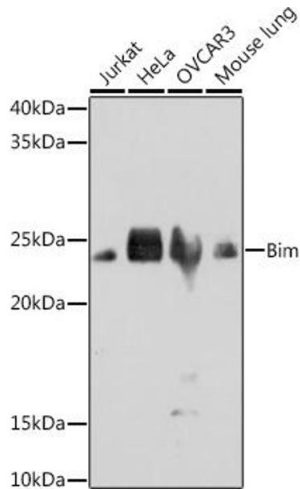
Precaution of Use: This product contains Sodium azide: a POISONOUS AND HAZARDOUS SUBSTANCE which should be handled by trained staff only.

Handling

Storage: -20 °C

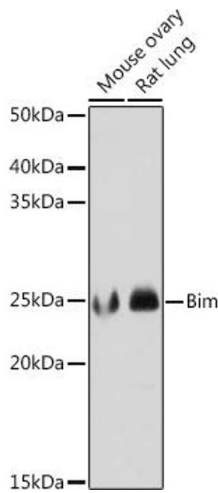
Storage Comment: Store at -20°C. Avoid freeze / thaw cycles.

Images



Western Blotting

Image 1. Western blot analysis of extracts of various cell lines, using Bim antibody (ABIN7265862) at 1:1000 dilution. Secondary antibody: HRP Goat Anti-Rabbit IgG (H+L) (ABIN1684268 and ABIN3020597) at 1:10000 dilution. Lysates/proteins: 25 µg per lane. Blocking buffer: 3 % nonfat dry milk in TBST. Detection: ECL Basic Kit (RM00020). Exposure time: 3 min.



Western Blotting

Image 2. Western blot analysis of extracts of various cell lines, using Bim antibody (ABIN7265862) at 1:1000 dilution. Secondary antibody: HRP Goat Anti-Rabbit IgG (H+L) (ABIN1684268 and ABIN3020597) at 1:10000 dilution. Lysates/proteins: 25 µg per lane. Blocking buffer: 3 % nonfat dry milk in TBST. Detection: ECL Enhanced Kit (RM00021). Exposure time: 3 min.