

Datasheet for ABIN7265864
anti-BCL2L12 antibody

2 Images

[Go to Product page](#)

Overview

Quantity:	100 µL
Target:	BCL2L12
Reactivity:	Human
Host:	Rabbit
Clonality:	Monoclonal
Conjugate:	This BCL2L12 antibody is un-conjugated
Application:	Western Blotting (WB), Immunohistochemistry (IHC)

Product Details

Purpose:	BCL2L12 Rabbit mAb
Immunogen:	Recombinant fusion protein of human BCL2L12
Isotype:	IgG
Cross-Reactivity:	Human
Characteristics:	Monoclonal Antibodies
Purification:	Affinity purification

Target Details

Target:	BCL2L12
Alternative Name:	BCL2L12 (BCL2L12 Products)
Background:	This gene encodes a member of a family of proteins containing a Bcl-2 homology domain 2

Target Details

(BH2). The encoded protein is an anti-apoptotic factor that acts as an inhibitor of caspases 3 and 7 in the cytoplasm. In the nucleus, it binds to the p53 tumor suppressor protein, preventing its association with target genes. Overexpression of this gene has been detected in a number of different cancers. There is a pseudogene for this gene on chromosome 3. Alternative splicing results in multiple transcript variants. [provided by RefSeq, Sep 2013],Apoptosis,Apoptosis_Bcl 2 family,Cancer,Cell Biology & Developmental Biology,Endocrine & Metabolism,Invasion and Metastasis,BCL2L12

Molecular Weight: 32kDa

Gene ID: 83596

UniProt: [Q9HB09](#)

Application Details

Application Notes: WB,1:500 - 1:2000,IHC,1:50 - 1:200

Restrictions: For Research Use only

Handling

Format: Liquid

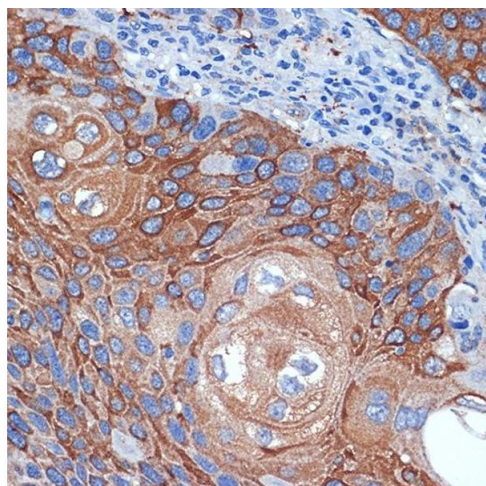
Buffer: PBS with 0.02 % sodium azide,0.05 % BSA,50 % glycerol, pH 7.3.

Preservative: Sodium azide

Precaution of Use: This product contains Sodium azide: a POISONOUS AND HAZARDOUS SUBSTANCE which should be handled by trained staff only.

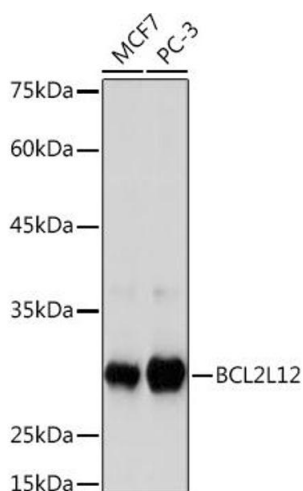
Storage: -20 °C

Storage Comment: Store at -20°C. Avoid freeze / thaw cycles.



Immunohistochemistry

Image 1. Immunohistochemistry of paraffin-embedded human esophageal cancer using BCL2L12 Rabbit mAb (ABIN7265864) at dilution of 1:100 (40x lens). Perform microwave antigen retrieval with 10 mM Tris/EDTA buffer pH 9.0 before commencing with IHC staining protocol.



Western Blotting

Image 2. Western blot analysis of extracts of various cell lines, using BCL2L12 Rabbit mAb (ABIN7265864) at 1:1000 dilution. Secondary antibody: HRP Goat Anti-Rabbit IgG (H+L) (ABIN1684268 and ABIN3020597) at 1:10000 dilution. Lysates/proteins: 25 µg per lane. Blocking buffer: 3 % nonfat dry milk in TBST. Detection: ECL Basic Kit (RM00020). Exposure time: 180s.