



[Go to Product page](#)

Datasheet for ABIN7265865
anti-BCL2L14 antibody

5 Images

Overview

Quantity:	100 µL
Target:	BCL2L14
Reactivity:	Human
Host:	Rabbit
Clonality:	Monoclonal
Conjugate:	This BCL2L14 antibody is un-conjugated
Application:	Western Blotting (WB), Immunohistochemistry (IHC)

Product Details

Purpose:	BCL2L14/BCLG Rabbit mAb
Immunogen:	Recombinant protein of human BCL2L14/BCL2L14/BCLG.
Isotype:	IgG
Cross-Reactivity:	Human, Mouse, Rat
Characteristics:	Monoclonal Antibodies
Purification:	Affinity purification

Target Details

Target:	BCL2L14
Alternative Name:	BCLG (BCL2L14 Products)
Background:	The protein encoded by this gene belongs to the BCL2 protein family. BCL2 family members

Target Details

form hetero- or homodimers and act as anti- or pro-apoptotic regulators that are involved in a wide variety of cellular activities. Overexpression of this gene has been shown to induce apoptosis in cells. Three alternatively spliced transcript variants encoding two distinct isoforms have been reported for this gene.,BCL2L14, BCLG, BCL2 like 14,Cell Biology & Developmental Biology,Apoptosis,BCLG

Molecular Weight: 40kDa

Gene ID: 79370

UniProt: [Q9BZR8](#)

Application Details

Application Notes: WB,1:500 - 1:2000,IHC,1:50 - 1:200

Restrictions: For Research Use only

Handling

Format: Liquid

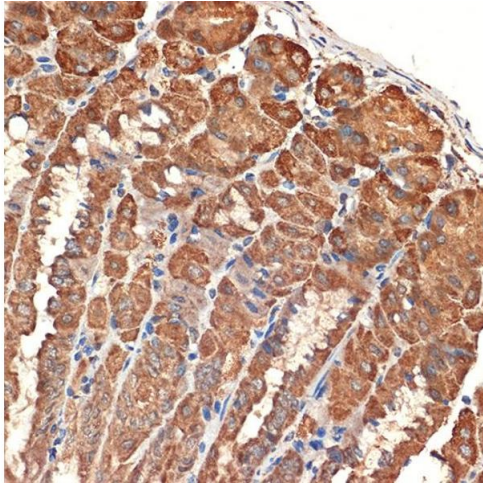
Buffer: PBS with 0.02 % sodium azide,0.05 % BSA,50 % glycerol, pH 7.3.

Preservative: Sodium azide

Precaution of Use: This product contains Sodium azide: a POISONOUS AND HAZARDOUS SUBSTANCE which should be handled by trained staff only.

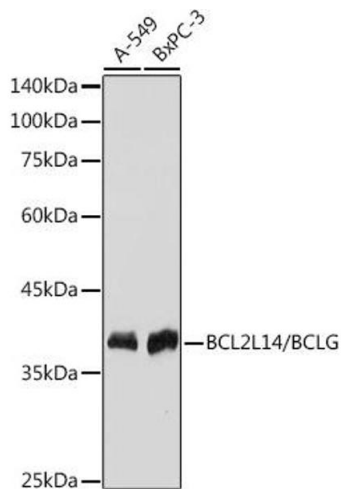
Storage: -20 °C

Storage Comment: Store at -20°C. Avoid freeze / thaw cycles.



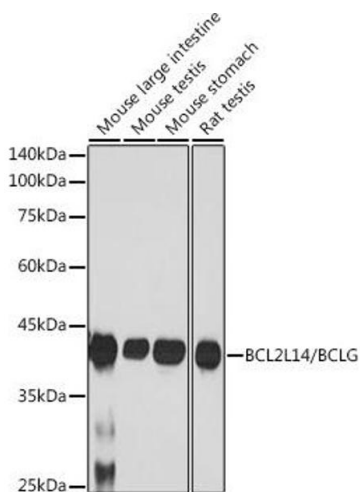
Immunohistochemistry

Image 1. Immunohistochemistry of paraffin-embedded mouse stomach using BCL2L14/BCL2L14/BCLG Rabbit mAb (ABIN7265865) at dilution of 1:100 (40x lens). Perform microwave antigen retrieval with 10 mM Tris/EDTA buffer pH 9.0 before commencing with IHC staining protocol.



Western Blotting

Image 2. Western blot analysis of extracts of various cell lines, using BCL2L14/BCL2L14/BCLG antibody (ABIN7265865) at 1:1000 dilution. Secondary antibody: HRP Goat Anti-Rabbit IgG (H+L) (ABIN1684268 and ABIN3020597) at 1:10000 dilution. Lysates/proteins: 25 µg per lane. Blocking buffer: 3% nonfat dry milk in TBST. Detection: ECL Basic Kit (RM00020). Exposure time: 1s.



Western Blotting

Image 3. Western blot analysis of extracts of various cell lines, using BCL2L14/BCL2L14/BCLG antibody (ABIN7265865) at 1:1000 dilution. Secondary antibody: HRP Goat Anti-Rabbit IgG (H+L) (ABIN1684268 and ABIN3020597) at 1:10000 dilution. Lysates/proteins: 25 µg per lane. Blocking buffer: 3% nonfat dry milk in TBST. Detection: ECL Basic Kit (RM00020). Exposure time: 180s.

Please check the [product details page](#) for more images. Overall 5 images are available for ABIN7265865.