



Datasheet for ABIN7265887  
**anti-BOP1 antibody (AA 600-680)**



[Go to Product page](#)

3 Images

Overview

Quantity:	100 µL
Target:	BOP1
Binding Specificity:	AA 600-680
Reactivity:	Human
Host:	Rabbit
Clonality:	Polyclonal
Conjugate:	This BOP1 antibody is un-conjugated
Application:	Western Blotting (WB), Immunohistochemistry (IHC)

Product Details

Purpose:	BOP1 Rabbit pAb
Immunogen:	Recombinant fusion protein containing a sequence corresponding to amino acids 600-680 of human BOP1 (NP_056016.1).
Isotype:	IgG
Cross-Reactivity:	Human, Mouse, Rat
Characteristics:	Polyclonal Antibodies
Purification:	Affinity purification

Target Details

Target:	BOP1
---------	------

## Target Details

Alternative Name:	BOP1 ( <a href="#">BOP1 Products</a> )
Background:	Component of the PeBoW complex, which is required for maturation of 28S and 5.8S ribosomal RNAs and formation of the 60S ribosome.,BOP1
Molecular Weight:	84kDa
Gene ID:	23246
UniProt:	<a href="#">Q14137</a>

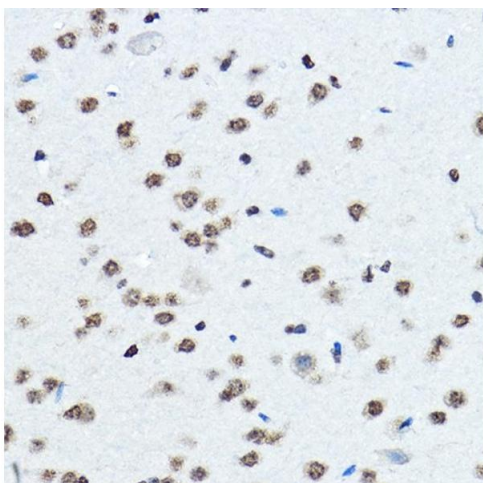
## Application Details

Application Notes:	WB,1:1000 - 1:2000,IHC,1:50 - 1:200
Restrictions:	For Research Use only

## Handling

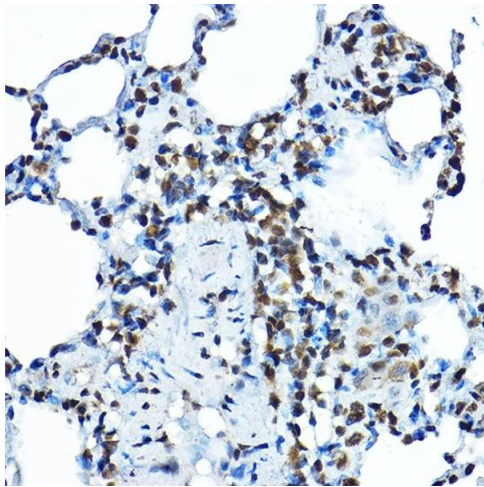
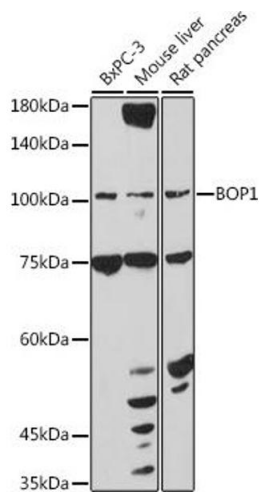
Format:	Liquid
Buffer:	PBS with 0.02 % sodium azide,50 % glycerol, pH 7.3.
Preservative:	Sodium azide
Precaution of Use:	This product contains Sodium azide: a POISONOUS AND HAZARDOUS SUBSTANCE which should be handled by trained staff only.
Storage:	-20 °C
Storage Comment:	Store at -20°C. Avoid freeze / thaw cycles.

## Images



### Immunohistochemistry

**Image 1.** Immunohistochemistry of paraffin-embedded mouse brain using BOP1 Rabbit pAb (ABIN7265887) at dilution of 1:100 (40x lens). Perform high pressure antigen retrieval with 10 mM citrate buffer pH 6.0 before commencing with IHC staining protocol.



### Western Blotting

**Image 2.** Western blot analysis of extracts of various cell lines, using BOP1 antibody (ABIN7265887) at 1:1000 dilution. Secondary antibody: HRP Goat Anti-Rabbit IgG (H+L) (ABIN1684268 and ABIN3020597) at 1:10000 dilution. Lysates/proteins: 25 µg per lane. Blocking buffer: 3 % nonfat dry milk in TBST. Detection: ECL Basic Kit (RM00020). Exposure time: 30s.

### Immunohistochemistry

**Image 3.** Immunohistochemistry of paraffin-embedded rat lung using BOP1 Rabbit pAb (ABIN7265887) at dilution of 1:100 (40x lens). Perform high pressure antigen retrieval with 10 mM citrate buffer pH 6.0 before commencing with IHC staining protocol.