

Datasheet for ABIN7265900

anti-BMP6 antibody**3** Images[Go to Product page](#)

Overview

Quantity:	100 µL
Target:	BMP6
Reactivity:	Human
Host:	Rabbit
Clonality:	Monoclonal
Conjugate:	This BMP6 antibody is un-conjugated
Application:	Western Blotting (WB), Immunofluorescence (IF)

Product Details

Purpose:	BMP6 Rabbit mAb
Immunogen:	A synthesized peptide derived from human BMP6
Isotype:	IgG
Cross-Reactivity:	Human, Mouse, Rat
Characteristics:	Monoclonal Antibodies
Purification:	Affinity purification

Target Details

Target:	BMP6
Alternative Name:	BMP6 (BMP6 Products)
Background:	This gene encodes a secreted ligand of the TGF-beta (transforming growth factor-beta)

Target Details

superfamily of proteins. Ligands of this family bind various TGF-beta receptors leading to recruitment and activation of SMAD family transcription factors that regulate gene expression. The encoded preproprotein is proteolytically processed to generate each subunit of the disulfide-linked homodimer. This protein regulates a wide range of biological processes including iron homeostasis, fat and bone development, and ovulation. Differential expression of this gene may be associated with progression of breast and prostate cancer. Mutations in this gene may be associated with iron overload in human patients. [provided by RefSeq, Jul 2016],VGR, VGR1,Cell Biology & Developmental Biology,Cell Cycle,Cell Cycle_Cell differentiation,Cytoskeleton,ESC Pluripotency and Differentiation,Extracellular Matrix,Extracellular Matrix_Bone,Growth factors,Immunology & Inflammation,NF-kB Signaling Pathway,Signal Transduction,Stem Cells,Wnt/ β -Catenin Signaling Pathway,BMP6

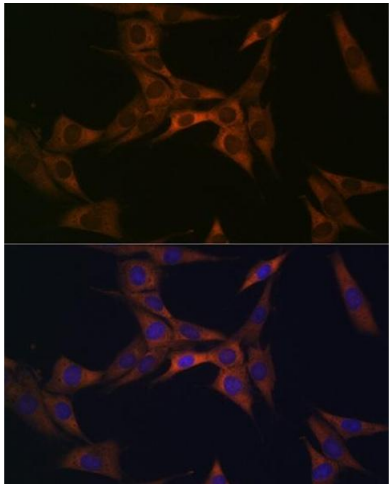
Molecular Weight:	42kDa
Gene ID:	654
UniProt:	P22004
Pathways:	Regulation of Hormone Metabolic Process , Regulation of Hormone Biosynthetic Process

Application Details

Application Notes:	WB,1:500 - 1:2000,IF,1:50 - 1:200
Restrictions:	For Research Use only

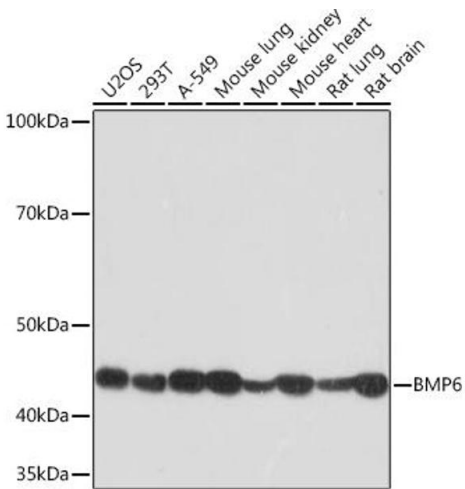
Handling

Format:	Liquid
Buffer:	PBS with 0.02 % sodium azide,0.05 % BSA,50 % glycerol, pH 7.3.
Preservative:	Sodium azide
Precaution of Use:	This product contains Sodium azide: a POISONOUS AND HAZARDOUS SUBSTANCE which should be handled by trained staff only.
Storage:	-20 °C
Storage Comment:	Store at -20°C. Avoid freeze / thaw cycles.



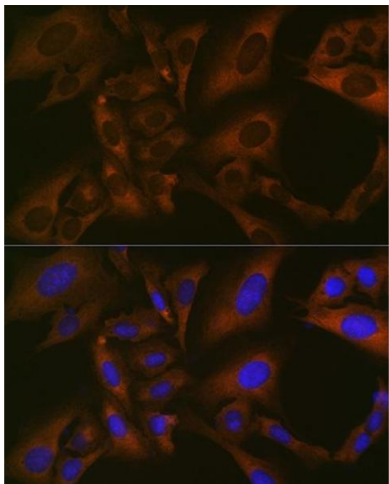
Immunofluorescence

Image 1. Immunofluorescence analysis of NIH-3T3 cells using BMP6 Rabbit mAb (ABIN7265900) at dilution of 1:100 (40x lens). Blue: DAPI for nuclear staining.



Western Blotting

Image 2. Western blot analysis of extracts of various cell lines, using BMP6 Rabbit mAb (ABIN7265900) at 1:1000 dilution. Secondary antibody: HRP Goat Anti-Rabbit IgG (H+L) (ABIN1684268 and ABIN3020597) at 1:10000 dilution. Lysates/proteins: 25 µg per lane. Blocking buffer: 3 % nonfat dry milk in TBST. Detection: ECL Basic Kit (RM00020). Exposure time: 60s.



Immunofluorescence

Image 3. Immunofluorescence analysis of U-2 OS cells using BMP6 Rabbit mAb (ABIN7265900) at dilution of 1:100 (40x lens). Blue: DAPI for nuclear staining.