



Datasheet for ABIN7265912
anti-BRE antibody (AA 51-229)



[Go to Product page](#)

4 Images

Overview

Quantity:	100 µL
Target:	BRE
Binding Specificity:	AA 51-229
Reactivity:	Human
Host:	Rabbit
Clonality:	Polyclonal
Conjugate:	This BRE antibody is un-conjugated
Application:	Western Blotting (WB), Immunohistochemistry (IHC), Immunofluorescence (IF)

Product Details

Purpose:	BRE Rabbit pAb
Immunogen:	Recombinant fusion protein containing a sequence corresponding to amino acids 51-229 of human BRE (NP_954661.1).
Sequence:	PNCDRFKLHI PYAGETLKWD IIFNAQYPEL PPDFIFGEDA EFLPDPSALQ NLASWNPSNP ECLLLVVKEL VQQYHQFQCS RLRESSRLMF EYQTLLEEPQ YGENMEIYAG KKNWWTGEFS ARFLLKLPVD FSNIPYLLK DVNEDPGEDV ALLSVSFEDT EATQVYPKLY LSPRIEHAL
Isotype:	IgG
Cross-Reactivity:	Human, Mouse, Rat
Characteristics:	Polyclonal Antibodies
Purification:	Affinity purification

Target Details

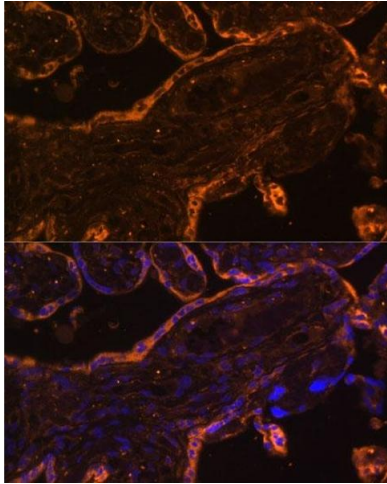
Target:	BRE
Alternative Name:	BRE (BRE Products)
Background:	This gene encodes an anti-apoptotic, death receptor-associated protein that interacts with tumor necrosis factor-receptor-1. The encoded protein acts as an adapter in several protein complexes, including the BRCA1-A complex and the BRISC complex. The BRCA1-A complex possesses ubiquitinase activity and targets sites of double strand DNA breaks, while the BRISC complex exhibits deubiquitinase activity and is involved in mitotic spindle assembly. This gene is upregulated in several types of cancer.,BRE,BRCC4,BRCC45,Epigenetics & Nuclear Signaling,DNA Damage & Repair,Cancer,Tumor suppressors,p53 pathway,Cell Biology & Developmental Biology,Apoptosis,Cell Cycle,Cell cycle inhibitors,Ubiquitin,Immunology & Inflammation,Cytokines,BRE
Molecular Weight:	42kDa/43kDa/46kDa
Gene ID:	9577
UniProt:	Q9NXR7
Pathways:	Positive Regulation of Response to DNA Damage Stimulus

Application Details

Application Notes:	WB,1:500 - 1:2000,IHC,1:50 - 1:100,IF,1:50 - 1:200
Restrictions:	For Research Use only

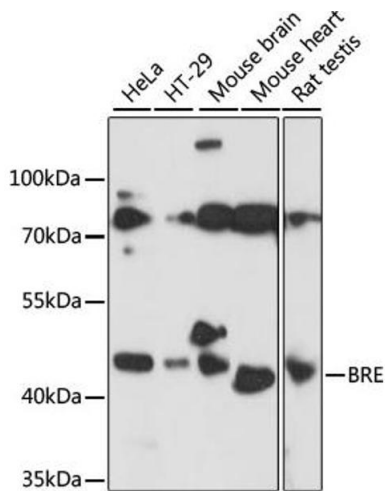
Handling

Format:	Liquid
Buffer:	PBS with 0.02 % sodium azide,50 % glycerol, pH 7.3.
Preservative:	Sodium azide
Precaution of Use:	This product contains Sodium azide: a POISONOUS AND HAZARDOUS SUBSTANCE which should be handled by trained staff only.
Storage:	-20 °C
Storage Comment:	Store at -20°C. Avoid freeze / thaw cycles.



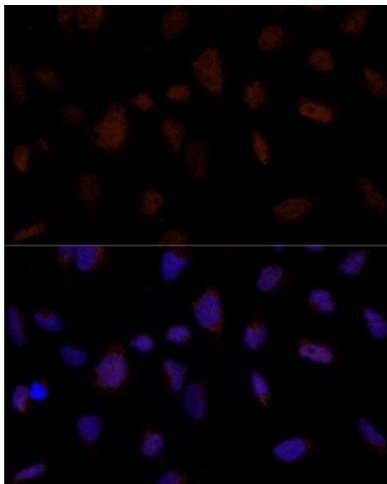
Immunofluorescence

Image 1. Immunofluorescence analysis of human placenta using BRE Polyclonal Antibody (ABIN7265912) at dilution of 1:100 (40x lens). Blue: DAPI for nuclear staining.



Western Blotting

Image 2. Western blot analysis of extracts of various cell lines, using BRE antibody (ABIN7265912) at 1:1000 dilution. Secondary antibody: HRP Goat Anti-Rabbit IgG (H+L) (ABIN1684268 and ABIN3020597) at 1:10000 dilution. Lysates/proteins: 25 µg per lane. Blocking buffer: 3 % nonfat dry milk in TBST. Detection: ECL Basic Kit (RM00020). Exposure time: 60s.



Immunofluorescence

Image 3. Immunofluorescence analysis of U-2 OS cells using BRE Polyclonal Antibody (ABIN7265912) at dilution of 1:100 (40x lens). Blue: DAPI for nuclear staining.

Please check the [product details page](#) for more images. Overall 4 images are available for ABIN7265912.