



[Go to Product page](#)

Datasheet for ABIN7265929
anti-BRMS1 antibody (AA 90-210)

5 Images

Overview

Quantity:	100 µL
Target:	BRMS1
Binding Specificity:	AA 90-210
Reactivity:	Human
Host:	Rabbit
Clonality:	Polyclonal
Conjugate:	This BRMS1 antibody is un-conjugated
Application:	Western Blotting (WB), Immunohistochemistry (IHC), Immunofluorescence (IF)

Product Details

Purpose:	BRMS1 Rabbit pAb
Immunogen:	Recombinant fusion protein containing a sequence corresponding to amino acids 90-210 of human BRMS1 (NP_056214.1).
Sequence:	LEEVGAERAP EYTEPLGGLQ RSLKIRIQVA GIYKGFCLDV IRNKYECELQ GAKQHLESEK LLLYDTLQGE LQERIQRLEE DRQSLDLSSE WWDDKLHARG SSRSWDSLPP SKRKKAPLVS G
Isotype:	IgG
Cross-Reactivity:	Human, Mouse, Rat
Characteristics:	Polyclonal Antibodies
Purification:	Affinity purification

Target Details

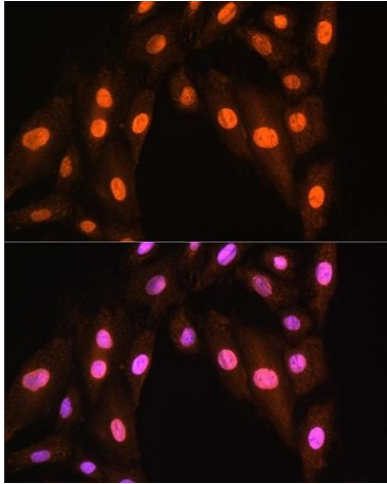
Target:	BRMS1
Alternative Name:	BRMS1 (BRMS1 Products)
Background:	This gene reduces the metastatic potential, but not the tumorigenicity, of human breast cancer and melanoma cell lines. The protein encoded by this gene localizes primarily to the nucleus and is a component of the mSin3a family of histone deacetylase complexes (HDAC). The protein contains two coiled-coil motifs and several imperfect leucine zipper motifs. Alternative splicing results in two transcript variants encoding different isoforms.,BRMS1,Epigenetics & Nuclear Signaling,Cancer,Tumor suppressors,BRMS1
Molecular Weight:	28kDa
Gene ID:	25855
UniProt:	Q9HCU9

Application Details

Application Notes:	WB,1:500 - 1:2000,IHC,1:50 - 1:100,IF,1:50 - 1:200
Restrictions:	For Research Use only

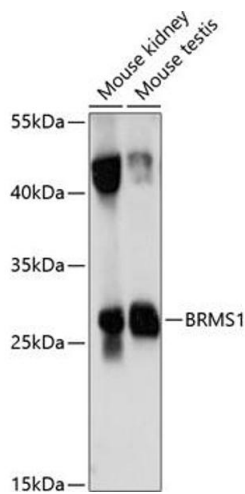
Handling

Format:	Liquid
Buffer:	PBS with 0.02 % sodium azide,50 % glycerol, pH 7.3.
Preservative:	Sodium azide
Precaution of Use:	This product contains Sodium azide: a POISONOUS AND HAZARDOUS SUBSTANCE which should be handled by trained staff only.
Storage:	-20 °C
Storage Comment:	Store at -20°C. Avoid freeze / thaw cycles.



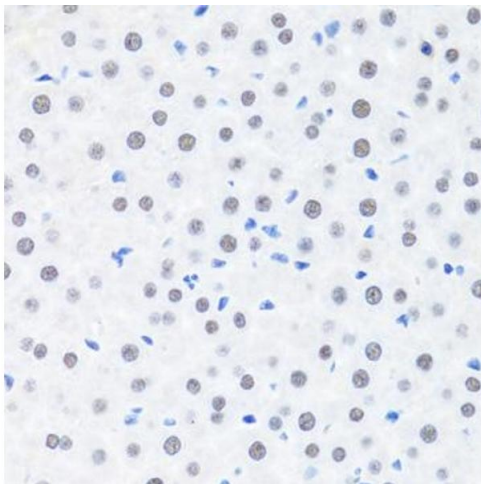
Immunofluorescence

Image 1. Immunofluorescence analysis of H9C2 cells using BRMS1 Rabbit pAb (ABIN7265929) at dilution of 1:100. Blue: DAPI for nuclear staining.



Western Blotting

Image 2. Western blot analysis of extracts of various cell lines, using BRMS1 antibody (ABIN7265929) at 1:1000 dilution. Secondary antibody: HRP Goat Anti-Rabbit IgG (H+L) (ABIN1684268 and ABIN3020597) at 1:10000 dilution. Lysates/proteins: 25 µg per lane. Blocking buffer: 3 % nonfat dry milk in TBST. Detection: ECL Basic Kit (RM00020). Exposure time: 10s.



Immunohistochemistry

Image 3. Immunohistochemistry of paraffin-embedded rat liver using BRMS1 antibody (ABIN7265929) at dilution of 1:100 (40x lens). Perform microwave antigen retrieval with 10 mM PBS buffer pH 7.2 before commencing with IHC staining protocol.

Please check the [product details page](#) for more images. Overall 5 images are available for ABIN7265929.