



[Go to Product page](#)

Datasheet for ABIN7265931  
**anti-BIN3 antibody (AA 1-253)**

1 Image

Overview

Quantity:	100 µL
Target:	BIN3
Binding Specificity:	AA 1-253
Reactivity:	Human
Host:	Rabbit
Clonality:	Polyclonal
Conjugate:	This BIN3 antibody is un-conjugated
Application:	Western Blotting (WB)

Product Details

Purpose:	BIN3 Rabbit pAb
Immunogen:	Recombinant fusion protein containing a sequence corresponding to amino acids 1-253 of human BIN3 (NP_061158.1).
Sequence:	MSWIPFKIGQ PKKQIVPKTV ERDFEREYGG LQQLLEEQTRR LQKDMKKSTD ADLAMSksAV KISLDLLSNP LCEQDQDLLN MVTALDTAMK RMDAFNQEKV NQIQKTVIEP LKKFGSVFPS LNMAVKRREQ ALQDYRRLQA KVEKYEEKEK TGPVLAKLHQ AREELRPVRE DFEAKNRQLL EEMPRFYGSR LDYFQPSFES LIRAQVVYYS EMHKIFGDLS HQLDQPGHSD EQRERENEAK LSELRALSIV ADD
Isotype:	IgG
Cross-Reactivity:	Human, Mouse, Rat
Characteristics:	Polyclonal Antibodies

## Product Details

---

Purification: Affinity purification

## Target Details

---

Target: BIN3

Alternative Name: BIN3 ([BIN3 Products](#))

Background: The product of this gene is a member of the BAR domain protein family. The encoded protein is comprised solely of a BAR domain which is predicted to form coiled-coil structures and proposed to mediate dimerization, sense and induce membrane curvature, and bind small GTPases. BAR domain proteins have been implicated in endocytosis, intracellular transport, and a diverse set of other processes.,BIN3,Signal Transduction,Cell Biology & Developmental Biology,Cell Cycle,Cytoskeleton,Microfilaments,Immunology & Inflammation,Cytokines,BIN3

Molecular Weight: 23kDa/29kDa

Gene ID: 55909

UniProt: [Q9NQY0](#)

## Application Details

---

Application Notes: WB,1:200 - 1:2000

Restrictions: For Research Use only

## Handling

---

Format: Liquid

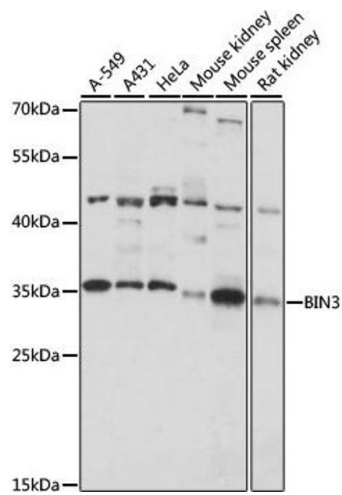
Buffer: PBS with 0.02 % sodium azide,50 % glycerol, pH 7.3.

Preservative: Sodium azide

Precaution of Use: This product contains Sodium azide: a POISONOUS AND HAZARDOUS SUBSTANCE which should be handled by trained staff only.

Storage: -20 °C

Storage Comment: Store at -20°C. Avoid freeze / thaw cycles.



### Western Blotting

**Image 1.** Western blot analysis of extracts of various cell lines, using BIN3 antibody (ABIN7265931) at 1:1000 dilution. Secondary antibody: HRP Goat Anti-Rabbit IgG (H+L) (ABIN1684268 and ABIN3020597) at 1:10000 dilution. Lysates/proteins: 25 µg per lane. Blocking buffer: 3 % nonfat dry milk in TBST. Detection: ECL Basic Kit (RM00020). Exposure time: 30s.