

Datasheet for ABIN7265939
anti-BRD2 antibody (AA 1-100)[Go to Product page](#)

4 Images

Overview

Quantity:	100 µL
Target:	BRD2
Binding Specificity:	AA 1-100
Reactivity:	Human
Host:	Rabbit
Clonality:	Polyclonal
Conjugate:	This BRD2 antibody is un-conjugated
Application:	Western Blotting (WB), Immunohistochemistry (IHC)

Product Details

Purpose:	BRD2 Rabbit pAb
Immunogen:	A synthetic peptide corresponding to a sequence within amino acids 1-100 of human BRD2 (NP_001186385.1).
Sequence:	MASVPALQLT PANPPPPEVS NPKKPGRVTN QLQYLHKVVM KALWKHQFAW PFRQPVDAVK LGLPDYHKII KQPMDMGTIK RRLENNYYWA ASECMQDFNT
Isotype:	IgG
Cross-Reactivity:	Human, Mouse, Rat
Characteristics:	Polyclonal Antibodies
Purification:	Affinity purification

Target Details

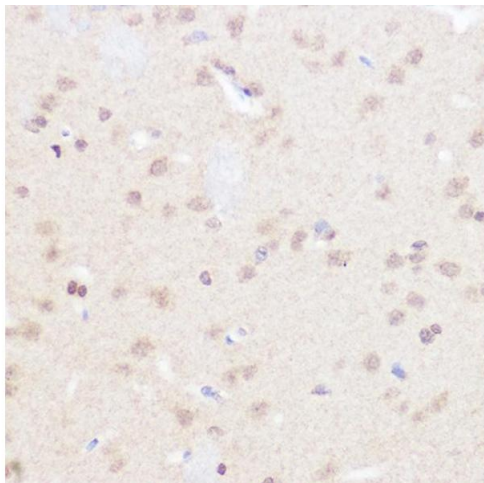
Target:	BRD2
Alternative Name:	BRD2 (BRD2 Products)
Background:	<p>This gene encodes a transcriptional regulator that belongs to the BET (bromodomains and extra terminal domain) family of proteins. This protein associates with transcription complexes and with acetylated chromatin during mitosis, and it selectively binds to the acetylated lysine-12 residue of histone H4 via its two bromodomains. The gene maps to the major histocompatibility complex (MHC) class II region on chromosome 6p21.3, but sequence comparison suggests that the protein is not involved in the immune response. This gene has been implicated in juvenile myoclonic epilepsy, a common form of epilepsy that becomes apparent in adolescence. Multiple alternatively spliced variants have been described for this gene.,BRD2,BRD2-IT1,D6S113E,FSH,FSRG1,NAT,O27.1.1,RING3,RNF3,Epigenetics & Nuclear Signaling,Signal Transduction,Kinase,Cell Biology & Developmental Biology,Ubiquitin,BRD2</p>
Molecular Weight:	74kDa/83kDa/88kDa/92kDa
Gene ID:	6046
UniProt:	P25440
Pathways:	Chromatin Binding , SARS-CoV-2 Protein Interactome , The Global Phosphorylation Landscape of SARS-CoV-2 Infection

Application Details

Application Notes:	WB,1:500 - 1:2000,IHC,1:50 - 1:200
Restrictions:	For Research Use only

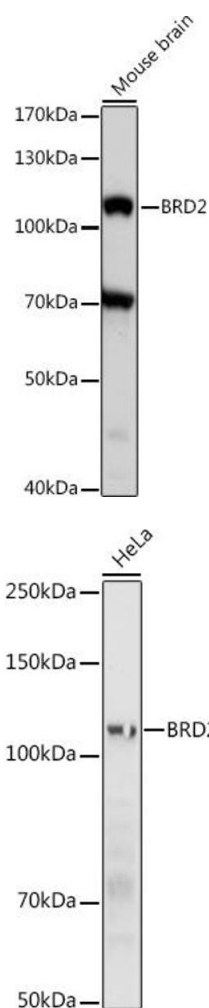
Handling

Format:	Liquid
Buffer:	PBS with 0.02 % sodium azide,50 % glycerol, pH 7.3.
Preservative:	Sodium azide
Precaution of Use:	This product contains Sodium azide: a POISONOUS AND HAZARDOUS SUBSTANCE which should be handled by trained staff only.
Storage:	-20 °C
Storage Comment:	Store at -20°C. Avoid freeze / thaw cycles.



Immunohistochemistry

Image 1. Immunohistochemistry of paraffin-embedded rat brain using BRD2 Rabbit pAb (ABIN7265939) at dilution of 1:50 (40x lens). Perform high pressure antigen retrieval with 10 mM citrate buffer pH 6.0 before commencing with IHC staining protocol.



Western Blotting

Image 2. Western blot analysis of extracts of mouse brain, using BRD2 antibody (ABIN7265939) at 1:1000 dilution. Secondary antibody: HRP Goat Anti-Rabbit IgG (H+L) (ABIN1684268 and ABIN3020597) at 1:10000 dilution. Lysates/proteins: 25 µg per lane. Blocking buffer: 3 % nonfat dry milk in TBST. Detection: ECL Basic Kit (RM00020). Exposure time: 1s.

Western Blotting

Image 3. Western blot analysis of extracts of HeLa cells, using BRD2 antibody (ABIN7265939) at 1:1000 dilution. HeLa cells were treated by NaCl (400 mM). Secondary antibody: HRP Goat Anti-Rabbit IgG (H+L) (ABIN1684268 and ABIN3020597) at 1:10000 dilution. Lysates/proteins: 25 µg per lane. Blocking buffer: 3 % nonfat dry milk in TBST. Detection: ECL Basic Kit (RM00020). Exposure time: 30s.

Please check the [product details page](#) for more images. Overall 4 images are available for ABIN7265939.