



[Go to Product page](#)

Datasheet for ABIN7265951
anti-BRIX1 antibody (AA 1-353)

2 Images

Overview

Quantity:	100 µL
Target:	BRIX1
Binding Specificity:	AA 1-353
Reactivity:	Human
Host:	Rabbit
Clonality:	Polyclonal
Conjugate:	This BRIX1 antibody is un-conjugated
Application:	Western Blotting (WB), Immunohistochemistry (IHC)

Product Details

Purpose:	BRIX1 Rabbit pAb
Immunogen:	Recombinant fusion protein containing a sequence corresponding to amino acids 1-353 of human BRIX1 (NP_060791.3).
Sequence:	MAATKRKRRG GFAVQAKKPK RNEIDAEPPEA KRHATAEEVE EEERDRIPGP VCKGKWKWKNKE RILIFSSRGI NFRTRHLMQD LRMLMPHSA DTKMDRKDKL FVINEVCEMK NCNKCIYFEA KKKQDLYMWL SNSPHGPSAK FLVQNIHTLA ELKMTGNCLK GSRPLLSFDP AFDELPHYAL LKELLIQIFS TPRYHPKSQP FVDHVFTFTI LDNRIWFRNF QIIEDAALV EIGPRFVLNL IKIFQGSFGG PTLYENPHYQ SPNMHRRVIR SITAACYREK QQVKDVQKLR KKEPKTLLPH DPTADVFTVP AEEKPIEQW VKPEPKVDLK ARKKRIYKRQ RKMQRMDSG KTK
Isotype:	IgG
Cross-Reactivity:	Human, Mouse, Rat

Product Details

Characteristics: Polyclonal Antibodies

Purification: Affinity purification

Target Details

Target: BRIX1

Alternative Name: BRIX1 ([BRIX1 Products](#))

Background: Required for biogenesis of the 60S ribosomal subunit.,BRIX1,BRIX,BXDC2,BRX1,Epigenetics & Nuclear Signaling,RNA Binding,Cell Biology & Developmental Biology,BRIX1

Molecular Weight: 41kDa

Gene ID: 55299

UniProt: [Q8TDN6](#)

Application Details

Application Notes: WB,1:500 - 1:2000,IHC,1:50 - 1:100

Restrictions: For Research Use only

Handling

Format: Liquid

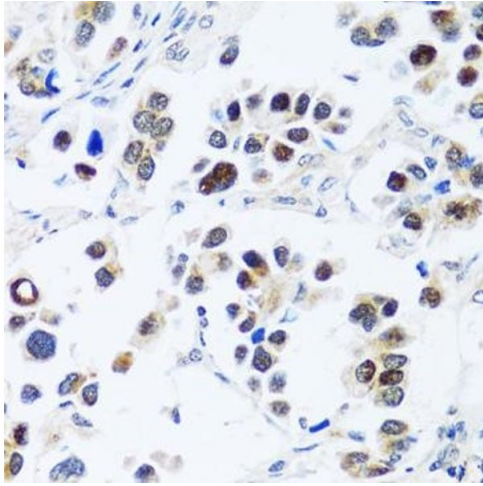
Buffer: PBS with 0.02 % sodium azide,50 % glycerol, pH 7.3.

Preservative: Sodium azide

Precaution of Use: This product contains Sodium azide: a POISONOUS AND HAZARDOUS SUBSTANCE which should be handled by trained staff only.

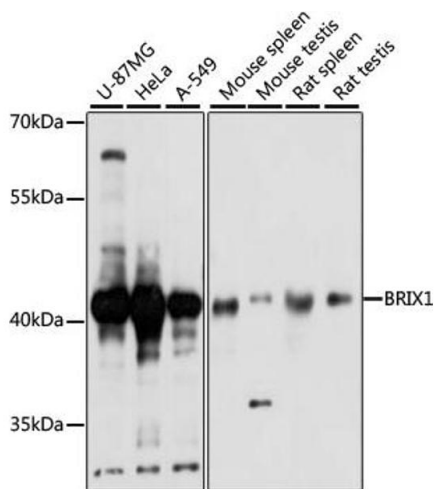
Storage: -20 °C

Storage Comment: Store at -20°C. Avoid freeze / thaw cycles.



Immunohistochemistry

Image 1. Immunohistochemistry of paraffin-embedded human lung cancer using BRIX1 antibody (ABIN7265951) at dilution of 1:100 (40x lens). Perform microwave antigen retrieval with 10 mM PBS buffer pH 7.2 before commencing with IHC staining protocol.



Western Blotting

Image 2. Western blot analysis of extracts of various cell lines, using BRIX1 antibody (ABIN7265951) at 1:1000 dilution. Secondary antibody: HRP Goat Anti-Rabbit IgG (H+L) (ABIN1684268 and ABIN3020597) at 1:10000 dilution. Lysates/proteins: 25 µg per lane. Blocking buffer: 3 % nonfat dry milk in TBST. Detection: ECL Basic Kit (RM00020). Exposure time: 1s.