

Datasheet for ABIN7265962

**anti-Butyrylcholinesterase antibody**[Go to Product page](#)**1** Image

## Overview

Quantity:	100 µL
Target:	Butyrylcholinesterase (BCHE)
Reactivity:	Human
Host:	Rabbit
Clonality:	Monoclonal
Application:	Western Blotting (WB)

## Product Details

Purpose:	Butyrylcholinesterase Rabbit mAb
Immunogen:	A synthesized peptide derived from human Butyrylcholinesterase
Isotype:	IgG
Cross-Reactivity:	Human
Characteristics:	Monoclonal Antibodies
Purification:	Affinity purification

## Target Details

Target:	Butyrylcholinesterase (BCHE)
Alternative Name:	BCHE ( <a href="#">BCHE Products</a> )
Background:	This gene encodes a cholinesterase enzyme and member of the type-B carboxylesterase/lipase family of proteins. The encoded enzyme exhibits broad substrate specificity and is involved in

## Target Details

the detoxification of poisons including organophosphate nerve agents and pesticides, and the metabolism of drugs including cocaine, heroin and aspirin. Humans homozygous for certain mutations in this gene exhibit prolonged apnea after administration of the muscle relaxant succinylcholine. [provided by RefSeq, Jul 2016],CHE1, CHE2, E1,Drug metabolism,Endocrine & Metabolism,Neurodegenerative Diseases,Neurodegenerative Diseases\_Amyloid Plaque and Neurofibrillary Tangle Formation in Alzheimers Disease,Neuroscience,Signal Transduction,BCHE

Molecular Weight: 90kDa

Gene ID: 590

UniProt: [P06276](#)

Pathways: [Peptide Hormone Metabolism](#)

## Application Details

Application Notes: WB,1:500 - 1:2000

Restrictions: For Research Use only

## Handling

Format: Liquid

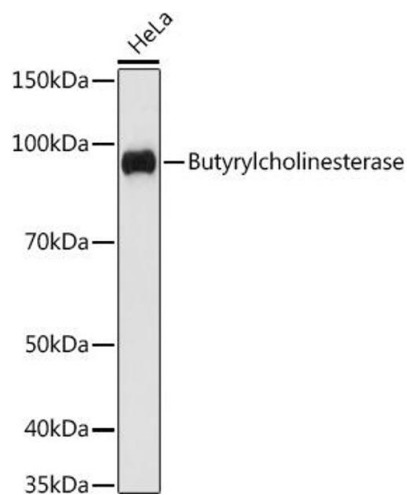
Buffer: PBS with 0.02 % sodium azide,0.05 % BSA,50 % glycerol, pH 7.3.

Preservative: Sodium azide

Precaution of Use: This product contains Sodium azide: a POISONOUS AND HAZARDOUS SUBSTANCE which should be handled by trained staff only.

Storage: -20 °C

Storage Comment: Store at -20°C. Avoid freeze / thaw cycles.



#### Western Blotting

**Image 1.** Western blot analysis of extracts of HeLa cells, using Butyrylcholinesterase antibody (ABIN7265962) at 1:1000 dilution. Secondary antibody: HRP Goat Anti-Rabbit IgG (H+L) (ABIN1684268 and ABIN3020597) at 1:10000 dilution. Lysates/proteins: 25 µg per lane. Blocking buffer: 3 % nonfat dry milk in TBST. Detection: ECL Basic Kit (RM00020). Exposure time: 60s.