



[Go to Product page](#)

Datasheet for ABIN7265970

## anti-CMIP antibody

### 4 Images

#### Overview

Quantity:	100 µL
Target:	CMIP
Reactivity:	Human
Host:	Rabbit
Clonality:	Polyclonal
Conjugate:	This CMIP antibody is un-conjugated
Application:	Western Blotting (WB), Immunohistochemistry (IHC)

#### Product Details

Purpose:	CMIP Rabbit pAb
Immunogen:	Recombinant protein of human CMIP.
Isotype:	IgG
Cross-Reactivity:	Human, Mouse, Rat
Characteristics:	Polyclonal Antibodies
Purification:	Affinity purification

#### Target Details

Target:	CMIP
Alternative Name:	CMIP ( <a href="#">CMIP Products</a> )
Background:	This gene encodes a c-Maf inducing protein that plays a role in T-cell signaling pathway.

## Target Details

Alternatively spliced transcript variants encoding different isoforms have been described for this gene.,TCMIP,CMIP

Molecular Weight: 86kDa

Gene ID: 80790

UniProt: [Q8IY22](#)

## Application Details

Application Notes: WB,1:500 - 1:2000,IHC,1:50 - 1:200

Restrictions: For Research Use only

## Handling

Format: Liquid

Buffer: PBS with 0.02 % sodium azide,50 % glycerol, pH 7.3.

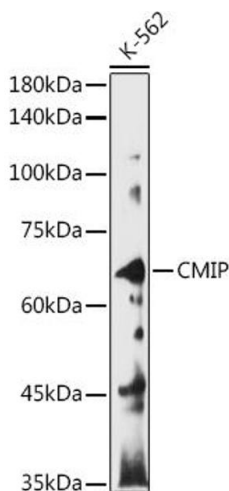
Preservative: Sodium azide

Precaution of Use: This product contains Sodium azide: a POISONOUS AND HAZARDOUS SUBSTANCE which should be handled by trained staff only.

Storage: -20 °C

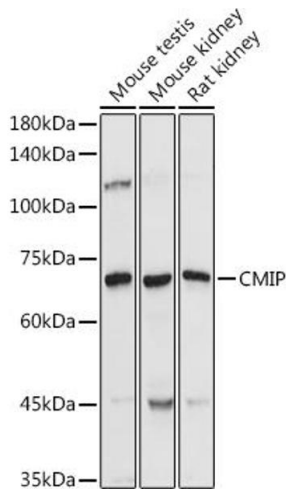
Storage Comment: Store at -20°C. Avoid freeze / thaw cycles.

## Images



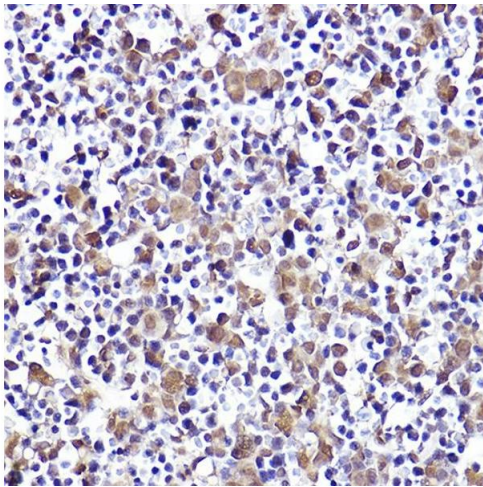
### Western Blotting

**Image 1.** Western blot analysis of extracts of K-562 cells, using CMIP antibody (ABIN7265970) at 1:1000 dilution. Secondary antibody: HRP Goat Anti-Rabbit IgG (H+L) (ABIN1684268 and ABIN3020597) at 1:10000 dilution. Lysates/proteins: 25 µg per lane. Blocking buffer: 3 % nonfat dry milk in TBST. Detection: ECL Basic Kit (RM00020). Exposure time: 180s.



### Western Blotting

**Image 2.** Western blot analysis of extracts of various cell lines, using CMIP antibody (ABIN7265970) at 1:1000 dilution. Secondary antibody: HRP Goat Anti-Rabbit IgG (H+L) (ABIN1684268 and ABIN3020597) at 1:10000 dilution. Lysates/proteins: 25 µg per lane. Blocking buffer: 3 % nonfat dry milk in TBST. Detection: ECL Basic Kit (RM00020). Exposure time: 30s.



### Immunohistochemistry

**Image 3.** Immunohistochemistry of paraffin-embedded mouse fetal liver using CMIP Rabbit pAb (ABIN7265970) at dilution of 1:50 (40x lens). Perform high pressure antigen retrieval with 10 mM citrate buffer pH 6.0 before commencing with IHC staining protocol.

Please check the [product details page](#) for more images. Overall 4 images are available for ABIN7265970.