

Datasheet for ABIN7265972

anti-CRP antibody

3 Images

[Go to Product page](#)

Overview

| | |
|--------------|---|
| Quantity: | 100 µL |
| Target: | CRP |
| Reactivity: | Human |
| Host: | Rabbit |
| Clonality: | Monoclonal |
| Conjugate: | This CRP antibody is un-conjugated |
| Application: | Western Blotting (WB), Immunohistochemistry (IHC) |

Product Details

| | |
|-------------------|--|
| Purpose: | C-Reactive Protein (CRP) Rabbit mAb |
| Immunogen: | A synthesized peptide derived from human C-Reactive Protein (C-Reactive Protein (CRP)) |
| Isotype: | IgG |
| Cross-Reactivity: | Human, Mouse |
| Characteristics: | Monoclonal Antibodies |
| Purification: | Affinity purification |

Target Details

| | |
|-------------------|---|
| Target: | CRP |
| Alternative Name: | CRP (CRP Products) |
| Background: | The protein encoded by this gene belongs to the pentaxin family. It is involved in several host |

Target Details

defense related functions based on its ability to recognize foreign pathogens and damaged cells of the host and to initiate their elimination by interacting with humoral and cellular effector systems in the blood. Consequently, the level of this protein in plasma increases greatly during acute phase response to tissue injury, infection, or other inflammatory stimuli. [provided by RefSeq, Sep 2009],CRP,PTX1,Apoptosis,Blood,Cardiovascular,Cell Biology & Developmental Biology,Cell Intrinsic Innate Immunity Signaling Pathway,Endocrine & Metabolism,Endocrine and metabolic diseases,Endocrine and metabolic diseases_Metabolic disorders,Epigenetics & Nuclear Signaling,Heart,Immunology & Inflammation,Neurodegenerative Diseases Markers,Neurodegenerative Diseases_Cerebralvascular accident,CVA,Neuroscience,Other Neurological disorders,CRP

Molecular Weight: 25kDa

Gene ID: 1401

UniProt: [P02741](#)

Pathways: [Carbohydrate Homeostasis](#)

Application Details

Application Notes: WB,1:500 - 1:2000,IHC,1:50 - 1:200

Restrictions: For Research Use only

Handling

Format: Liquid

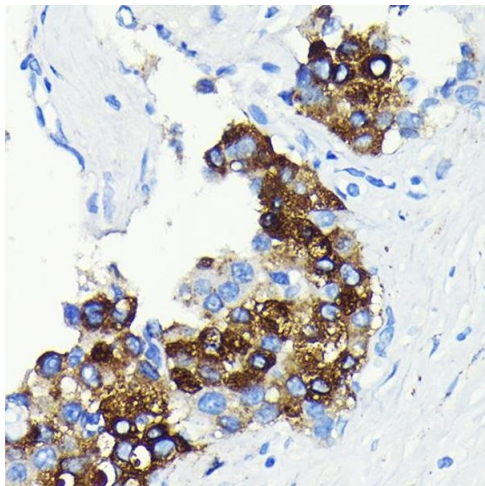
Buffer: PBS with 0.02 % sodium azide,0.05 % BSA,50 % glycerol, pH 7.3.

Preservative: Sodium azide

Precaution of Use: This product contains Sodium azide: a POISONOUS AND HAZARDOUS SUBSTANCE which should be handled by trained staff only.

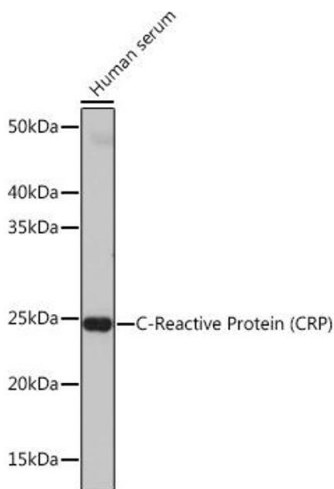
Storage: -20 °C

Storage Comment: Store at -20°C. Avoid freeze / thaw cycles.



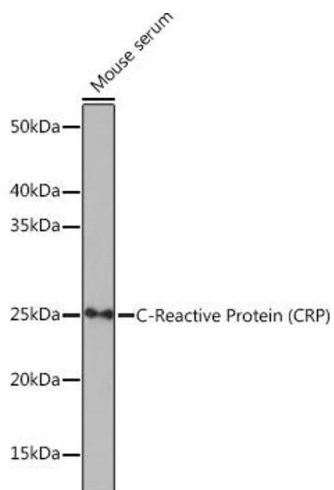
Immunohistochemistry

Image 1. Immunohistochemistry of paraffin-embedded human liver cancer using C-Reactive Protein (C-Reactive Protein (CRP)) Rabbit mAb (ABIN7265972) at dilution of 1:100 (40x lens). Perform microwave antigen retrieval with 10 mM PBS buffer pH 7.2 before commencing with IHC staining protocol.



Western Blotting

Image 2. Western blot analysis of extracts of Human serum, using C-Reactive Protein (C-Reactive Protein (CRP)) antibody (ABIN7265972) at 1:1000 dilution. Secondary antibody: HRP Goat Anti-Rabbit IgG (H+L) (ABIN1684268 and ABIN3020597) at 1:10000 dilution. Lysates/proteins: 25 µg per lane. Blocking buffer: 3 % nonfat dry milk in TBST. Detection: ECL Basic Kit (RM00020). Exposure time: 5s.



Western Blotting

Image 3. Western blot analysis of extracts of Mouse serum, using C-Reactive Protein (C-Reactive Protein (CRP)) antibody (ABIN7265972) at 1:1000 dilution. Secondary antibody: HRP Goat Anti-Rabbit IgG (H+L) (ABIN1684268 and ABIN3020597) at 1:10000 dilution. Lysates/proteins: 25 µg per lane. Blocking buffer: 3 % nonfat dry milk in TBST. Detection: ECL Enhanced Kit (RM00021). Exposure time: 3 min.