

## Datasheet for ABIN7265975 anti-CSK antibody (AA 1-200)



[Go to Product page](#)

### 2 Images

#### Overview

Quantity:	100 µL
Target:	CSK
Binding Specificity:	AA 1-200
Reactivity:	Human
Host:	Rabbit
Clonality:	Polyclonal
Conjugate:	This CSK antibody is un-conjugated
Application:	Western Blotting (WB), Immunofluorescence (IF)

#### Product Details

Purpose:	CSK Rabbit pAb
Immunogen:	Recombinant fusion protein containing a sequence corresponding to amino acids 1-200 of human CSK (NP_001120662.1).
Sequence:	MSAIQAAWPS GTECIAKYNF HGTAEQDLPF CKGDVLTIVA VTKDPNWKYA KNKVGREGII PANYVQKREG VKAGTKLSLM PWFHKGITRE QAERLLYPPE TGLFLVREST NYPGDYTLCV SCDGKVEHYR IMYHASKLSI DEEVYFENLM QLVEHYTSDA DGLCTRLIKP KVMEGTVAAQ DEFYRSGWAL NMKELKLLQT
Isotype:	IgG
Cross-Reactivity:	Human, Mouse, Rat
Characteristics:	Polyclonal Antibodies

## Product Details

Purification: Affinity purification

## Target Details

Target: CSK

Alternative Name: CSK ([CSK Products](#))

Background: Non-receptor tyrosine-protein kinase that plays an important role in the regulation of cell growth, differentiation, migration and immune response. Phosphorylates tyrosine residues located in the C-terminal tails of Src-family kinases (SFKs including LCK, SRC, HCK, FYN, LYN, CSK or YES1. Upon tail phosphorylation, Src-family members engage in intramolecular interactions between the phosphotyrosine tail and the SH2 domain that result in an inactive conformation. To inhibit SFKs, CSK is recruited to the plasma membrane via binding to transmembrane proteins or adapter proteins located near the plasma membrane. Suppresses signaling by various surface receptors, including T-cell receptor (TCR and B-cell receptor (BCR by phosphorylating and maintaining inactive several positive effectors such as FYN or LCK.,CSK,Signal Transduction,Kinase,Tyrosine kinases,Immunology & Inflammation,B Cell Receptor Signaling Pathway,CSK

Molecular Weight: 50kDa

Gene ID: 1445

UniProt: [P41240](#)

Pathways: [TCR Signaling](#), [EGFR Signaling Pathway](#), [Cell-Cell Junction Organization](#), [CXCR4-mediated Signaling Events](#)

## Application Details

Application Notes: WB,1:500 - 1:2000,IF,1:50 - 1:200

Restrictions: For Research Use only

## Handling

Format: Liquid

Buffer: PBS with 0.02 % sodium azide,50 % glycerol, pH 7.3.

Preservative: Sodium azide

Precaution of Use: This product contains Sodium azide: a POISONOUS AND HAZARDOUS SUBSTANCE which

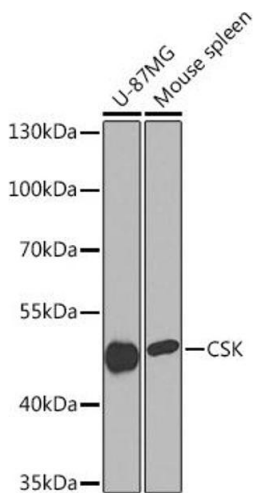
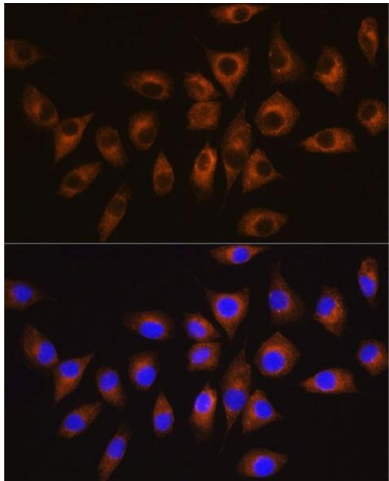
Handling

should be handled by trained staff only.

Storage: -20 °C

Storage Comment: Store at -20°C. Avoid freeze / thaw cycles.

Images



Western Blotting

**Image 1.** Western blot analysis of extracts of various cell lines, using CSK antibody (ABIN7265975) at 1:1000 dilution. Secondary antibody: HRP Goat Anti-Rabbit IgG (H+L) (ABIN1684268 and ABIN3020597) at 1:10000 dilution. Lysates/proteins: 25 µg per lane. Blocking buffer: 3 % nonfat dry milk in TBST. Detection: ECL Basic Kit (RM00020). Exposure time: 60s.

Western Blotting

**Image 2.** Western blot analysis of extracts of various cell lines, using CSK Rabbit pAb (ABIN7265975) at 1:1000 dilution. Secondary antibody: HRP Goat Anti-Rabbit IgG (H+L) (ABIN1684268 and ABIN3020597) at 1:10000 dilution. Lysates/proteins: 25 µg per lane. Blocking buffer: 3 % nonfat dry milk in TBST. Detection: ECL Basic Kit (RM00020). Exposure time: 90s.