



Datasheet for ABIN7265976

## anti-CTBP1 antibody



[Go to Product page](#)

### 2 Images

#### Overview

|              |   |
|--------------|---|
| Quantity:    | 100 µL  |
| Target:      | CTBP1   |
| Reactivity:  | Human   |
| Host:        | Rabbit  |
| Clonality:   | Monoclonal                                      |
| Conjugate:   | This CTBP1 antibody is un-conjugated            |
| Application: | Western Blotting (WB), Immunoprecipitation (IP) |

#### Product Details

|                   |  |
|-------------------|--|
| Purpose:          | CtBP1 Rabbit mAb                               |
| Immunogen:        | A synthesized peptide derived from human CtBP1 |
| Isotype:          | IgG  |
| Cross-Reactivity: | Human, Mouse, Rat                              |
| Characteristics:  | Monoclonal Antibodies                          |
| Purification:     | Affinity purification                          |

#### Target Details

|                   |   |
|-------------------|---|
| Target:           | CTBP1   |
| Alternative Name: | CTBP1 ( <a href="#">CTBP1 Products</a> )  |
| Background:       | This gene encodes a protein that binds to the C-terminus of adenovirus E1A proteins. This |

## Target Details

---

phosphoprotein is a transcriptional repressor and may play a role during cellular proliferation. This protein and the product of a second closely related gene, CTBP2, can dimerize. Both proteins can also interact with a polycomb group protein complex which participates in regulation of gene expression during development. Alternative splicing of transcripts from this gene results in multiple transcript variants. [provided by RefSeq, Jul 2008],BARS,Cancer,Cell Biology & Developmental Biology,Cell Cycle,Cell Cycle\_Cell cycle inhibitors,Epigenetics & Nuclear Signaling,Notch Signaling Pathway,CTBP1

---

Molecular Weight: 48kDa

---

Gene ID: 1487

---

UniProt: [Q13363](#)

---

Pathways: [Retinoic Acid Receptor Signaling Pathway](#)

## Application Details

---

Application Notes: WB,1:500 - 1:2000,IP,1:50 - 1:200

---

Restrictions: For Research Use only

## Handling

---

Format: Liquid

---

Buffer: PBS with 0.02 % sodium azide,0.05 % BSA,50 % glycerol, pH 7.3.

---

Preservative: Sodium azide

---

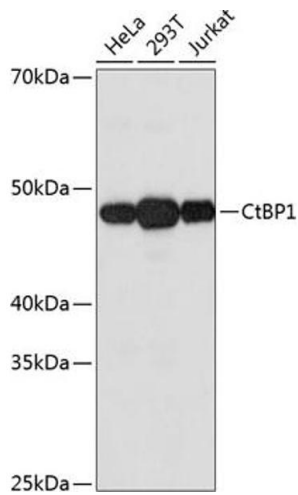
Precaution of Use: This product contains Sodium azide: a POISONOUS AND HAZARDOUS SUBSTANCE which should be handled by trained staff only.

---

Storage: -20 °C

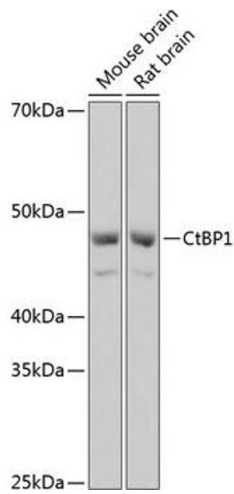
---

Storage Comment: Store at -20°C. Avoid freeze / thaw cycles.



### Western Blotting

**Image 1.** Western blot analysis of extracts of various cell lines, using CtBP1 Rabbit mAb (ABIN7265976) at 1:1000 dilution. Secondary antibody: HRP Goat Anti-Rabbit IgG (H+L) (ABIN1684268 and ABIN3020597) at 1:10000 dilution. Lysates/proteins: 25 µg per lane. Blocking buffer: 3 % nonfat dry milk in TBST. Detection: ECL Basic Kit (RM00020). Exposure time: 30s.



### Western Blotting

**Image 2.** Western blot analysis of extracts of various cell lines, using CtBP1 Rabbit mAb (ABIN7265976) at 1:1000 dilution. Secondary antibody: HRP Goat Anti-Rabbit IgG (H+L) (ABIN1684268 and ABIN3020597) at 1:10000 dilution. Lysates/proteins: 25 µg per lane. Blocking buffer: 3 % nonfat dry milk in TBST. Detection: ECL Basic Kit (RM00020). Exposure time: 3s.