

Datasheet for ABIN7265979

anti-CTBP2 antibody

7 Images

[Go to Product page](#)

Overview

Quantity:	100 µL
Target:	CTBP2
Reactivity:	Human
Host:	Rabbit
Clonality:	Monoclonal
Conjugate:	This CTBP2 antibody is un-conjugated
Application:	Western Blotting (WB), Immunohistochemistry (IHC), Immunofluorescence (IF), Immunoprecipitation (IP)

Product Details

Purpose:	CTBP2 Rabbit mAb
Immunogen:	A synthesized peptide derived from human CTBP2.
Isotype:	IgG
Cross-Reactivity:	Human, Mouse, Rat
Characteristics:	Monoclonal Antibodies
Purification:	Affinity purification

Target Details

Target:	CTBP2
Alternative Name:	CTBP2 (CTBP2 Products)

Target Details

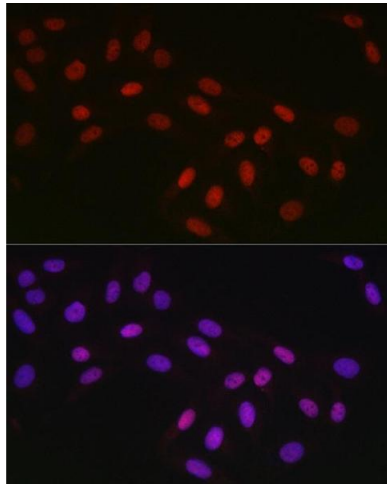
Background:	This gene produces alternative transcripts encoding two distinct proteins. One protein is a transcriptional repressor, while the other isoform is a major component of specialized synapses known as synaptic ribbons. Both proteins contain a NAD ⁺ binding domain similar to NAD ⁺ -dependent 2-hydroxyacid dehydrogenases. A portion of the 3' untranslated region was used to map this gene to chromosome 21q21.3, however, it was noted that similar loci elsewhere in the genome are likely. Blast analysis shows that this gene is present on chromosome 10. Several transcript variants encoding two different isoforms have been found for this gene.,CTBP2, C-terminal-binding protein 2,Epigenetics & Nuclear Signaling,Cell Biology & Developmental Biology,Notch Signaling Pathway,Neuroscience,Cell Type Marker,Neuron marker,Synapse marker,CTBP2
Molecular Weight:	47kDa
Gene ID:	1488
UniProt:	P56545

Application Details

Application Notes:	WB,1:500 - 1:2000,IHC,1:50 - 1:200,IF,1:50 - 1:200,IP,1:50 - 1:200
Restrictions:	For Research Use only

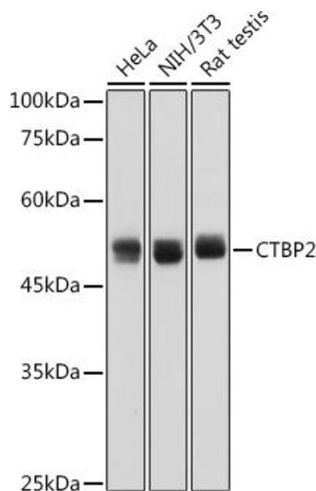
Handling

Format:	Liquid
Buffer:	PBS with 0.02 % sodium azide,0.05 % BSA,50 % glycerol, pH 7.3.
Preservative:	Sodium azide
Precaution of Use:	This product contains Sodium azide: a POISONOUS AND HAZARDOUS SUBSTANCE which should be handled by trained staff only.
Storage:	-20 °C
Storage Comment:	Store at -20°C. Avoid freeze / thaw cycles.



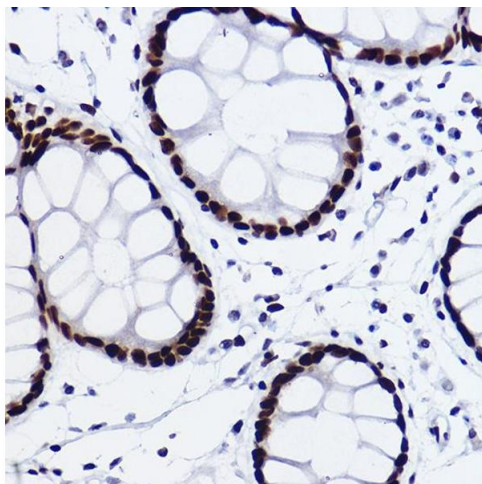
Immunofluorescence

Image 1. Immunofluorescence analysis of U2OS cells using CTBP2 Rabbit mAb (ABIN7265979) at dilution of 1:100 (40x lens). Blue: DAPI for nuclear staining.



Western Blotting

Image 2. Western blot analysis of extracts of various cell lines, using CTBP2 antibody (ABIN7265979) at 1:1000 dilution. Secondary antibody: HRP Goat Anti-Rabbit IgG (H+L) (ABIN1684268 and ABIN3020597) at 1:10000 dilution. Lysates/proteins: 25 µg per lane. Blocking buffer: 3 % nonfat dry milk in TBST. Detection: ECL Basic Kit (RM00020). Exposure time: 1s.



Immunohistochemistry

Image 3. Immunohistochemistry of paraffin-embedded human colon carcinoma using CTBP2 Rabbit mAb (ABIN7265979) at dilution of 1:100 (40x lens). Perform high pressure antigen retrieval with 10 mM citrate buffer pH 6.0 before commencing with IHC staining protocol.

Please check the [product details page](#) for more images. Overall 7 images are available for ABIN7265979.