



[Go to Product page](#)

Datasheet for ABIN7265985

## anti-C2CD5/KIAA0528 antibody (AA 732-1051)

### 1 Image

#### Overview

Quantity:	100 µL
Target:	C2CD5/KIAA0528 (C2CD5)
Binding Specificity:	AA 732-1051
Reactivity:	Human
Host:	Rabbit
Clonality:	Polyclonal
Conjugate:	This C2CD5/KIAA0528 antibody is un-conjugated
Application:	Western Blotting (WB), Immunohistochemistry (IHC)

#### Product Details

Purpose:	C2CD5 Rabbit pAb
Immunogen:	Recombinant fusion protein containing a sequence corresponding to amino acids 732-1051 of human C2CD5 (NP_001273103.1).
Sequence:	RLSSLNLTNQ ALNKNFNDLC ENLLKSLYFK LRSMIPCCLC HVNFTVSLPE DELIQVTVTA VAITFDKNQA LQTTKTPVEK SLQRASTDNE ELLQFPLELC SDSLPSHPFP PAKEHLESAS SNSGIPAAQR ATSVDYSSFA DRCSSWIELI KLKAQTIRRG SIKTTMTVEK ASPVGDGNFR NRSAPPCANS TVGVVKMTPL SFIPGAKITK YLGIINMFFI RETTSLREEG GVSGFLHAFI AEVFAMVRAH VAALGGNAV V SYIMKQCVFM ENPNKNQAQC LINVSGDAVV FVRES DLEV SSQQPTTNCQ SSCTEGEVTT
Isotype:	IgG
Cross-Reactivity:	Human, Mouse, Rat

## Product Details

---

Characteristics: Polyclonal Antibodies

Purification: Affinity purification

## Target Details

---

Target: C2CD5/KIAA0528 (C2CD5)

Alternative Name: C2CD5 ([C2CD5 Products](#))

Background: Required for insulin-stimulated glucose transport and glucose transporter SLC2A4/GLUT4 translocation from intracellular glucose storage vesicle (GSV to the plasma membrane (PM in adipocytes. Binds phospholipid membranes in a calcium-dependent manner and is necessary for the optimal membrane fusion between SLC2A4/GLUT4 GSV and the PM.,C2CD5,CDP138,KIAA0528,Signal Transduction,Cell Biology & Developmental Biology,C2CD5

Molecular Weight: 110kDa/114kDa/116kDa

Gene ID: 9847

UniProt: [Q86YS7](#)

## Application Details

---

Application Notes: WB,1:500 - 1:2000,IHC,1:50 - 1:100

Restrictions: For Research Use only

## Handling

---

Format: Liquid

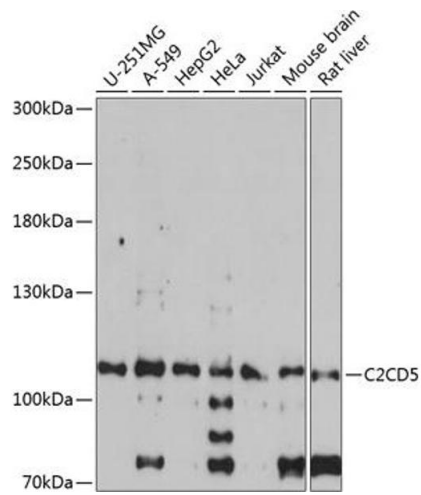
Buffer: PBS with 0.02 % sodium azide,50 % glycerol, pH 7.3.

Preservative: Sodium azide

Precaution of Use: This product contains Sodium azide: a POISONOUS AND HAZARDOUS SUBSTANCE which should be handled by trained staff only.

Storage: -20 °C

Storage Comment: Store at -20°C. Avoid freeze / thaw cycles.



### Western Blotting

**Image 1.** Western blot analysis of extracts of various cell lines, using C2CD5 antibody at 1:1000 dilution. Secondary antibody: HRP Goat Anti-Rabbit IgG (H+L) (ABIN1684268 and ABIN3020597) at 1:10000 dilution. Lysates/proteins: 25 µg per lane. Blocking buffer: 3% nonfat dry milk in TBST. Detection: ECL Basic Kit (RM00020). Exposure time: 90s.