

Datasheet for ABIN7265996  
**anti-Cadherin 13 antibody**[Go to Product page](#)

## 4 Images

## Overview

Quantity:	100 µL
Target:	Cadherin 13 (CDH13)
Reactivity:	Human
Host:	Rabbit
Clonality:	Monoclonal
Conjugate:	This Cadherin 13 antibody is un-conjugated
Application:	Western Blotting (WB), Immunohistochemistry (IHC)

## Product Details

Purpose:	Cadherin-13 (CDH13) Rabbit mAb
Immunogen:	A synthesized peptide derived from human Cadherin-13 (CDH13)
Isotype:	IgG
Cross-Reactivity:	Human, Mouse, Rat
Characteristics:	Monoclonal Antibodies
Purification:	Affinity purification

## Target Details

Target:	Cadherin 13 (CDH13)
Alternative Name:	CDH13 ( <a href="#">CDH13 Products</a> )
Background:	This gene encodes a member of the cadherin superfamily. The encoded protein is localized to

## Target Details

the surface of the cell membrane and is anchored by a GPI moiety, rather than by a transmembrane domain. The protein lacks the cytoplasmic domain characteristic of other cadherins, and so is not thought to be a cell-cell adhesion glycoprotein. This protein acts as a negative regulator of axon growth during neural differentiation. It also protects vascular endothelial cells from apoptosis due to oxidative stress, and is associated with resistance to atherosclerosis. The gene is hypermethylated in many types of cancer. Alternative splicing results in multiple transcript variants encoding different isoforms. [provided by RefSeq, May 2011],CDHH, P105,Calcium Signaling,Cancer,Cell Adhesion,Cell Adhesion\_Cadherins,Cell Biology & Developmental Biology,Cell Cycle,Cell Cycle\_Centrosome,Cytoskeleton,Invasion and Metastasis,Neuroscience,Signal Transduction,CDH13

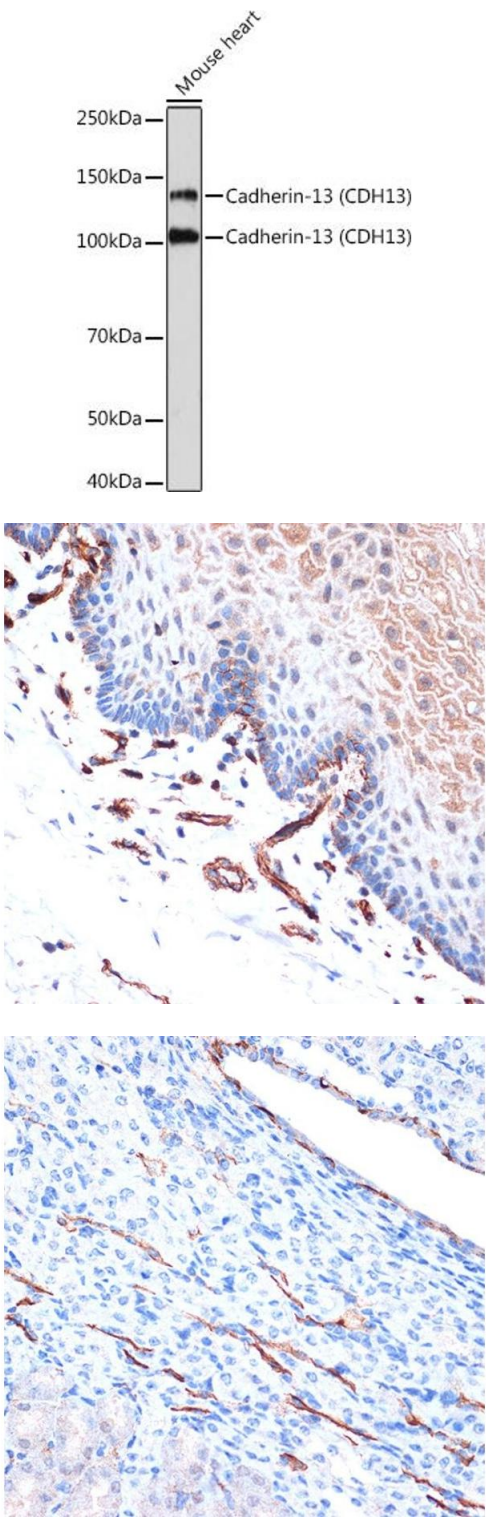
Molecular Weight:	105,130kDa
Gene ID:	1012
UniProt:	<a href="#">P55290</a>
Pathways:	<a href="#">EGFR Signaling Pathway</a> , <a href="#">Cell-Cell Junction Organization</a>

## Application Details

Application Notes:	WB,1:500 - 1:2000,IHC,1:50 - 1:200
Restrictions:	For Research Use only

## Handling

Format:	Liquid
Buffer:	PBS with 0.02 % sodium azide,0.05 % BSA,50 % glycerol, pH 7.3.
Preservative:	Sodium azide
Precaution of Use:	This product contains Sodium azide: a POISONOUS AND HAZARDOUS SUBSTANCE which should be handled by trained staff only.
Storage:	-20 °C
Storage Comment:	Store at -20°C. Avoid freeze / thaw cycles.



Western Blotting

**Image 1.** Western blot analysis of extracts of Mouse heart, using Cadherin-13 (CDH13) Rabbit mAb (ABIN7265996) at 1:1000 dilution. Secondary antibody: HRP Goat Anti-Rabbit IgG (H+L) (ABIN1684268 and ABIN3020597) at 1:10000 dilution. Lysates/proteins: 25 µg per lane. Blocking buffer: 3 % nonfat dry milk in TBST. Detection: ECL Basic Kit (RM00020). Exposure time: 3 min.

Immunohistochemistry

**Image 2.** Immunohistochemistry of paraffin-embedded human esophageal using Cadherin-13 (CDH13) Rabbit mAb (ABIN7265996) at dilution of 1:100 (40x lens). Perform microwave antigen retrieval with 10 mM Tris/EDTA buffer pH 9.0 before commencing with IHC staining protocol.

Immunohistochemistry

**Image 3.** Immunohistochemistry of paraffin-embedded mouse kidney using Cadherin-13 (CDH13) Rabbit mAb (ABIN7265996) at dilution of 1:100 (40x lens). Perform microwave antigen retrieval with 10 mM Tris/EDTA buffer pH 9.0 before commencing with IHC staining protocol.

Please check the [product details page](#) for more images. Overall 4 images are available for ABIN7265996.