



Datasheet for ABIN7265999  
**anti-N-Cadherin antibody**



[Go to Product page](#)

5 Images

Overview

Quantity:	100 µL
Target:	N-Cadherin (CDH2)
Reactivity:	Human
Host:	Rabbit
Clonality:	Monoclonal
Conjugate:	This N-Cadherin antibody is un-conjugated
Application:	Western Blotting (WB), Immunohistochemistry (IHC), Immunofluorescence (IF)

Product Details

Purpose:	[KO Validated] N-Cadherin Rabbit mAb
Immunogen:	A synthesized peptide derived from human N Cadherin
Isotype:	IgG
Cross-Reactivity:	Human, Mouse, Rat
Characteristics:	Monoclonal Antibodies
Purification:	Affinity purification
Grade:	KO Validated

Target Details

Target:	N-Cadherin (CDH2)
Alternative Name:	CDH2 ( <a href="#">CDH2 Products</a> )

## Target Details

---

**Background:** This gene encodes a classical cadherin and member of the cadherin superfamily. Alternative splicing results in multiple transcript variants, at least one of which encodes a preproprotein is proteolytically processed to generate a calcium-dependent cell adhesion molecule and glycoprotein. This protein plays a role in the establishment of left-right asymmetry, development of the nervous system and the formation of cartilage and bone. [provided by RefSeq, Nov 2015],CD325,CDHN,CDw325,NCAD,N Cadherin,CDH2,Cancer,CDs,Cell Adhesion,Cell Adhesion\_Cadherins,Cell Adhesion\_Tight Junctions,Cell Biology & Developmental Biology,Cell Cycle,Cell Cycle\_Centrosome,Cytoskeleton,Hematopoietic Progenitors,Immunology & Inflammation,Invasion and Metastasis,Signal Transduction,Stem Cells,Wnt/ $\beta$ -Catenin Signaling Pathway,CDH2

**Molecular Weight:** 140kDa

**Gene ID:** 1000

**UniProt:** [P19022](#)

**Pathways:** [Regulation of Muscle Cell Differentiation](#), [Cell-Cell Junction Organization](#), [Synaptic Membrane](#)

## Application Details

---

**Application Notes:** WB,1:500 - 1:2000,IHC,1:50 - 1:200,IF,1:50 - 1:200

**Restrictions:** For Research Use only

## Handling

---

**Format:** Liquid

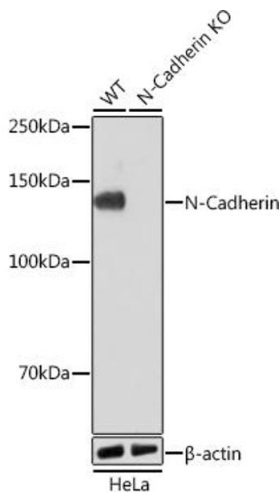
**Buffer:** PBS with 0.02 % sodium azide,0.05 % BSA,50 % glycerol, pH 7.3.

**Preservative:** Sodium azide

**Precaution of Use:** This product contains Sodium azide: a POISONOUS AND HAZARDOUS SUBSTANCE which should be handled by trained staff only.

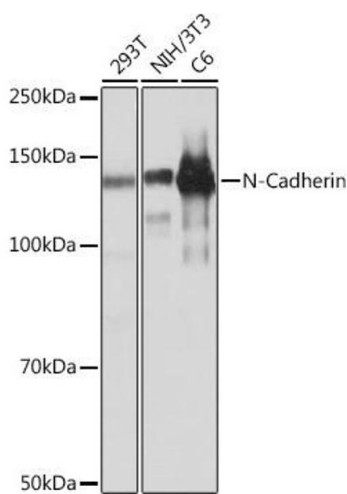
**Storage:** -20 °C

**Storage Comment:** Store at -20°C. Avoid freeze / thaw cycles.



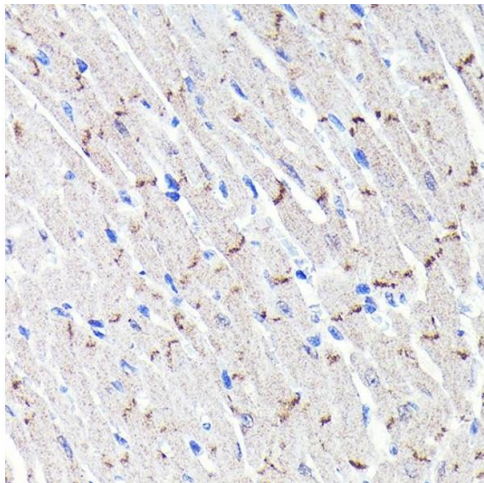
### Western Blotting

**Image 1.** Western blot analysis of extracts from wild type (WT) and N-Cadherin knockout (KO) HeLa cells, using N-Cadherin antibody (ABIN7265999) at 1:1000 dilution. Secondary antibody: HRP Goat Anti-Rabbit IgG (H+L) (ABIN1684268 and ABIN3020597) at 1:10000 dilution. Lysates/proteins: 25 µg per lane. Blocking buffer: 3 % nonfat dry milk in TBST. Detection: ECL Basic Kit (RM00020). Exposure time: 1 min.



### Western Blotting

**Image 2.** Western blot analysis of extracts of various cell lines, using N-Cadherin antibody (ABIN7265999) at 1:1000 dilution. Secondary antibody: HRP Goat Anti-Rabbit IgG (H+L) (ABIN1684268 and ABIN3020597) at 1:10000 dilution. Lysates/proteins: 25 µg per lane. Blocking buffer: 3 % nonfat dry milk in TBST. Detection: ECL Basic Kit (RM00020). Exposure time: 1 min.



### Immunohistochemistry

**Image 3.** Immunohistochemistry of paraffin-embedded mouse heart using N-Cadherin Rabbit mAb (ABIN7265999) at dilution of 1:100 (40x lens). Perform microwave antigen retrieval with 10 mM PBS buffer pH 7.2 before commencing with IHC staining protocol.

Please check the [product details page](#) for more images. Overall 5 images are available for ABIN7265999.