

Datasheet for ABIN7266015  
**anti-CACNA1H antibody (AA 260-360)**[Go to Product page](#)

## 2 Images

## Overview

Quantity:	100 µL
Target:	CACNA1H
Binding Specificity:	AA 260-360
Reactivity:	Human
Host:	Rabbit
Clonality:	Polyclonal
Application:	Western Blotting (WB), Immunofluorescence (IF)

## Product Details

Purpose:	CACNA1H Rabbit pAb
Immunogen:	Recombinant fusion protein containing a sequence corresponding to amino acids 260-360 of human CACNA1H (NP_066921.2).
Sequence:	CFLDSAFVRN NNLTFLRPYY QTEEGEENPF ICSSRRDNGM QKCSHIPGRR ELRMPCTLGW EAYTQPQAEG VGAARNACIN WNQYYNVCRS GDSNPHNGAI N
Isotype:	IgG
Cross-Reactivity:	Human, Mouse, Rat
Characteristics:	Polyclonal Antibodies
Purification:	Affinity purification

## Target Details

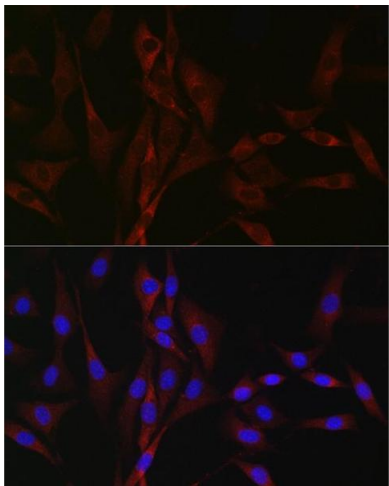
Target:	CACNA1H
Alternative Name:	CACNA1H ( <a href="#">CACNA1H Products</a> )
Background:	<p>This gene encodes a T-type member of the alpha-1 subunit family, a protein in the voltage-dependent calcium channel complex. Calcium channels mediate the influx of calcium ions into the cell upon membrane polarization and consist of a complex of alpha-1, alpha-2/delta, beta, and gamma subunits in a 1:1:1:1 ratio. The alpha-1 subunit has 24 transmembrane segments and forms the pore through which ions pass into the cell. There are multiple isoforms of each of the proteins in the complex, either encoded by different genes or the result of alternative splicing of transcripts. Alternate transcriptional splice variants, encoding different isoforms, have been characterized for the gene described here. Studies suggest certain mutations in this gene lead to childhood absence epilepsy</p> <p>(CAE).,CACNA1H,CACNA1HB,Cav3.2,ECA6,EIG6,HALD4,Signal Transduction,Neuroscience,Calcium Signaling,CACNA1H</p>
Molecular Weight:	258kDa/259kDa
Gene ID:	8912
UniProt:	<a href="#">O95180</a>
Pathways:	<a href="#">C21-Steroid Hormone Metabolic Process</a>

## Application Details

Application Notes:	WB,1:500 - 1:2000,IF,1:50 - 1:200
Restrictions:	For Research Use only

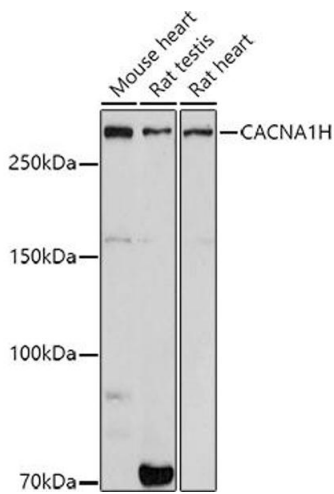
## Handling

Format:	Liquid
Buffer:	PBS with 0.02 % sodium azide,50 % glycerol, pH 7.3.
Preservative:	Sodium azide
Precaution of Use:	This product contains Sodium azide: a POISONOUS AND HAZARDOUS SUBSTANCE which should be handled by trained staff only.
Storage:	-20 °C
Storage Comment:	Store at -20°C. Avoid freeze / thaw cycles.



### Immunofluorescence

**Image 1.** Immunofluorescence analysis of NIH/3T3 cells using CH Rabbit pAb (ABIN7266015) at dilution of 1:100 (40x lens). Blue: DAPI for nuclear staining.



### Western Blotting

**Image 2.** Western blot analysis of extracts of various cell lines, using CH antibody (ABIN7266015) at 1:1000 dilution. Secondary antibody: HRP Goat Anti-Rabbit IgG (H+L) (ABIN1684268 and ABIN3020597) at 1:10000 dilution. Lysates/proteins: 25 µg per lane. Blocking buffer: 3 % nonfat dry milk in TBST. Detection: ECL Basic Kit (RM00020). Exposure time: 180s.