

Datasheet for ABIN7266033

anti-CAPNL1 antibody**3** Images[Go to Product page](#)

Overview

| | |
|--------------|--|
| Quantity: | 100 µL |
| Target: | CAPNL1 |
| Reactivity: | Human |
| Host: | Rabbit |
| Clonality: | Monoclonal |
| Conjugate: | This CAPNL1 antibody is un-conjugated |
| Application: | Western Blotting (WB), Immunofluorescence (IF) |

Product Details

| | |
|-------------------|--|
| Purpose: | Calpain 1 Rabbit mAb |
| Immunogen: | A synthesized peptide derived from human Calpain 1 |
| Isotype: | IgG |
| Cross-Reactivity: | Human, Mouse, Rat |
| Characteristics: | Monoclonal Antibodies |
| Purification: | Affinity purification |

Target Details

| | |
|-------------------|---|
| Target: | CAPNL1 |
| Alternative Name: | CAPN1 (CAPNL1 Products) |
| Background: | The calpains, calcium-activated neutral proteases, are nonlysosomal, intracellular cysteine |

Target Details

proteases. The mammalian calpains include ubiquitous, stomach-specific, and muscle-specific proteins. The ubiquitous enzymes consist of heterodimers with distinct large, catalytic subunits associated with a common small, regulatory subunit. This gene encodes the large subunit of the ubiquitous enzyme, calpain 1. Several transcript variants encoding two different isoforms have been found for this gene. [provided by RefSeq, Nov 2010],CANP, CANP1, CANPL1, SPG76, muCANP, muCL,Apoptosis,Calcium Signaling,Cell Biology & Developmental Biology,Immunology & Inflammation,Neurodegenerative Diseases,Neurodegenerative Diseases_Amyloid Plaque and Neurofibrillary Tangle Formation in Alzheimers Disease,Neuroscience,Signal Transduction,T Cell Receptor Signaling Pathway,Ubiquitin,CAPN1

Molecular Weight: 75,80kDa

Gene ID: 823

UniProt: [P07384](#)

Pathways: [Apoptosis](#)

Application Details

Application Notes: WB,1:500 - 1:2000,IF,1:50 - 1:200

Restrictions: For Research Use only

Handling

Format: Liquid

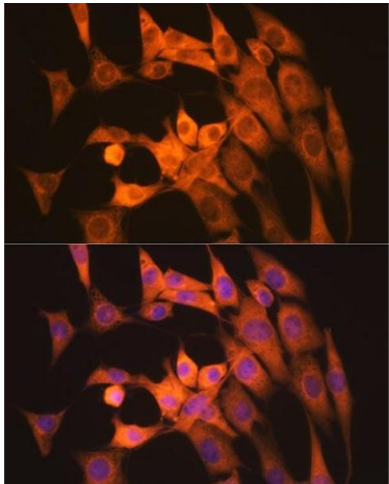
Buffer: PBS with 0.02 % sodium azide,0.05 % BSA,50 % glycerol, pH 7.3.

Preservative: Sodium azide

Precaution of Use: This product contains Sodium azide: a POISONOUS AND HAZARDOUS SUBSTANCE which should be handled by trained staff only.

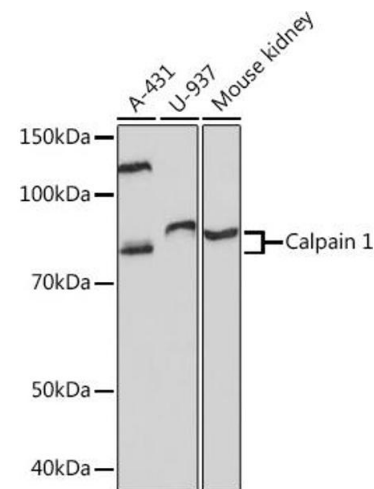
Storage: -20 °C

Storage Comment: Store at -20°C. Avoid freeze / thaw cycles.



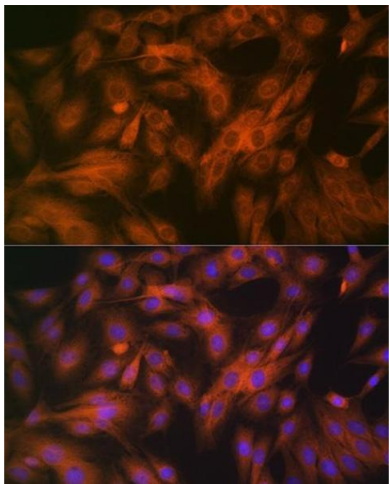
Immunofluorescence

Image 1. Immunofluorescence analysis of NIH-3T3 cells using Calpain 1 Rabbit mAb (ABIN7266033) at dilution of 1:100 (40x lens). Blue: DAPI for nuclear staining.



Western Blotting

Image 2. Western blot analysis of extracts of various cell lines, using Calpain 1 Rabbit mAb (ABIN7266033) at 1:1000 dilution. Secondary antibody: HRP Goat Anti-Rabbit IgG (H+L) (ABIN1684268 and ABIN3020597) at 1:10000 dilution. Lysates/proteins: 25 µg per lane. Blocking buffer: 3 % nonfat dry milk in TBST. Detection: ECL Basic Kit (RM00020). Exposure time: 3 min.



Immunofluorescence

Image 3. Immunofluorescence analysis of C6 cells using Calpain 1 Rabbit mAb (ABIN7266033) at dilution of 1:100 (40x lens). Blue: DAPI for nuclear staining.