

Datasheet for ABIN7266037
anti-Calpastatin antibody (AA 1-350)



[Go to Product page](#)

3 Images

Overview

Quantity:	100 µL
Target:	Calpastatin (CAST)
Binding Specificity:	AA 1-350
Reactivity:	Human
Host:	Rabbit
Clonality:	Polyclonal
Conjugate:	This Calpastatin antibody is un-conjugated
Application:	Western Blotting (WB), Immunohistochemistry (IHC)

Product Details

Purpose:	CAST Rabbit pAb
Immunogen:	Recombinant fusion protein containing a sequence corresponding to amino acids 1-350 of human CAST (NP_001177371.1).
Sequence:	MNPTETKAIP VSQQMEGPHL PNKKKHKKQA VKTEPEKKSQ STKLSVVHEK KSQEGKPKEH TEPKSLPKQA SDTGSNDAH N KKA VSRSAEQ QPSEKSTEPK TKPQDMISAG GESVAGITAI SGKPGDKKKE KKS LTPAVPV ESKPDKPSGK SGMDAALDDL IDTLGGPEET EEENTTYTGP EVSDPMSSTY IEELGKREVT IPPKYRELLA KPIGPDDAID ALSSDFTCGS PTAAGKKTEK EESTEVLKAQ SAGTVRSAAP PQEKRRKVEK DTMSDQALEA LSASLGTRQA EPELDLRSIK EVDEAKAKEE KLEKCGEDDE TIPSEYRLKP ATDKD GKPLL PEPEEKPKPR
Isotype:	IgG
Cross-Reactivity:	Human

Product Details

Characteristics: Polyclonal Antibodies

Purification: Affinity purification

Target Details

Target: Calpastatin (CAST)

Alternative Name: CAST ([CAST Products](#))

Background: The protein encoded by this gene is an endogenous calpain (calcium-dependent cysteine protease) inhibitor. It consists of an N-terminal domain L and four repetitive calpain-inhibition domains (domains 1-4), and it is involved in the proteolysis of amyloid precursor protein. The calpain/calpastatin system is involved in numerous membrane fusion events, such as neural vesicle exocytosis and platelet and red-cell aggregation. The encoded protein is also thought to affect the expression levels of genes encoding structural or regulatory proteins. Alternatively spliced transcript variants encoding different isoforms have been described.,CAST,BS-17,PLACK,Epigenetics & Nuclear Signaling,RNA Binding,Cell Biology & Developmental Biology,Ubiquitin,Neuroscience,Cell Type Marker,Neurodegenerative Diseases,Amyloid Plaque and Neurofibrillary Tangle Formation in Alzheimer's Disease,Neuron marker,Synapse marker,CAST

Molecular Weight: 63kDa/71- 84kDa

Gene ID: 831

UniProt: [P20810](#)

Application Details

Application Notes: WB,1:500 - 1:2000,IHC,1:50 - 1:200

Restrictions: For Research Use only

Handling

Format: Liquid

Buffer: PBS with 0.02 % sodium azide,50 % glycerol, pH 7.3.

Preservative: Sodium azide

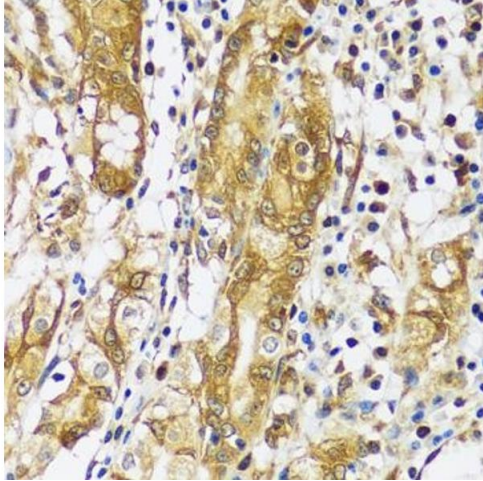
Precaution of Use: This product contains Sodium azide: a POISONOUS AND HAZARDOUS SUBSTANCE which should be handled by trained staff only.

Handling

Storage: -20 °C

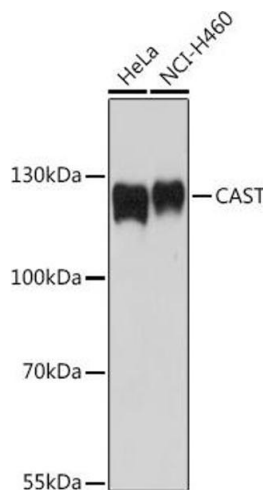
Storage Comment: Store at -20°C. Avoid freeze / thaw cycles.

Images



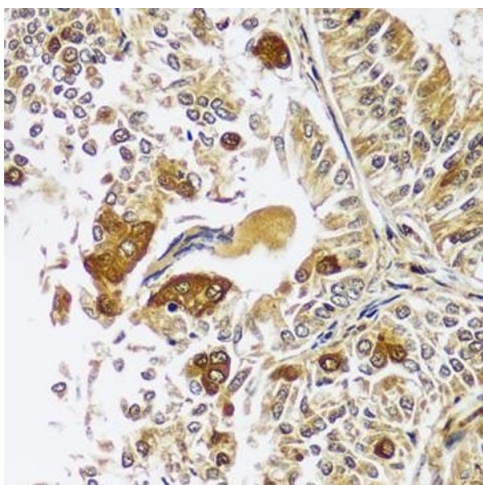
Immunohistochemistry

Image 1. Immunohistochemistry of paraffin-embedded human stomach using CAST antibody at dilution of 1:100 (40x lens). Perform microwave antigen retrieval with 10 mM PBS buffer pH 7.2 before commencing with IHC staining protocol.



Western Blotting

Image 2. Western blot analysis of extracts of various cell lines, using CAST antibody at 1:1000 dilution. Secondary antibody: HRP Goat Anti-Rabbit IgG (H+L) (ABIN1684268 and ABIN3020597) at 1:10000 dilution. Lysates/proteins: 25 µg per lane. Blocking buffer: 3% nonfat dry milk in TBST. Detection: ECL Basic Kit (RM00020). Exposure time: 90s.



Immunohistochemistry

Image 3. Immunohistochemistry of paraffin-embedded human uterine cancer using CAST antibody at dilution of 1:100 (40x lens). Perform microwave antigen retrieval with 10 mM PBS buffer pH 7.2 before commencing with IHC staining protocol.