



[Go to Product page](#)

Datasheet for ABIN7266051
anti-CAMKV antibody (AA 1-285)

4 Images

Overview

| | |
|----------------------|--|
| Quantity: | 100 µL |
| Target: | CAMKV |
| Binding Specificity: | AA 1-285 |
| Reactivity: | Human |
| Host: | Rabbit |
| Clonality: | Polyclonal |
| Conjugate: | This CAMKV antibody is un-conjugated |
| Application: | Western Blotting (WB), Immunofluorescence (IF) |

Product Details

| | |
|-------------------|--|
| Purpose: | CAMKV Rabbit pAb |
| Immunogen: | Recombinant fusion protein containing a sequence corresponding to amino acids 1-285 of human CAMKV (NP_076951.2). |
| Sequence: | MPFGCVTLGD KKNYNQPSEV TDRYDLGQVI KTEEFCEIFR AKDKTTGKLH TCKKFQKRDG RKVRKAAKNE IGILKMKVHP NILQLVDV FV TRKEYFIFLE LATGREVFDW ILDQGYYSER DTSNVVRQVL EAVAYLHSLK IVHRNLKLEN LVYYNRLKNS KIVISDFHLA KLENGLIKEP CGTPEYL APE VVGRQRYGRP VDCWAIGVIM YILLSGNPPF YEEVEEDDYE NHDKNLFRKI LAGDYEFDSP YWDDISQAAK DLVTRLMEVE QDQRITAE EA ISHEW |
| Isotype: | IgG |
| Cross-Reactivity: | Human, Mouse, Rat |
| Characteristics: | Polyclonal Antibodies |

Product Details

Purification: Affinity purification

Target Details

Target: CAMKV

Alternative Name: CAMKV ([CAMKV Products](#))

Background: Does not appear to have detectable kinase activity.,CAMKV,1G5,VACAMKL,Signal Transduction,Neuroscience,Calcium Signaling,CAMKV

Molecular Weight: 51kDa/54kDa

Gene ID: 79012

UniProt: [Q8NCB2](#)

Application Details

Application Notes: WB,1:500 - 1:2000,IF,1:50 - 1:200

Restrictions: For Research Use only

Handling

Format: Liquid

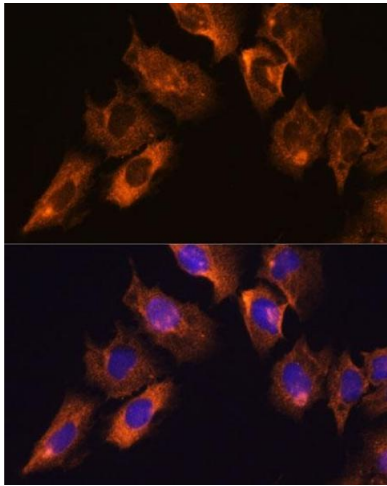
Buffer: PBS with 0.02 % sodium azide,50 % glycerol, pH 7.3.

Preservative: Sodium azide

Precaution of Use: This product contains Sodium azide: a POISONOUS AND HAZARDOUS SUBSTANCE which should be handled by trained staff only.

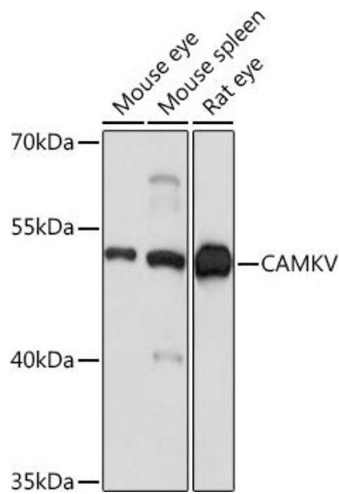
Storage: -20 °C

Storage Comment: Store at -20°C. Avoid freeze / thaw cycles.



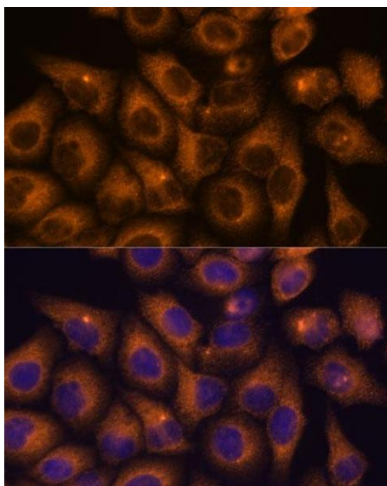
Immunofluorescence

Image 1. Immunofluorescence analysis of C6 cells using CAMKV antibody (ABIN7266051) at dilution of 1:100. Blue: DAPI for nuclear staining.



Western Blotting

Image 2. Western blot analysis of extracts of various cell lines, using CAMKV Rabbit pAb (ABIN7266051) at 1:1000 dilution. Secondary antibody: HRP Goat Anti-Rabbit IgG (H+L) (ABIN1684268 and ABIN3020597) at 1:10000 dilution. Lysates/proteins: 25 µg per lane. Blocking buffer: 3 % nonfat dry milk in TBST. Detection: ECL Basic Kit (RM00020). Exposure time: 1s.



Immunofluorescence

Image 3. Immunofluorescence analysis of HeLa cells using CAMKV antibody (ABIN7266051) at dilution of 1:100. Blue: DAPI for nuclear staining.

Please check the [product details page](#) for more images. Overall 4 images are available for ABIN7266051.