



[Go to Product page](#)

Datasheet for ABIN7266066
anti-CHST5 antibody (AA 232-411)

1 Image

Overview

Quantity:	100 µL
Target:	CHST5
Binding Specificity:	AA 232-411
Reactivity:	Human
Host:	Rabbit
Clonality:	Polyclonal
Conjugate:	This CHST5 antibody is un-conjugated
Application:	Western Blotting (WB)

Product Details

Purpose:	CHST5 Rabbit pAb
Immunogen:	Recombinant fusion protein containing a sequence corresponding to amino acids 232-411 of human CHST5 (NP_078809.2).
Sequence:	SREAAGPILA RDNGIVLGTN GKWVEADPHL RLIREVCRSH VRIAEATLK PPPFLRGRYR LVRFEDLARE PLAEIRALYA FTGLTLTPQL EAWIHNITHG SGIGKPIEAF HTSSRNARNV SQAWRHALPF TKILRVQEVG AGALQLLGYR PVYSADQQRD LTLDLVLPRG PDHFSWASPD
Isotype:	IgG
Cross-Reactivity:	Human
Characteristics:	Polyclonal Antibodies
Purification:	Affinity purification

Target Details

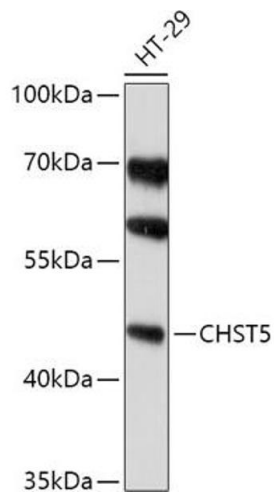
Target:	CHST5
Alternative Name:	CHST5 (CHST5 Products)
Background:	<p>The protein encoded by this gene belongs to the Gal/GalNAc/GlcNAc 6-O-sulfotransferase (GST) family, members of which catalyze the transfer of sulfate to position 6 of galactose (Gal), N-acetylgalactosamine (GalNAc), or N-acetylglucosamine (GlcNAc) residues within proteoglycans, and sulfation of O-linked sugars of mucin-type acceptors. Carbohydrate sulfation plays a critical role in many biologic processes. This gene is predominantly expressed in colon and small intestine. [provided by RefSeq, Aug 2011],I-GlcNAc-6-ST,I-GlcNAc6ST,glcNAc6ST-3,gn6st-3,hIGn6ST,CHST5,Signal Transduction,Cell Biology & Developmental Biology,Cytoskeleton,Extracellular Matrix,Endocrine & Metabolism,Neuroscience,CHST5</p>
Gene ID:	23563
UniProt:	Q9GZS9
Pathways:	Glycosaminoglycan Metabolic Process

Application Details

Application Notes:	WB,1:500 - 1:2000
Restrictions:	For Research Use only

Handling

Format:	Liquid
Buffer:	PBS with 0.02 % sodium azide,50 % glycerol, pH 7.3.
Preservative:	Sodium azide
Precaution of Use:	This product contains Sodium azide: a POISONOUS AND HAZARDOUS SUBSTANCE which should be handled by trained staff only.
Storage:	-20 °C
Storage Comment:	Store at -20°C. Avoid freeze / thaw cycles.



Western Blotting

Image 1. Western blot analysis of extracts of HT-29 cells, using CHST5 antibody (ABIN7266066) at 1:1000 dilution. Secondary antibody: HRP Goat Anti-Rabbit IgG (H+L) (ABIN1684268 and ABIN3020597) at 1:10000 dilution. Lysates/proteins: 25 µg per lane. Blocking buffer: 3 % nonfat dry milk in TBST. Detection: ECL Basic Kit (RM00020). Exposure time: 10s.