

Datasheet for ABIN7266080
anti-CPA4 antibody (AA 114-280)[Go to Product page](#)

1 Image

Overview

Quantity:	100 µL
Target:	CPA4
Binding Specificity:	AA 114-280
Reactivity:	Human
Host:	Rabbit
Clonality:	Polyclonal
Conjugate:	This CPA4 antibody is un-conjugated
Application:	Western Blotting (WB)

Product Details

Purpose:	CPA4 Rabbit pAb
Immunogen:	Recombinant fusion protein containing a sequence corresponding to amino acids 114-280 of human CPA4 (NP_057436.2).
Sequence:	SSNNFNYGAY HSLEAIYHEM DNIAADFPDL ARRVKIGHSF ENRPMYVLKF STGKGVRRPA VWLNAGIHSR EWISQATAIW TARKIVSDYQ RDPATSILE KMDIFLLPVA NPDGYVYTQT QNRLWRKTRS RNP GSSCIGA DPNRNWNASF AGKGASDNPC SEVYHGP
Isotype:	IgG
Cross-Reactivity:	Human, Mouse, Rat
Characteristics:	Polyclonal Antibodies
Purification:	Affinity purification

Target Details

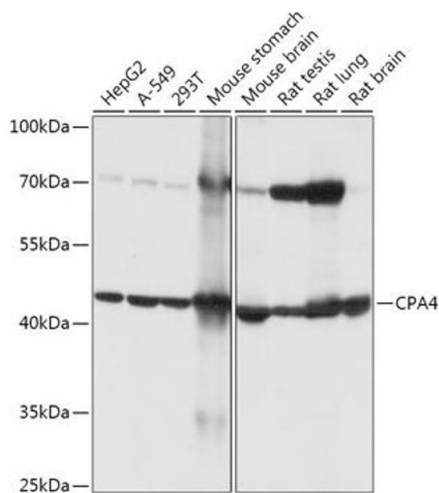
Target:	CPA4
Alternative Name:	CPA4 (CPA4 Products)
Background:	This gene is a member of the carboxypeptidase A/B subfamily, and it is located in a cluster with three other family members on chromosome 7. Carboxypeptidases are zinc-containing exopeptidases that catalyze the release of carboxy-terminal amino acids, and are synthesized as zymogens that are activated by proteolytic cleavage. This gene could be involved in the histone hyperacetylation pathway. It is imprinted and may be a strong candidate gene for prostate cancer aggressiveness. [provided by RefSeq, Jul 2008],CPA3,CPA4,Cell Biology & Developmental Biology,Ubiquitin,CPA4
Gene ID:	51200
UniProt:	Q9UI42

Application Details

Application Notes:	WB,1:500 - 1:2000
Restrictions:	For Research Use only

Handling

Format:	Liquid
Buffer:	PBS with 0.02 % sodium azide,50 % glycerol, pH 7.3.
Preservative:	Sodium azide
Precaution of Use:	This product contains Sodium azide: a POISONOUS AND HAZARDOUS SUBSTANCE which should be handled by trained staff only.
Storage:	-20 °C
Storage Comment:	Store at -20°C. Avoid freeze / thaw cycles.



Western Blotting

Image 1. Western blot analysis of extracts of various cell lines, using CP antibody (ABIN7266080) at 1:1000 dilution. Secondary antibody: HRP Goat Anti-Rabbit IgG (H+L) (ABIN1684268 and ABIN3020597) at 1:10000 dilution. Lysates/proteins: 25 µg per lane. Blocking buffer: 3 % nonfat dry milk in TBST. Detection: ECL Basic Kit (RM00020). Exposure time: 5s.