

Datasheet for ABIN7266081  
**anti-CPB2 antibody (AA 310-410)**[Go to Product page](#)

## 1 Image

## Overview

Quantity:	100 µL
Target:	CPB2
Binding Specificity:	AA 310-410
Reactivity:	Human
Host:	Rabbit
Clonality:	Polyclonal
Conjugate:	This CPB2 antibody is un-conjugated
Application:	Western Blotting (WB)

## Product Details

Purpose:	CPB2 Rabbit pAb
Immunogen:	Recombinant fusion protein containing a sequence corresponding to amino acids 310-410 of human CPB2 (NP_001863.3).
Sequence:	HSYSQHIVFP YSYTRSKSKD HEELSLVASE AVRAIEKISK NTRYTHGHGS ETLYLAPGGG DDWIYDLGIK YSFTIELRDT GTYGFLPER YIKPTCREAF A
Isotype:	IgG
Cross-Reactivity:	Rat
Characteristics:	Polyclonal Antibodies
Purification:	Affinity purification

## Target Details

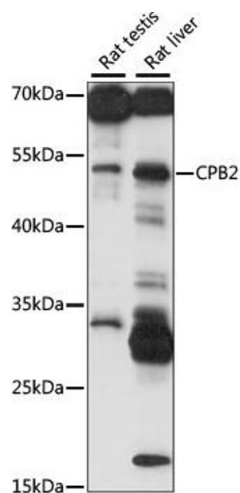
Target:	CPB2
Alternative Name:	CPB2 ( <a href="#">CPB2 Products</a> )
Background:	Carboxypeptidases are enzymes that hydrolyze C-terminal peptide bonds. The carboxypeptidase family includes metallo-, serine, and cysteine carboxypeptidases. According to their substrate specificity, these enzymes are referred to as carboxypeptidase A (cleaving aliphatic residues) or carboxypeptidase B (cleaving basic amino residues). The protein encoded by this gene is activated by trypsin and acts on carboxypeptidase B substrates. After thrombin activation, the mature protein downregulates fibrinolysis. Polymorphisms have been described for this gene and its promoter region. Alternate splicing results in multiple transcript variants.,CPB2,CPU,PCPB,TAFI,Cancer,Signal Transduction,Endocrine & Metabolism,Amino acid metabolism,Cardiovascular,Blood,Coagulation,Serum Proteins,Heart,Cardiovascular diseases,Heart disease,CPB2
Molecular Weight:	40kDa/48kDa
Gene ID:	1361
UniProt:	<a href="#">Q96IY4</a>
Pathways:	<a href="#">Regulation of Actin Filament Polymerization</a> , <a href="#">Carbohydrate Homeostasis</a>

## Application Details

Application Notes:	WB,1:200 - 1:2000
Restrictions:	For Research Use only

## Handling

Format:	Liquid
Buffer:	PBS with 0.02 % sodium azide,50 % glycerol, pH 7.3.
Preservative:	Sodium azide
Precaution of Use:	This product contains Sodium azide: a POISONOUS AND HAZARDOUS SUBSTANCE which should be handled by trained staff only.
Storage:	-20 °C
Storage Comment:	Store at -20°C. Avoid freeze / thaw cycles.



### Western Blotting

**Image 1.** Western blot analysis of extracts of various cell lines, using CPB2 antibody (ABIN7266081) at 1:1000 dilution. Secondary antibody: HRP Goat Anti-Rabbit IgG (H+L) (ABIN1684268 and ABIN3020597) at 1:10000 dilution. Lysates/proteins: 25 µg per lane. Blocking buffer: 3 % nonfat dry milk in TBST. Detection: ECL Basic Kit (RM00020). Exposure time: 10S.