

Datasheet for ABIN7266089
anti-CPT1A antibody (AA 497-756)[Go to Product page](#)

2 Images

Overview

Quantity:	100 µL
Target:	CPT1A
Binding Specificity:	AA 497-756
Reactivity:	Human
Host:	Rabbit
Clonality:	Monoclonal
Conjugate:	This CPT1A antibody is un-conjugated
Application:	Western Blotting (WB)

Product Details

Purpose:	CPT1A Rabbit mAb
Immunogen:	Recombinant fusion protein containing a sequence corresponding to amino acids 497-756 of human CPT1A (NP_001027017.1).
Isotype:	IgG
Cross-Reactivity:	Human, Mouse, Rat
Characteristics:	Monoclonal Antibodies
Purification:	Affinity purification

Target Details

Target:	CPT1A
---------	-------

Target Details

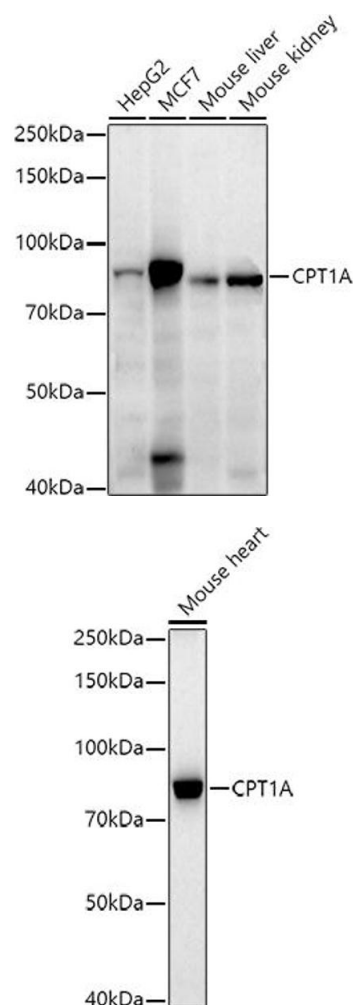
Alternative Name:	CPT1A (CPT1A Products)
Background:	The mitochondrial oxidation of long-chain fatty acids is initiated by the sequential action of carnitine palmitoyltransferase I (which is located in the outer membrane and is detergent-labile) and carnitine palmitoyltransferase II (which is located in the inner membrane and is detergent-stable), together with a carnitine-acylcarnitine translocase. CPT I is the key enzyme in the carnitine-dependent transport across the mitochondrial inner membrane and its deficiency results in a decreased rate of fatty acid beta-oxidation. Alternatively spliced transcript variants encoding different isoforms have been found for this gene.,CPT1A,CPT1,CPT1-L,L-CPT1,Cancer,Signal Transduction,Endocrine & Metabolism,Mitochondrial metabolism,Mitochondrial markers,Lipid Metabolism,AMPK Signaling Pathway,Endocrine and metabolic diseases,Obesity,Cardiovascular,Lipids,Fatty Acids,CPT1A
Molecular Weight:	86kDa/88kDa
Gene ID:	1374
UniProt:	P50416
Pathways:	AMPK Signaling , Regulation of Lipid Metabolism by PPARalpha , Feeding Behaviour , Monocarboxylic Acid Catabolic Process

Application Details

Application Notes:	WB,1:500 - 1:2000
Restrictions:	For Research Use only

Handling

Format:	Liquid
Buffer:	PBS with 0.02 % sodium azide,50 % glycerol, pH 7.3.
Preservative:	Sodium azide
Precaution of Use:	This product contains Sodium azide: a POISONOUS AND HAZARDOUS SUBSTANCE which should be handled by trained staff only.
Storage:	-20 °C
Storage Comment:	Store at -20°C. Avoid freeze / thaw cycles.



Western Blotting

Image 1. Western blot analysis of extracts of various cell lines, using CPT1A antibody (ABIN7266089) at 1:1000 dilution. Secondary antibody: HRP Goat Anti-Rabbit IgG (H+L) (ABIN1684268 and ABIN3020597) at 1:10000 dilution. Lysates/proteins: 25 µg per lane. Blocking buffer: 3 % nonfat dry milk in TBST. Detection: ECL Enhanced Kit (RM00021). Exposure time: 180s.

Western Blotting

Image 2. Western blot analysis of extracts of Mouse heart, using CPT1A antibody (ABIN7266089) at 1:1000 dilution. Secondary antibody: HRP Goat Anti-Rabbit IgG (H+L) (ABIN1684268 and ABIN3020597) at 1:10000 dilution. Lysates/proteins: 25 µg per lane. Blocking buffer: 3 % nonfat dry milk in TBST. Detection: ECL Basic Kit (RM00020). Exposure time: 180s.