



[Go to Product page](#)

Datasheet for ABIN7266105
anti-CSNK2B antibody (AA 1-215)

4 Images

Overview

Quantity:	100 µL
Target:	CSNK2B
Binding Specificity:	AA 1-215
Reactivity:	Human
Host:	Rabbit
Clonality:	Polyclonal
Conjugate:	This CSNK2B antibody is un-conjugated
Application:	Western Blotting (WB), Immunohistochemistry (IHC)

Product Details

Purpose:	Casein Kinase 2 beta (CSNK2B) Rabbit pAb
Immunogen:	Recombinant fusion protein containing a sequence corresponding to amino acids 1-215 of human Casein Kinase 2 beta (Casein Kinase 2 beta (CSNK2B)) (NP_001311.3).
Sequence:	MSSSEEVSWI SWFCGLRGNE FFCEVDEDYI QDKFNLTGLN EQVPHYRQAL DMILDLEPDE ELEDNPNQSD LIEQAAEMLY GLIHARYILT NRGIAQMLEK YQQGDFGYCP RVYCENQPML PIGLSDIPGE AMVKLYCPKC MDVYTPKSSR HHHTDGAYFG TGFPHMLFMV HPEYRPKRPA NQFVPRLYGF KIHPMAYQLQ LQAASNFKSP VKTIR
Isotype:	IgG
Cross-Reactivity:	Human, Mouse, Rat
Characteristics:	Polyclonal Antibodies

Product Details

Purification: Affinity purification

Target Details

Target: CSNK2B

Alternative Name: CSNK2B ([CSNK2B Products](#))

Background: This gene encodes the beta subunit of casein kinase II, a ubiquitous protein kinase which regulates metabolic pathways, signal transduction, transcription, translation, and replication. The enzyme is composed of three subunits, alpha, alpha prime and beta, which form a tetrameric holoenzyme. The alpha and alpha prime subunits are catalytic, while the beta subunit serves regulatory functions. The enzyme localizes to the endoplasmic reticulum and the Golgi apparatus. Two transcript variants encoding different isoforms have been found for this gene. [provided by RefSeq, Sep 2013],CK2B,CK2N,CSK2B,G5A,CSNK2B,Ckb1,Ckb2,Signal Transduction,Kinase,Cell Biology & Developmental Biology,Cell Cycle,Stem Cells,CSNK2B

Molecular Weight: 24kDa

Gene ID: 1460

UniProt: [P67870](#)

Pathways: [SARS-CoV-2 Protein Interactome](#)

Application Details

Application Notes: WB,1:500 - 1:2000,IHC,1:50 - 1:200

Restrictions: For Research Use only

Handling

Format: Liquid

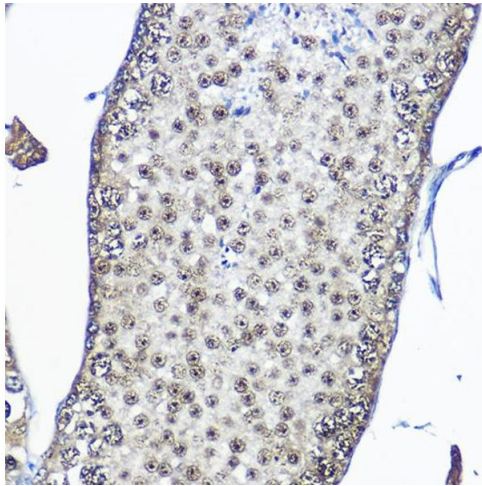
Buffer: PBS with 0.02 % sodium azide,50 % glycerol, pH 7.3.

Preservative: Sodium azide

Precaution of Use: This product contains Sodium azide: a POISONOUS AND HAZARDOUS SUBSTANCE which should be handled by trained staff only.

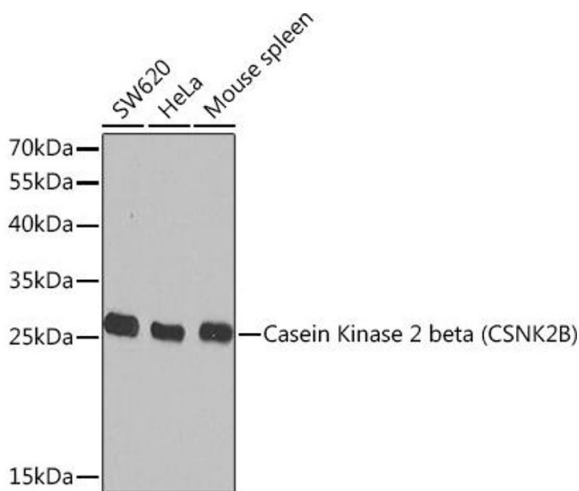
Storage: -20 °C

Storage Comment: Store at -20°C. Avoid freeze / thaw cycles.



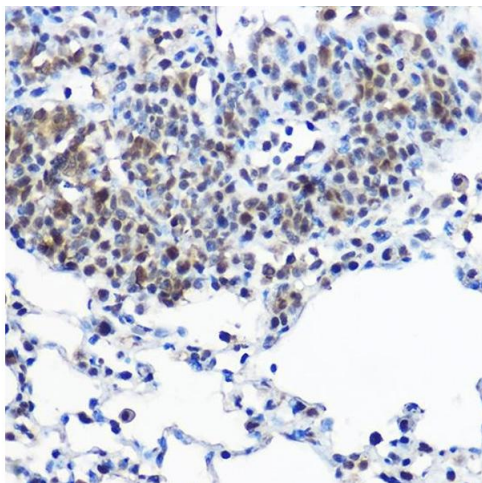
Immunohistochemistry

Image 1. Immunohistochemistry of paraffin-embedded mouse testis using Casein Kinase 2 beta (Casein Kinase 2 beta (CSNK2B)) Rabbit pAb at dilution of 1:100 (40x lens). Perform high pressure antigen retrieval with 10 mM citrate buffer pH 6.0 before commencing with IHC staining protocol.



Western Blotting

Image 2. Western blot analysis of extracts of various cell lines, using Casein Kinase 2 beta (Casein Kinase 2 beta (CSNK2B)) Rabbit pAb at 1:1000 dilution. Secondary antibody: HRP Goat Anti-Rabbit IgG (H+L) (ABIN1684268 and ABIN3020597) at 1:10000 dilution. Lysates/proteins: 25 µg per lane. Blocking buffer: 3% nonfat dry milk in TBST. Detection: ECL Basic Kit (RM00020). Exposure time: 30s.



Immunohistochemistry

Image 3. Immunohistochemistry of paraffin-embedded rat lung using Casein Kinase 2 beta (Casein Kinase 2 beta (CSNK2B)) Rabbit pAb at dilution of 1:100 (40x lens). Perform high pressure antigen retrieval with 10 mM citrate buffer pH 6.0 before commencing with IHC staining protocol.

Please check the [product details page](#) for more images. Overall 4 images are available for ABIN7266105.