

Datasheet for ABIN7266106

anti-CRADD antibody**2** Images[Go to Product page](#)

Overview

Quantity:	100 µL
Target:	CRADD
Reactivity:	Human
Host:	Rabbit
Clonality:	Monoclonal
Conjugate:	This CRADD antibody is un-conjugated
Application:	Western Blotting (WB), Immunofluorescence (IF)

Product Details

Purpose:	RAIDD/CRADD Rabbit mAb
Immunogen:	A synthesized peptide derived from human RAIDD/CRADD
Isotype:	IgG
Cross-Reactivity:	Human, Rat
Characteristics:	Monoclonal Antibodies
Purification:	Affinity purification

Target Details

Target:	CRADD
Alternative Name:	CRADD (CRADD Products)
Background:	This gene encodes a protein containing a death domain (DD) motif. This protein recruits

Target Details

caspace 2/ICH1 to the cell death signal transduction complex, which includes tumor necrosis factor receptor 1 (TNFR1A) and RIPK1/RIP kinase, and acts in promoting apoptosis. A mutation in this gene was associated with mental retardation. A related pseudogene is found on chromosome 3. Alternative splicing results in multiple transcript variants. [provided by RefSeq, Feb 2016],MRT34, RAIDD,Apoptosis,Apoptosis_Mitochondrial Control of Apoptosis,Cancer,Cell Biology & Developmental Biology,Death Receptor Signaling Pathway,Invasion and Metastasis,CRADD

Molecular Weight: 23kDa

Gene ID: 8738

UniProt: [P78560](#)

Pathways: [Apoptosis](#), [Caspase Cascade in Apoptosis](#), [Positive Regulation of Endopeptidase Activity](#)

Application Details

Application Notes: WB,1:500 - 1:2000,IF,1:50 - 1:200

Restrictions: For Research Use only

Handling

Format: Liquid

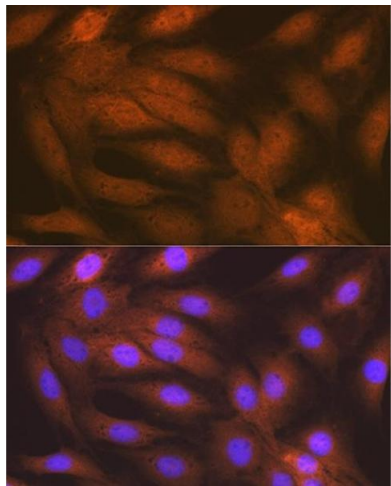
Buffer: PBS with 0.02 % sodium azide,0.05 % BSA,50 % glycerol, pH 7.3.

Preservative: Sodium azide

Precaution of Use: This product contains Sodium azide: a POISONOUS AND HAZARDOUS SUBSTANCE which should be handled by trained staff only.

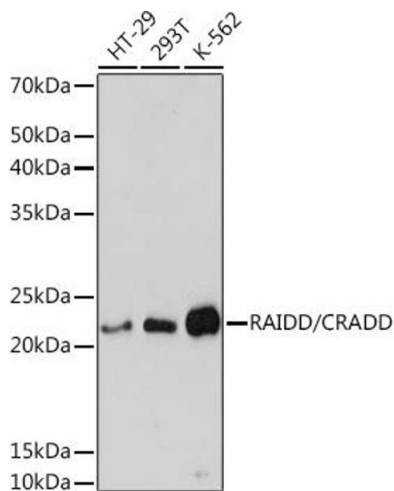
Storage: -20 °C

Storage Comment: Store at -20°C. Avoid freeze / thaw cycles.



Immunofluorescence

Image 1. Immunofluorescence analysis of C6 cells using RAIDD/CRADD Rabbit mAb (ABIN7266106) at dilution of 1:100 (40x lens). Blue: DAPI for nuclear staining.



Western Blotting

Image 2. Western blot analysis of extracts of various cell lines, using RAIDD/CRADD Rabbit mAb (ABIN7266106) at 1:3000 dilution. Secondary antibody: HRP Goat Anti-Rabbit IgG (H+L) (ABIN1684268 and ABIN3020597) at 1:10000 dilution. Lysates/proteins: 25 µg per lane. Blocking buffer: 3 % nonfat dry milk in TBST. Detection: ECL Basic Kit (RM00020). Exposure time: 30s.