

Datasheet for ABIN7266125

anti-CARD11 antibody

5 Images

[Go to Product page](#)

Overview

Quantity:	100 µL
Target:	CARD11
Reactivity:	Human
Host:	Rabbit
Clonality:	Monoclonal
Conjugate:	This CARD11 antibody is un-conjugated
Application:	Western Blotting (WB), Immunohistochemistry (IHC), Immunofluorescence (IF)

Product Details

Purpose:	CARD11 Rabbit mAb
Immunogen:	A synthesized peptide derived from human CARD11
Isotype:	IgG
Cross-Reactivity:	Human, Mouse, Rat
Characteristics:	Monoclonal Antibodies
Purification:	Affinity purification

Target Details

Target:	CARD11
Alternative Name:	CARD11 (CARD11 Products)
Background:	The protein encoded by this gene belongs to the membrane-associated guanylate kinase

Target Details

(MAGUK) family, a class of proteins that functions as molecular scaffolds for the assembly of multiprotein complexes at specialized regions of the plasma membrane. This protein is also a member of the CARD protein family, which is defined by carrying a characteristic caspase-associated recruitment domain (CARD). This protein has a domain structure similar to that of CARD14 protein. The CARD domains of both proteins have been shown to specifically interact with BCL10, a protein known to function as a positive regulator of cell apoptosis and NF-kappaB activation. When expressed in cells, this protein activated NF-kappaB and induced the phosphorylation of BCL10. [provided by RefSeq, Jul 2008],BENTA, BIMP3, CARMA1, IMD11, PPBL,Apoptosis,Apoptosis_Caspases,B Cell Receptor Signaling Pathway,Cancer,Cell Biology & Developmental Biology,Epigenetics & Nuclear Signaling,Immunology & Inflammation,Signal Transduction,T Cell Receptor Signaling Pathway,CARD11

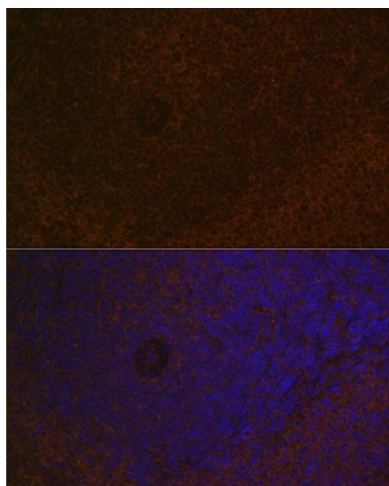
Molecular Weight:	133kDa
Gene ID:	84433
UniProt:	Q9BXL7
Pathways:	TCR Signaling , Fc-epsilon Receptor Signaling Pathway , BCR Signaling

Application Details

Application Notes:	WB,1:500 - 1:2000,IHC,1:50 - 1:200,IF,1:50 - 1:200
Restrictions:	For Research Use only

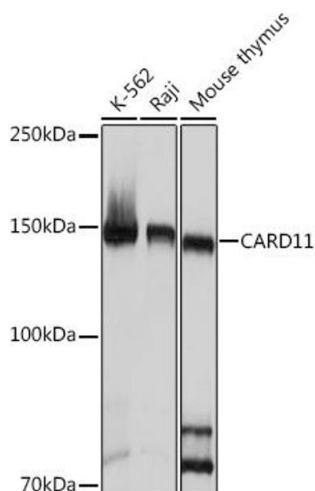
Handling

Format:	Liquid
Buffer:	PBS with 0.02 % sodium azide,0.05 % BSA,50 % glycerol, pH 7.3.
Preservative:	Sodium azide
Precaution of Use:	This product contains Sodium azide: a POISONOUS AND HAZARDOUS SUBSTANCE which should be handled by trained staff only.
Storage:	-20 °C
Storage Comment:	Store at -20°C. Avoid freeze / thaw cycles.



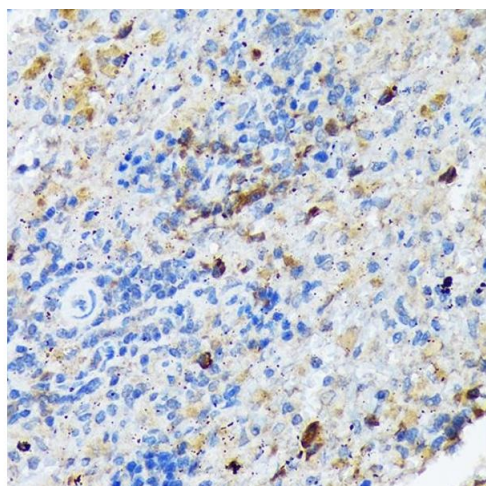
Immunofluorescence

Image 1. Immunofluorescence analysis of rat spleen using C Rabbit mAb (ABIN7266125) at dilution of 1:100 (40x lens). Blue: DAPI for nuclear staining.



Western Blotting

Image 2. Western blot analysis of extracts of various cell lines, using C Rabbit mAb (ABIN7266125) at 1:1000 dilution. Secondary antibody: HRP Goat Anti-Rabbit IgG (H+L) (ABIN1684268 and ABIN3020597) at 1:10000 dilution. Lysates/proteins: 25 µg per lane. Blocking buffer: 3 % nonfat dry milk in TBST. Detection: ECL Basic Kit (RM00020). Exposure time: 1 s.



Immunohistochemistry

Image 3. Immunohistochemistry of paraffin-embedded rat spleen using C Rabbit mAb (ABIN7266125) at dilution of 1:100 (40x lens). Perform microwave antigen retrieval with 10 mM Tris/EDTA buffer pH 9.0 before commencing with IHC staining protocol.

Please check the [product details page](#) for more images. Overall 5 images are available for ABIN7266125.