



[Go to Product page](#)

Datasheet for ABIN7266133  
**anti-CTNNA1 antibody**

2 Images

Overview

Quantity:	100 µL
Target:	CTNNA1
Reactivity:	Human
Host:	Rabbit
Clonality:	Monoclonal
Conjugate:	This CTNNA1 antibody is un-conjugated
Application:	Western Blotting (WB)

Product Details

Purpose:	[KO Validated] α-Catenin Rabbit mAb
Immunogen:	A synthesized peptide derived from human alpha-Catenin.
Isotype:	IgG
Cross-Reactivity:	Human, Mouse, Rat
Characteristics:	Monoclonal Antibodies
Purification:	Affinity purification
Grade:	KO Validated

Target Details

Target:	CTNNA1
Alternative Name:	CTNNA1 ( <a href="#">CTNNA1 Products</a> )

## Target Details

---

**Background:** This gene encodes a member of the catenin family of proteins that play an important role in cell adhesion process by connecting cadherins located on the plasma membrane to the actin filaments inside the cell. The encoded mechanosensing protein contains three vinculin homology domains and undergoes conformational changes in response to cytoskeletal tension, resulting in the reconfiguration of cadherin-actin filament connections. Certain mutations in this gene cause butterfly-shaped pigment dystrophy. [provided by RefSeq, May 2016],CAP102,MDPT2,Catenin alpha 1,CTNNA1,Cancer,Cell Adhesion,Cell Adhesion\_Cadherins,Cell Adhesion\_Tight Junctions,Cell Biology & Developmental Biology,Cytoskeleton,Cytoskeleton\_Microfilaments,Epigenetics & Nuclear Signaling,Invasion and Metastasis,RNA Binding,Signal Transduction,Stem Cells,Wnt/ $\beta$ -Catenin Signaling Pathway,CTNNA1

**Molecular Weight:** 100kDa

**Gene ID:** 1495

**UniProt:** [P35221](#)

**Pathways:** [Regulation of Muscle Cell Differentiation](#), [Cell-Cell Junction Organization](#), [Maintenance of Protein Location](#)

## Application Details

---

**Application Notes:** WB,1:500 - 1:2000

**Restrictions:** For Research Use only

## Handling

---

**Format:** Liquid

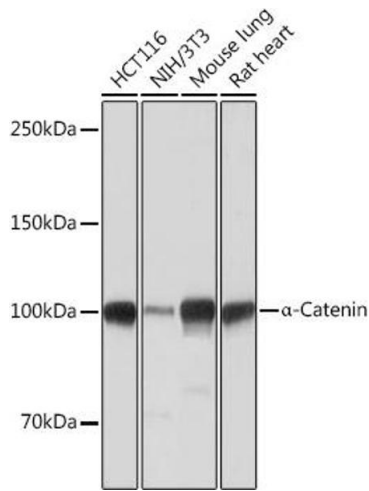
**Buffer:** PBS with 0.02 % sodium azide,0.05 % BSA,50 % glycerol, pH 7.3.

**Preservative:** Sodium azide

**Precaution of Use:** This product contains Sodium azide: a POISONOUS AND HAZARDOUS SUBSTANCE which should be handled by trained staff only.

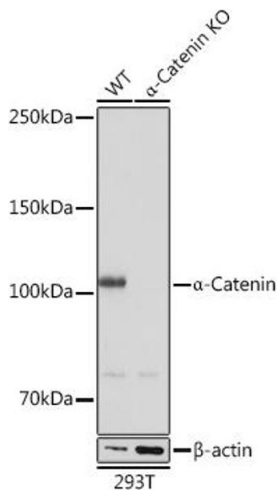
**Storage:** -20 °C

**Storage Comment:** Store at -20°C. Avoid freeze / thaw cycles.



### Western Blotting

**Image 1.** Western blot analysis of extracts of various cell lines, using α-Catenin antibody (ABIN7266133) at 1:1000 dilution. Secondary antibody: HRP Goat Anti-Rabbit IgG (H+L) (ABIN1684268 and ABIN3020597) at 1:10000 dilution. Lysates/proteins: 25 µg per lane. Blocking buffer: 3 % nonfat dry milk in TBST. Detection: ECL Basic Kit (RM00020). Exposure time: 1s.



### Western Blotting

**Image 2.** Western blot analysis of extracts from wild type (WT) and α-Catenin knockout (KO) 293T cells, using α-Catenin antibody (ABIN7266133) at 1:1000 dilution. Secondary antibody: HRP Goat Anti-Rabbit IgG (H+L) (ABIN1684268 and ABIN3020597) at 1:10000 dilution. Lysates/proteins: 25 µg per lane. Blocking buffer: 3 % nonfat dry milk in TBST. Detection: ECL Basic Kit (RM00020). Exposure time: 1s.