

Datasheet for ABIN7266152  
**anti-CDX2 antibody**



[Go to Product page](#)

7 Images

## Overview

Quantity:	100 µL
Target:	CDX2
Reactivity:	Human
Host:	Rabbit
Clonality:	Monoclonal
Conjugate:	This CDX2 antibody is un-conjugated
Application:	Western Blotting (WB), Immunohistochemistry (IHC), Immunofluorescence (IF), Immunoprecipitation (IP)

## Product Details

Purpose:	CDX2 Rabbit mAb
Immunogen:	A synthesized peptide derived from human CDX2
Isotype:	IgG
Cross-Reactivity:	Human, Mouse, Rat
Characteristics:	Monoclonal Antibodies
Purification:	Affinity purification

## Target Details

Target:	CDX2
Alternative Name:	CDX2 ( <a href="#">CDX2 Products</a> )

## Target Details

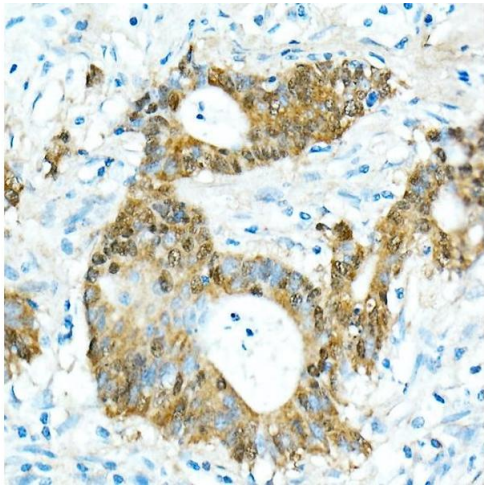
Background:	This gene is a member of the caudal-related homeobox transcription factor gene family. The encoded protein is a major regulator of intestine-specific genes involved in cell growth and differentiation. This protein also plays a role in early embryonic development of the intestinal tract. Aberrant expression of this gene is associated with intestinal inflammation and tumorigenesis. [provided by RefSeq, Jan 2012],CDX2,CDX-3,CDX2/AS,CDX3,Cell Biology & Developmental Biology,Epigenetics & Nuclear Signaling,Stem Cells,Transcription Factors,CDX2
Molecular Weight:	40kDa
Gene ID:	1045
UniProt:	<a href="#">Q99626</a>
Pathways:	<a href="#">Peptide Hormone Metabolism</a> , <a href="#">Stem Cell Maintenance</a>

## Application Details

Application Notes:	WB,1:500 - 1:2000,IHC,1:50 - 1:200,IF,1:50 - 1:200,IP,1:50 - 1:200
Restrictions:	For Research Use only

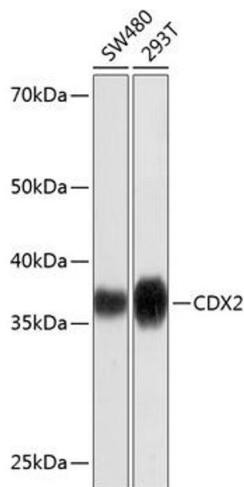
## Handling

Format:	Liquid
Buffer:	PBS with 0.02 % sodium azide,0.05 % BSA,50 % glycerol, pH 7.3.
Preservative:	Sodium azide
Precaution of Use:	This product contains Sodium azide: a POISONOUS AND HAZARDOUS SUBSTANCE which should be handled by trained staff only.
Storage:	-20 °C
Storage Comment:	Store at -20°C. Avoid freeze / thaw cycles.



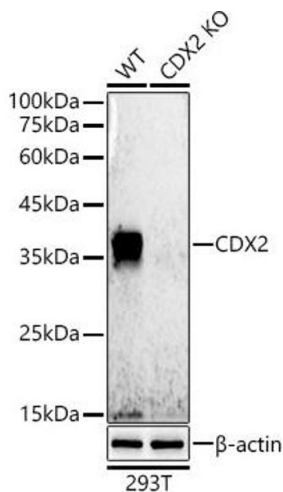
### Immunohistochemistry

**Image 1.** Immunohistochemistry of paraffin-embedded Human colon carcinoma using CDX2 antibody at dilution of 1:300 (40x lens). Perform microwave antigen retrieval with 10 mM PBS buffer pH 7.2 before commencing with IHC staining protocol.



### Western Blotting

**Image 2.** Western blot analysis of extracts of various cell lines, using CDX2 antibody at 1:1000 dilution. Secondary antibody: HRP Goat Anti-Rabbit IgG (H+L) (ABIN1684268 and ABIN3020597) at 1:10000 dilution. Lysates/proteins: 25 µg per lane. Blocking buffer: 3 % nonfat dry milk in TBST. Detection: ECL Basic Kit (RM00020). Exposure time: 3 min.



### Western Blotting

**Image 3.** Western blot analysis of extracts from wild type (WT) and CDX2 knockout (KO) 293T cells, using CDX2 antibody at 1:500 dilution. Secondary antibody: HRP Goat Anti-Rabbit IgG (H+L) (ABIN1684268 and ABIN3020597) at 1:10000 dilution. Lysates/proteins: 25 µg per lane. Blocking buffer: 3 % nonfat dry milk in TBST. Detection: ECL Basic Kit (RM00020). Exposure time: 30s.

Please check the [product details page](#) for more images. Overall 7 images are available for ABIN7266152.