



[Go to Product page](#)

Datasheet for ABIN7266155
anti-Caveolin 2 antibody

4 Images

Overview

Quantity:	100 µL
Target:	Caveolin 2 (CAV2)
Reactivity:	Human
Host:	Rabbit
Clonality:	Monoclonal
Conjugate:	This Caveolin 2 antibody is un-conjugated
Application:	Western Blotting (WB), Immunohistochemistry (IHC), Immunoprecipitation (IP)

Product Details

Purpose:	Caveolin-2 Rabbit mAb
Immunogen:	A synthesized peptide derived from human Caveolin-2
Isotype:	IgG
Cross-Reactivity:	Human, Mouse
Characteristics:	Monoclonal Antibodies
Purification:	Affinity purification

Target Details

Target:	Caveolin 2 (CAV2)
Alternative Name:	CAV2 (CAV2 Products)
Background:	The protein encoded by this gene is a major component of the inner surface of caveolae, small

Target Details

invaginations of the plasma membrane, and is involved in essential cellular functions, including signal transduction, lipid metabolism, cellular growth control and apoptosis. This protein may function as a tumor suppressor. This gene and related family member (CAV1) are located next to each other on chromosome 7, and express colocalizing proteins that form a stable hetero-oligomeric complex. Alternatively spliced transcript variants encoding different isoforms have been identified for this gene. Additional isoforms resulting from the use of alternate in-frame translation initiation codons have also been described, and shown to have preferential localization in the cell (PMID:11238462). [provided by RefSeq, May 2011],CAV,Apoptosis,Cardiovascular,Cell Adhesion,Cell Biology & Developmental Biology,Endocrine & Metabolism,ErbB-HER Signaling Pathway,Insulin Receptor Signaling Pathway,Signal Transduction,CAV2

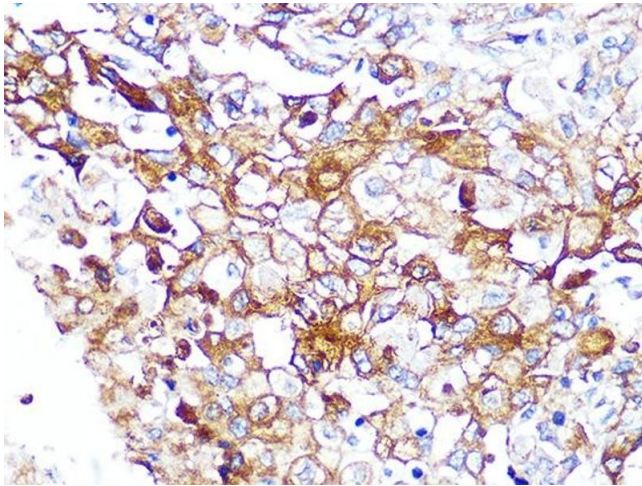
Molecular Weight:	18kDa
Gene ID:	858
UniProt:	P51636
Pathways:	Regulation of G-Protein Coupled Receptor Protein Signaling , Skeletal Muscle Fiber Development

Application Details

Application Notes:	WB,1:500 - 1:2000,IHC,1:50 - 1:200,IP,1:50 - 1:200
Restrictions:	For Research Use only

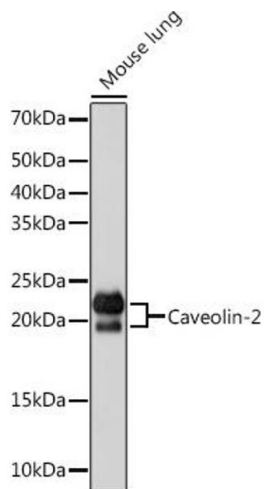
Handling

Format:	Liquid
Buffer:	PBS with 0.02 % sodium azide,0.05 % BSA,50 % glycerol, pH 7.3.
Preservative:	Sodium azide
Precaution of Use:	This product contains Sodium azide: a POISONOUS AND HAZARDOUS SUBSTANCE which should be handled by trained staff only.
Storage:	-20 °C
Storage Comment:	Store at -20°C. Avoid freeze / thaw cycles.



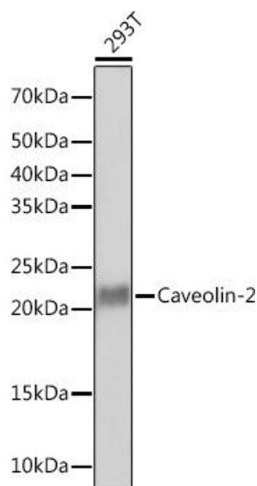
Immunohistochemistry

Image 1. Immunohistochemistry of paraffin-embedded human esophageal cancer using Caveolin-2 Rabbit mAb (ABIN7266155) at dilution of 1:100 (40x lens). Perform microwave antigen retrieval with 10 mM PBS buffer pH 7.2 before commencing with IHC staining protocol.



Western Blotting

Image 2. Western blot analysis of extracts of Mouse lung, using Caveolin-2 Rabbit mAb (ABIN7266155) at 1:1000 dilution. Secondary antibody: HRP Goat Anti-Rabbit IgG (H+L) (ABIN1684268 and ABIN3020597) at 1:10000 dilution. Lysates/proteins: 25 µg per lane. Blocking buffer: 3 % nonfat dry milk in TBST. Detection: ECL Basic Kit (RM00020). Exposure time: 1s.



Western Blotting

Image 3. Western blot analysis of extracts of 293T cells, using Caveolin-2 Rabbit mAb (ABIN7266155) at 1:1000 dilution. Secondary antibody: HRP Goat Anti-Rabbit IgG (H+L) (ABIN1684268 and ABIN3020597) at 1:10000 dilution. Lysates/proteins: 25 µg per lane. Blocking buffer: 3 % nonfat dry milk in TBST. Detection: ECL Basic Kit (RM00020). Exposure time: 90s.

Please check the [product details page](#) for more images. Overall 4 images are available for ABIN7266155.