

Datasheet for ABIN7266157
anti-Caveolin 3 antibody

3 Images

[Go to Product page](#)

Overview

Quantity:	100 µL
Target:	Caveolin 3 (CAV3)
Reactivity:	Human
Host:	Rabbit
Clonality:	Monoclonal
Conjugate:	This Caveolin 3 antibody is un-conjugated
Application:	Western Blotting (WB), Immunohistochemistry (IHC)

Product Details

Purpose:	Caveolin-3 Rabbit mAb
Immunogen:	A synthesized peptide derived from human Caveolin-3
Isotype:	IgG
Cross-Reactivity:	Human, Mouse, Rat
Characteristics:	Monoclonal Antibodies
Purification:	Affinity purification

Target Details

Target:	Caveolin 3 (CAV3)
Alternative Name:	CAV3 (CAV3 Products)
Background:	This gene encodes a caveolin family member, which functions as a component of the caveolae

Target Details

plasma membranes found in most cell types. Caveolin proteins are proposed to be scaffolding proteins for organizing and concentrating certain caveolin-interacting molecules. Mutations identified in this gene lead to interference with protein oligomerization or intra-cellular routing, disrupting caveolae formation and resulting in Limb-Girdle muscular dystrophy type-1C (LGMD-1C), hyperCKemia or rippling muscle disease (RMD). Alternative splicing has been identified for this locus, with inclusion or exclusion of a differentially spliced intron. In addition, transcripts utilize multiple polyA sites and contain two potential translation initiation sites. [provided by RefSeq, Jul 2008],LGMD1C, LQT9, VIP-21, VIP21,Endocrine & Metabolism,ErbB-HER Signaling Pathway,Insulin Receptor Signaling Pathway,Signal Transduction,CAV3

Molecular Weight: 17kDa

Gene ID: 859

UniProt: [P56539](#)

Pathways: [Carbohydrate Homeostasis](#), [Regulation of Muscle Cell Differentiation](#), [Regulation of Cell Size](#), [Skeletal Muscle Fiber Development](#), [Negative Regulation of Transporter Activity](#)

Application Details

Application Notes: WB,1:500 - 1:2000,IHC,1:50 - 1:200

Restrictions: For Research Use only

Handling

Format: Liquid

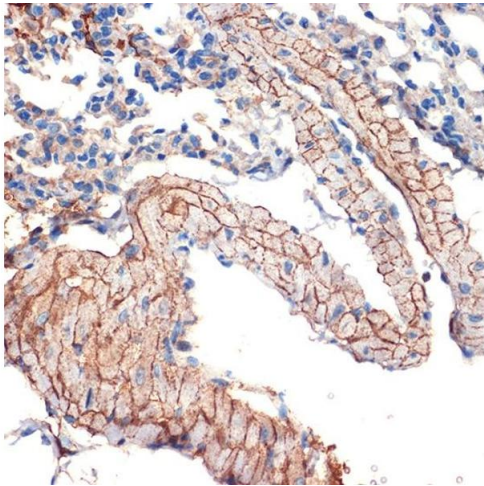
Buffer: PBS with 0.02 % sodium azide,0.05 % BSA,50 % glycerol, pH 7.3.

Preservative: Sodium azide

Precaution of Use: This product contains Sodium azide: a POISONOUS AND HAZARDOUS SUBSTANCE which should be handled by trained staff only.

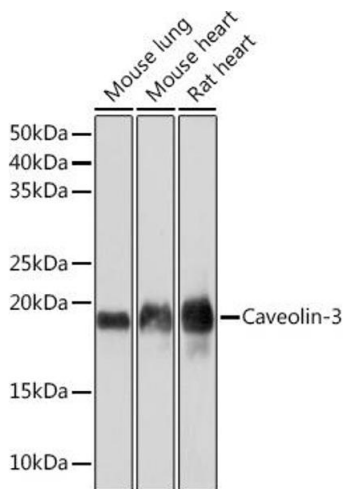
Storage: -20 °C

Storage Comment: Store at -20°C. Avoid freeze / thaw cycles.



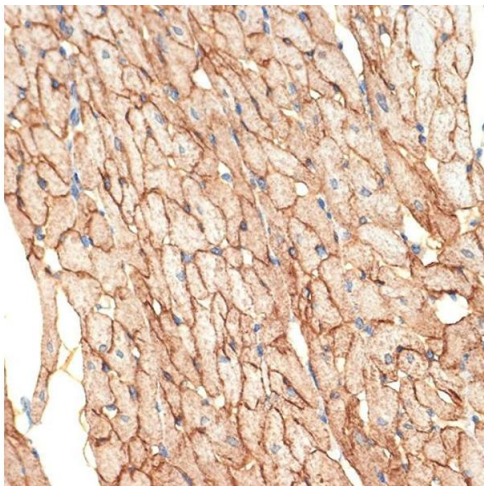
Immunohistochemistry

Image 1. Immunohistochemistry of paraffin-embedded mouse lung using Caveolin-3 Rabbit mAb (ABIN7266157) at dilution of 1:100 (40x lens). Perform microwave antigen retrieval with 10 mM Tris/EDTA buffer pH 9.0 before commencing with IHC staining protocol.



Western Blotting

Image 2. Western blot analysis of extracts of various cell lines, using Caveolin-3 Rabbit mAb (ABIN7266157) at 1:1000 dilution. Secondary antibody: HRP Goat Anti-Rabbit IgG (H+L) (ABIN1684268 and ABIN3020597) at 1:10000 dilution. Lysates/proteins: 25 µg per lane. Blocking buffer: 3 % nonfat dry milk in TBST. Detection: ECL Basic Kit (RM00020). Exposure time: 10s.



Immunohistochemistry

Image 3. Immunohistochemistry of paraffin-embedded rat heart using Caveolin-3 Rabbit mAb (ABIN7266157) at dilution of 1:100 (40x lens). Perform microwave antigen retrieval with 10 mM Tris/EDTA buffer pH 9.0 before commencing with IHC staining protocol.